

Datasheet for ABIN7138726
anti-KAT5 antibody (pSer90)



[Go to Product page](#)

1 Image

Overview

Quantity:	100 µL
Target:	KAT5
Binding Specificity:	pSer90
Reactivity:	Human
Host:	Rabbit
Clonality:	Polyclonal
Conjugate:	This KAT5 antibody is un-conjugated
Application:	ELISA, Immunohistochemistry (IHC)

Product Details

Immunogen:	Peptide sequence around phosphorylation site of Serine 90(P-G-S(p)-P-E) derived from Human Tip60.
Isotype:	IgG
Cross-Reactivity:	Human, Mouse, Rat
Purification:	Antibodies were produced by immunizing rabbits with synthetic phosphopeptide and KLH conjugates. Antibodies were purified by affinity-chromatography using epitope-specific phosphopeptide. Non-phospho specific antibodies were removed by chromatography using

Target Details

Target:	KAT5
Alternative Name:	KAT5 (KAT5 Products)

Target Details

Background:	<p>Background:</p> <p>The protein encoded by this gene belongs to the MYST family of histone acetyl transferases (HATs) and was originally isolated as an HIV-1 TAT-interactive protein. HATs play important roles in regulating chromatin remodeling, transcription and other nuclear processes by acetylating histone and nonhistone proteins. This protein is a histone acetylase that has a role in DNA repair and apoptosis and is thought to play an important role in signal transduction. Alternative splicing of this gene results in multiple transcript variants.</p> <p>Kamine J., Virology 216:357-366(1996).</p> <p>Sheridan A.M., Mol. Cell. Biol. 21:4470-4481(2001).</p> <p>Legube G., Gene 310:161-168(2003).</p> <p>Aliases: 60 kDa Tat interactive protein antibody, 60 kDa Tat-interactive protein antibody, cPLA(2) interacting protein antibody, cPLA(2)-interacting protein antibody, cPLA2 antibody, cPLA2 interacting protein antibody, ESA1 antibody, Histone acetyltransferase HTATIP antibody, Histone acetyltransferase KAT5 antibody, HIV 1 Tat interactive protein antibody, HIV 1 Tat interactive protein, 60 kDa antibody, HIV-1 Tat interactive protein antibody, HTATIP antibody, HTATIP1 antibody, K(lysine) acetyltransferase 5 antibody, K-acetyltransferase 5 antibody, KAT5 antibody, KAT5_HUMAN antibody, Lysine acetyltransferase 5 antibody, PLIP antibody, Tat interacting protein, 60 kDa antibody, TIP antibody, Tip60 antibody</p>
-------------	--

UniProt:	Q92993
----------	------------------------

Pathways:	Intracellular Steroid Hormone Receptor Signaling Pathway
-----------	--

Application Details

Application Notes:	IHC:1:50-1:100,
Restrictions:	For Research Use only

Handling

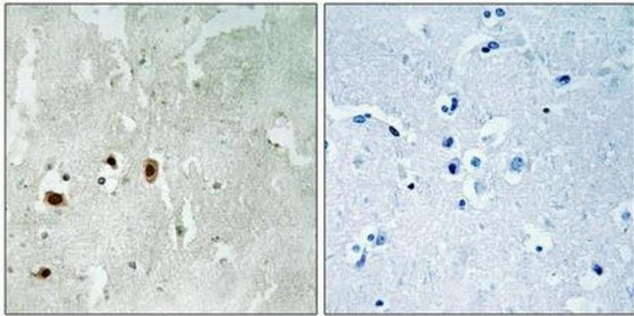
Format:	Liquid
Buffer:	Rabbit IgG in phosphate buffered saline (without Mg ²⁺ and Ca ²⁺), pH 7.4, 150 mM NaCl, 0.02 % sodium azide and 50 % glycerol.
Preservative:	Sodium azide
Precaution of Use:	This product contains Sodium azide: a POISONOUS AND HAZARDOUS SUBSTANCE which should be handled by trained staff only.

Handling

Storage: -20 °C, -80 °C

Storage Comment: Upon receipt, store at -20°C or -80°C. Avoid repeated freeze.

Images



Immunohistochemistry

Image 1. Immunohistochemical analysis of paraffin-embedded human brain tissue using Tip60 (Phospho-Ser90) antibody (left) or the same antibody preincubated with blocking peptide (right).