

Datasheet for ABIN7138728
anti-BAD antibody (pSer91, pSer128)



[Go to Product page](#)

2 Images

Overview

Quantity:	100 µL
Target:	BAD
Binding Specificity:	pSer91, pSer128
Reactivity:	Human
Host:	Rabbit
Clonality:	Polyclonal
Conjugate:	This BAD antibody is un-conjugated
Application:	ELISA, Western Blotting (WB), Immunohistochemistry (IHC)

Product Details

Immunogen:	Peptide sequence around phosphorylation site of Serine 91 (E-P-S(p)-P-F) derived from Human BAD or Serine 128 (E-P-S(p)-P-F) derived from Mouse BAD.
Isotype:	IgG
Cross-Reactivity:	Human, Mouse, Rat
Purification:	Antibodies were produced by immunizing rabbits with synthetic phosphopeptide and KLH conjugates. Antibodies were purified by affinity-chromatography using epitope-specific phosphopeptide. Non-phospho specific antibodies were removed by chromatography using

Target Details

Target:	BAD
Alternative Name:	BAD (BAD Products)

Target Details

Background:

Background:

The protein encoded by BAD gene is a member of the BCL-2 family. BCL-2 family members are known to be regulators of programmed cell death. This protein positively regulates cell apoptosis by forming heterodimers with BCL-xL and BCL-2, and reversing their death repressor activity. Proapoptotic activity of this protein is regulated through its phosphorylation. Protein kinases AKT and MAP kinase, as well as protein phosphatase calcineurin were found to be involved in the regulation of this protein. Alternative splicing of this gene results in two transcript variants which encode the same isoform.

Wang H.-G., Cell 87:629-638(1996).

Ottilie S., J. Biol. Chem. 272:30866-30872(1997).

The MGC Project Team, Genome Res. 14:2121-2127(2004).

Aliases: AI325008 antibody, BAD antibody, BAD_HUMAN antibody, BBC 2 antibody, BBC2 antibody, BBC6 antibody, Bcl 2 Antagonist of Cell Death antibody, Bcl 2 Binding Component 6 antibody, BCL X / BCL 2 Binding Protein antibody, BCL X Binding Protein antibody, Bcl XL/Bcl 2 Associated Death Promoter antibody, Bcl-2-binding component 6 antibody, Bcl-2-like protein 8 antibody, Bcl-XL/Bcl-2-associated death promoter antibody, Bcl2 antagonist of cell death antibody, BCL2 antagonist of cell death protein antibody, BCL2 associated agonist of cell death antibody, Bcl2 Associated Death Promoter antibody, BCL2 binding component 6 antibody, BCL2 binding protein antibody, Bcl2 Like 8 Protein antibody, Bcl2-L-8 antibody, BCL2L8 antibody, Proapoptotic BH3 Only Protein antibody

UniProt:

[Q92934](#)

Pathways:

[MAPK Signaling](#), [PI3K-Akt Signaling](#), [RTK Signaling](#), [Apoptosis](#), [Fc-epsilon Receptor Signaling Pathway](#), [Positive Regulation of Peptide Hormone Secretion](#), [Carbohydrate Homeostasis](#), [Positive Regulation of Endopeptidase Activity](#), [Regulation of Carbohydrate Metabolic Process](#), [Hepatitis C](#), [CXCR4-mediated Signaling Events](#)

Application Details

Application Notes:

WB:1:500-1:1000, IHC:1:50-1:100,

Restrictions:

For Research Use only

Handling

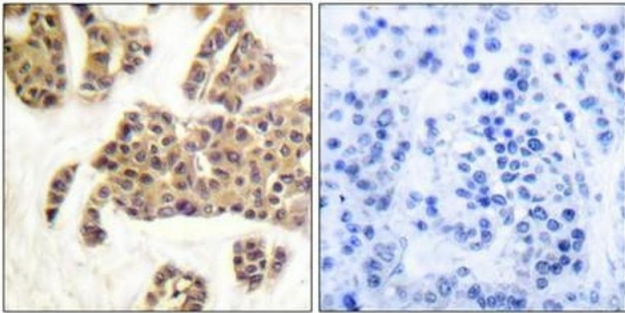
Format:

Liquid

Handling

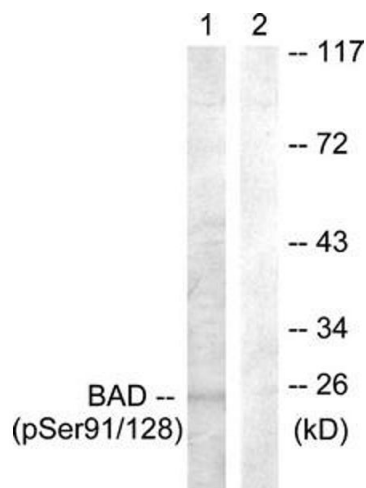
Buffer:	Rabbit IgG in phosphate buffered saline (without Mg ²⁺ and Ca ²⁺), pH 7.4, 150 mM NaCl, 0.02 % sodium azide and 50 % glycerol.
Preservative:	Sodium azide
Precaution of Use:	This product contains Sodium azide: a POISONOUS AND HAZARDOUS SUBSTANCE which should be handled by trained staff only.
Storage:	-20 °C,-80 °C
Storage Comment:	Upon receipt, store at -20°C or -80°C. Avoid repeated freeze.

Images



Immunohistochemistry

Image 1. Immunohistochemical analysis of paraffin-embedded human breast carcinoma tissue using BAD (Phospho-Ser91/128) antibody (left) or the same antibody preincubated with blocking peptide (right).



Western Blotting

Image 2. Western blot analysis of extracts from COS7 cells treated with TNF- α using BAD (Phospho-Ser91/128) Antibody. The lane on the right is treated with the antigen-specific peptide.