

Datasheet for ABIN7138730
anti-RASGRF1 antibody (pSer916)[Go to Product page](#)

1 Image

Overview

Quantity:	100 µL
Target:	RASGRF1
Binding Specificity:	pSer916
Reactivity:	Human
Host:	Rabbit
Clonality:	Polyclonal
Conjugate:	This RASGRF1 antibody is un-conjugated
Application:	Immunohistochemistry (IHC), ELISA

Product Details

Immunogen:	Peptide sequence around phosphorylation site of Serine 916(N-E-G(p)-T P) derived from Human Ras-GRF1.
Isotype:	IgG
Cross-Reactivity:	Mouse, Rat
Purification:	Antibodies were produced by immunizing rabbits with synthetic phosphopeptide and KLH conjugates. Antibodies were purified by affinity-chromatography using epitope-specific phosphopeptide. Non-phospho specific antibodies were removed by chromatography using

Target Details

Target:	RASGRF1
Alternative Name:	RASGRF1 (RASGRF1 Products)

Target Details

Background:

Background:

Ras activity is regulated by GAP (GTPase activating proteins) and GEFs (guanine nucleotide exchange factors). Ras-GRF1 (also known as CDC25Mm) is neuronal RasGEF and is regulated by heterotrimeric G proteins and calcium influx. Binding to calmodulin and phosphorylation stimulate Ras-GRF1 activity. Multiple PKA phosphorylation sites on Ras-GRF have been identified. Phosphorylation on the two major sites, Ser54 and Ser822, inhibits Ras-GRF activity. Carbachol (a muscarinic agonist)-induced phosphorylation on Ser916 is essential but not sufficient for maximal Ras-GRF activity.

Huabin Yang, J. Biol. Chem., Apr 2003, 278: 13278 - 13285.

Huabin Yang, Mol. Biol. Cell, May 2006, 17: 2177 - 2189.

Raymond R. Mattingly, J. Biol. Chem., Dec 1999, 274: 37379.

Tie-Nian Zhu, J. Biol. Chem., May 2007, 282: 14816 - 14826.

Aliases: CDC25 antibody, CDC25L antibody, GNRP antibody, GRF1 antibody, GRF55 antibody, Guanine nucleotide exchange factor antibody, Guanine nucleotide releasing factor 55 kD antibody, Guanine nucleotide releasing protein antibody, guanine nucleotide-releasing factor 1 antibody, Guanine nucleotide-releasing protein antibody, H GRF55 antibody, HGRF55 antibody, PP13187 antibody, Ras protein specific guanine nucleotide releasing factor 1 antibody, Ras specific guanine nucleotide releasing factor antibody, Ras specific guanine nucleotide releasing factor CDC25 homolog antibody, Ras specific nucleotide exchange factor CDC25 antibody, Ras-GRF1 antibody, Ras-specific guanine nucleotide-releasing factor 1 antibody, Ras-specific nucleotide exchange factor CDC25 antibody, RASGRF1 antibody, RGRF1_HUMAN antibody

UniProt:

[Q13972](#)

Pathways:

[RTK Signaling](#), [Cell Division Cycle](#), [M Phase](#)

Application Details

Application Notes:

IHC:1:50-1:100,

Restrictions:

For Research Use only

Handling

Format:

Liquid

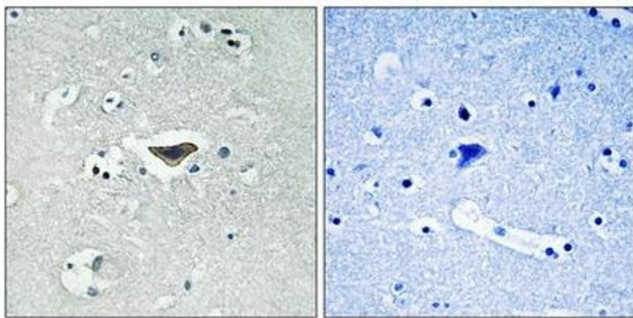
Buffer:

Rabbit IgG in phosphate buffered saline (without Mg²⁺ and Ca²⁺), pH 7.4, 150 mM NaCl, 0.02 % sodium azide and 50 % glycerol.

Handling

Preservative:	Sodium azide
Precaution of Use:	This product contains Sodium azide: a POISONOUS AND HAZARDOUS SUBSTANCE which should be handled by trained staff only.
Storage:	-20 °C,-80 °C
Storage Comment:	Upon receipt, store at -20°C or -80°C. Avoid repeated freeze.

Images



Immunohistochemistry

Image 1. Immunohistochemical analysis of paraffin-embedded human brain tissue using Ras-GRF1 (Phospho-Ser916) antibody (left) or the same antibody preincubated with blocking peptide (right).