



[Go to Product page](#)

Datasheet for ABIN7138742
anti-PRKAR2B antibody (pSer113)

1 Image

Overview

Quantity:	100 µL
Target:	PRKAR2B
Binding Specificity:	pSer113
Reactivity:	Human
Host:	Rabbit
Clonality:	Polyclonal
Conjugate:	This PRKAR2B antibody is un-conjugated
Application:	Western Blotting (WB), ELISA

Product Details

Immunogen:	Peptide sequence around phosphorylation site of Serine113(R-R-A(p)-S-V) derived from Human PKA-R2beta.
Isotype:	IgG
Cross-Reactivity:	Human, Mouse, Rat
Purification:	Antibodies were produced by immunizing rabbits with synthetic phosphopeptide and KLH conjugates. Antibodies were purified by affinity-chromatography using epitope-specific phosphopeptide. Non-phospho specific antibodies were removed by chromatography using

Target Details

Target:	PRKAR2B
Alternative Name:	PRKAR2B (PRKAR2B Products)

Target Details

Background: Background: Regulatory subunit of the cAMP-dependent protein kinases involved in cAMP signaling in cells. Type II regulatory chains mediate membrane association by binding to anchoring proteins, including the MAP2 kinase. Levy F.O., Mol. Endocrinol. 2:1364-1373(1988). DeGiorgis J.A., J. Proteome Res. 4:306-315(2005). Han G., Proteomics 8:1346-1361(2008)

Aliases: AI451071 antibody, AW061005 antibody, cAMP dependent protein kinase type II beta regulatory chain antibody, cAMP dependent protein kinase type II beta regulatory subunit antibody, cAMP-dependent protein kinase type II-beta regulatory subunit antibody, H RG363E19.2 antibody, KAP3_HUMAN antibody, MGC116401 antibody, Pkarb2 antibody, PRKAR 2 antibody, PRKAR2 antibody, PRKAR2B antibody, Protein kinase cAMP dependent regulatory type II beta antibody, RATDNA antibody, RII beta antibody, RII(beta) antibody, RIIbeta antibody, WUGSC:H RG363E19.2 antibody

UniProt: [P31323](#)

Pathways: [Hedgehog Signaling](#), [EGFR Signaling Pathway](#), [Neurotrophin Signaling Pathway](#), [Myometrial Relaxation and Contraction](#), [M Phase](#), [G-protein mediated Events](#), [Interaction of EGFR with phospholipase C-gamma](#), [SARS-CoV-2 Protein Interactome](#), [The Global Phosphorylation Landscape of SARS-CoV-2 Infection](#)

Application Details

Application Notes: WB:1:500-1:1000,

Restrictions: For Research Use only

Handling

Format: Liquid

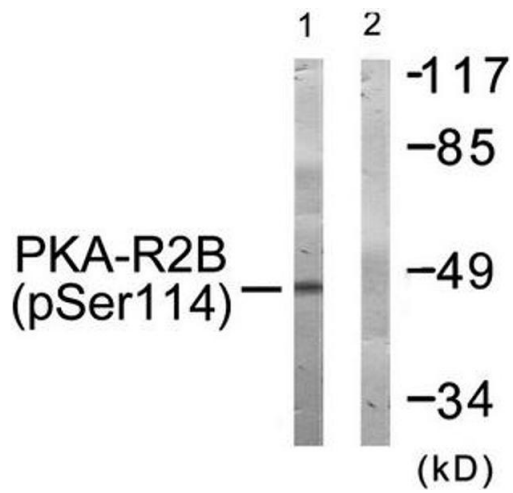
Buffer: Rabbit IgG in phosphate buffered saline (without Mg²⁺ and Ca²⁺), pH 7.4, 150 mM NaCl, 0.02 % sodium azide and 50 % glycerol.

Preservative: Sodium azide

Precaution of Use: This product contains Sodium azide: a POISONOUS AND HAZARDOUS SUBSTANCE which should be handled by trained staff only.

Storage: -20 °C, -80 °C

Storage Comment: Upon receipt, store at -20°C or -80°C. Avoid repeated freeze.



Western Blotting

Image 1. Western blot analysis of extracts from COS-7 cells treated with PMA using PKA-R2 β (Phospho-Ser114) Antibody. The lane on the right is treated with the antigen-specific peptide.