

Datasheet for ABIN7138748
anti-PIN1 antibody (pSer16)



[Go to Product page](#)

1 Image

Overview

Quantity:	100 µL
Target:	PIN1
Binding Specificity:	pSer16
Reactivity:	Human
Host:	Rabbit
Clonality:	Polyclonal
Conjugate:	This PIN1 antibody is un-conjugated
Application:	Western Blotting (WB), ELISA

Product Details

Immunogen:	Peptide sequence around phosphorylation site of serine16(R-M-S(p)-R-S) derived from Human Pin1 .
Isotype:	IgG
Cross-Reactivity:	Human, Mouse, Rat
Purification:	Antibodies were produced by immunizing rabbits with synthetic phosphopeptide and KLH conjugates. Antibodies were purified by affinity-chromatography using epitope-specific phosphopeptide. Non-phospho specific antibodies were removed by chromatography using

Target Details

Target:	PIN1
Alternative Name:	PIN1 (PIN1 Products)

Target Details

Background:	<p>Background:</p> <p>Essential PPlase that regulates mitosis presumably by interacting with NIMA and attenuating its mitosis-promoting activity. Displays a preference for an acidic residue N-terminal to the isomerized proline bond. Catalyzes pSer/Thr-Pro cis/trans isomerizations. Down-regulates kinase activity of BTK. Can transactivate multiple oncogenes and induce centrosome amplification, chromosome instability and cell transformation. Required for the efficient dephosphorylation and recycling of RAF1 after mitogen activation. Binds and targets PML and BCL6 for degradation in a phosphorylation-dependent manner.</p> <p>Lee YC, et al. (2013)J Cell Sci 126, 4862-72. Ando K, et al. (2013)Neurobiol Aging 34, 757-69. Nechama M, Lin CL, Richter JD (2013)Mol Cell Biol 33, 48-58.</p> <p>Aliases: DOD antibody, DODO, Drosophila, homolog of antibody, FLJ40239 antibody, FLJ77628 antibody, MGC10717 antibody, NIMA interacting 1 antibody, Peptidyl prolyl cis trans isomerase NIMA interacting 1 antibody, Peptidyl prolyl cis/trans isomerase NIMA interacting antibody, Peptidyl-prolyl cis-trans isomerase NIMA-interacting 1 antibody, Peptidyl-prolyl cis-trans isomerase pin1 antibody, Peptidylprolyl cis/trans isomerase NIMA interacting 1 antibody, Pin 1 antibody, Pin1 antibody, PIN1_HUMAN antibody, PPlase Pin1 antibody, Prolyl isomerase antibody, Protein (peptidylprolyl cis/trans isomerase) NIMA interacting 1 antibody, Protein NIMA interacting 1 antibody, Rotamase Pin1 antibody, UBL 5 antibody, UBL5 antibody</p>
-------------	---

UniProt: [Q13526](#)

Application Details

Application Notes:	WB:1:500-1:1000,
Restrictions:	For Research Use only

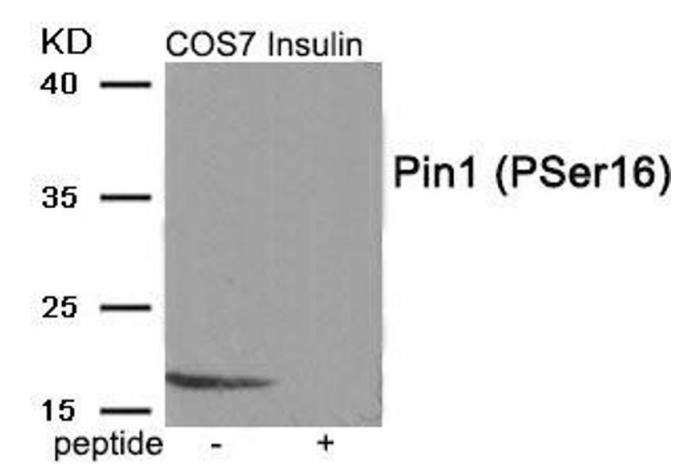
Handling

Format:	Liquid
Buffer:	Rabbit IgG in phosphate buffered saline (without Mg ²⁺ and Ca ²⁺), pH 7.4, 150 mM NaCl, 0.02 % sodium azide and 50 % glycerol.
Preservative:	Sodium azide
Precaution of Use:	This product contains Sodium azide: a POISONOUS AND HAZARDOUS SUBSTANCE which should be handled by trained staff only.
Storage:	-20 °C,-80 °C

Handling

Storage Comment: Upon receipt, store at -20°C or -80°C. Avoid repeated freeze.

Images



Western Blotting

Image 1. Western blot analysis of extracts from COS7 cells treated with Insulin using Phospho-Pin1 (Ser16) antibody. The lane on the right is treated with the antigen-specific peptide.