

Datasheet for ABIN7138759
anti-Dynamin 1-Like antibody (pSer637)



[Go to Product page](#)

1 Image

Overview

Quantity:	100 µL
Target:	Dynamin 1-Like (DNM1L)
Binding Specificity:	pSer637
Reactivity:	Human
Host:	Rabbit
Clonality:	Polyclonal
Conjugate:	This Dynamin 1-Like antibody is un-conjugated
Application:	Western Blotting (WB), ELISA

Product Details

Immunogen:	Peptide sequence around phosphorylation site of Serine637(K-L-S(p)-A-R) derived from Human DRP1.
Isotype:	IgG
Cross-Reactivity:	Human, Mouse, Rat
Purification:	Antibodies were produced by immunizing rabbits with synthetic phosphopeptide and KLH conjugates. Antibodies were purified by affinity-chromatography using epitope-specific phosphopeptide. Non-phospho specific antibodies were removed by chromatography using

Target Details

Target:	Dynamin 1-Like (DNM1L)
Alternative Name:	DNM1L (DNM1L Products)

Target Details

Background:

Background:

Functions in mitochondrial and peroxisomal division. Mediates membrane fission through oligomerization into membrane-associated tubular structures that wrap around the scission site to constrict and sever the mitochondrial membrane through a GTP hydrolysis-dependent mechanism. Through its function in mitochondrial division, ensures the survival of at least some types of postmitotic neurons, including Purkinje cells, by suppressing oxidative damage. Required for normal brain development, including that of cerebellum. Facilitates developmentally regulated apoptosis during neural tube formation.

Shin H.-W., J. Biochem. 122:525-530(1997).

Hong Y.-R., Biochem. Biophys. Res. Commun. 249:697-703(1998).

Imoto M., J. Cell Sci. 111:1341-1349(1998).

Aliases: DLP1 antibody, dnm1l antibody, DNM1L_HUMAN antibody, Dnm1p/Vps1p-like protein antibody, dnml1 antibody, DRP1 antibody, DVLP antibody, Dymple antibody, Dynamin 1 like antibody, Dynamin family member proline-rich carboxyl-terminal domain less antibody, Dynamin like protein antibody, Dynamin related protein 1 antibody, Dynamin-1-like protein antibody, Dynamin-like protein 4 antibody, Dynamin-like protein antibody, Dynamin-like protein IV antibody, Dynamin-related protein 1 antibody, DYNIV 11 antibody, EMPF antibody, EMPF1 antibody, FLJ41912 antibody, HdynIV antibody, VPS1 antibody

UniProt:

[000429](#)

Application Details

Application Notes:

WB:1:500-1:1000,

Restrictions:

For Research Use only

Handling

Format:

Liquid

Buffer:

Rabbit IgG in phosphate buffered saline (without Mg²⁺ and Ca²⁺), pH 7.4, 150 mM NaCl, 0.02 % sodium azide and 50 % glycerol.

Preservative:

Sodium azide

Precaution of Use:

This product contains Sodium azide: a POISONOUS AND HAZARDOUS SUBSTANCE which should be handled by trained staff only.

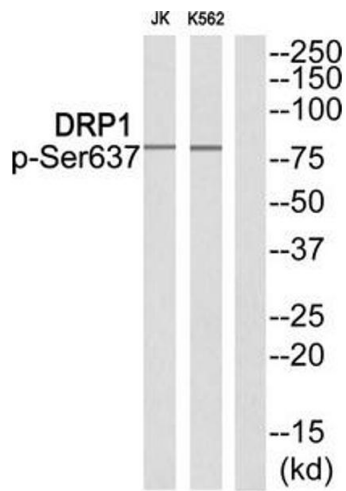
Storage:

-20 °C,-80 °C

Handling

Storage Comment: Upon receipt, store at -20°C or -80°C. Avoid repeated freeze.

Images



Western Blotting

Image 1. Western blot analysis of extracts from JK cells and K562 cells using DRP1 (Phospho-Ser637) Antibody. The lane on the right is treated with the antigen-specific peptide.