



[Go to Product page](#)

Datasheet for ABIN7138774
anti-MAP3K1 antibody (pThr1402)

2 Images

Overview

Quantity:	100 µL
Target:	MAP3K1
Binding Specificity:	pThr1402
Reactivity:	Human
Host:	Rabbit
Clonality:	Polyclonal
Conjugate:	This MAP3K1 antibody is un-conjugated
Application:	Western Blotting (WB), ELISA, Immunohistochemistry (IHC)

Product Details

Immunogen:	Peptide sequence around phosphorylation site of threonine 1402(T-G-A(p)-G-F) derived from Human MAP3K1.
Isotype:	IgG
Cross-Reactivity:	Human, Mouse, Rat
Purification:	Antibodies were produced by immunizing rabbits with synthetic phosphopeptide and KLH conjugates. Antibodies were purified by affinity-chromatography using epitope-specific phosphopeptide. Non-phospho specific antibodies were removed by chromatography using

Target Details

Target:	MAP3K1
Alternative Name:	MAP3K1 (MAP3K1 Products)

Target Details

Background: Background:
Component of a protein kinase signal transduction cascade. Activates the ERK and JNK kinase pathways by phosphorylation of MAP2K1 and MAP2K4. Activates CHUK and IKBKB, the central protein kinases of the NF-kappa-B pathway.

Schmutz J., Nature 431:268-274(2004).
Xia Y., Genes Dev. 12:3369-3381(1998).
Vinik B.S., Mamm. Genome 6:782-783(1995)

Aliases: M3K1_HUMAN antibody, MAP3K1 antibody, MAPK/ERK kinase kinase 1 antibody, MAPKKK1 antibody, MEK kinase 1 antibody, MEKK 1 antibody, Mekk antibody, MEKK1 antibody, Mitogen activated protein kinase kinase kinase 1 antibody, Mitogen activated protein kinase kinase kinase 1, E3 ubiquitin protein ligase antibody, Mitogen-activated protein kinase kinase 1 antibody, SRXY6 antibody

UniProt: [Q13233](#)

Pathways: [MAPK Signaling](#), [Interferon-gamma Pathway](#), [Caspase Cascade in Apoptosis](#), [TLR Signaling](#), [Fc-epsilon Receptor Signaling Pathway](#), [Activation of Innate immune Response](#), [Regulation of Actin Filament Polymerization](#), [Toll-Like Receptors Cascades](#)

Application Details

Application Notes: WB:1:500-1:1000, IHC:1:50-1:100,

Restrictions: For Research Use only

Handling

Format: Liquid

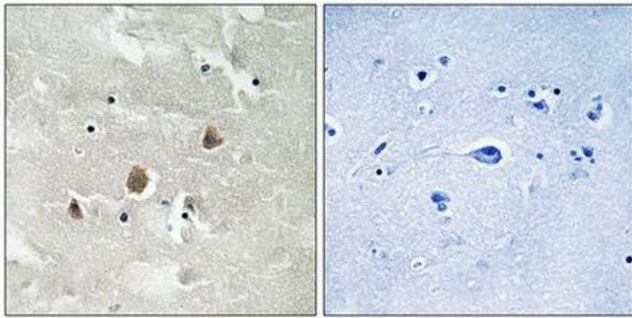
Buffer: Rabbit IgG in phosphate buffered saline (without Mg²⁺ and Ca²⁺), pH 7.4, 150 mM NaCl, 0.02 % sodium azide and 50 % glycerol.

Preservative: Sodium azide

Precaution of Use: This product contains Sodium azide: a POISONOUS AND HAZARDOUS SUBSTANCE which should be handled by trained staff only.

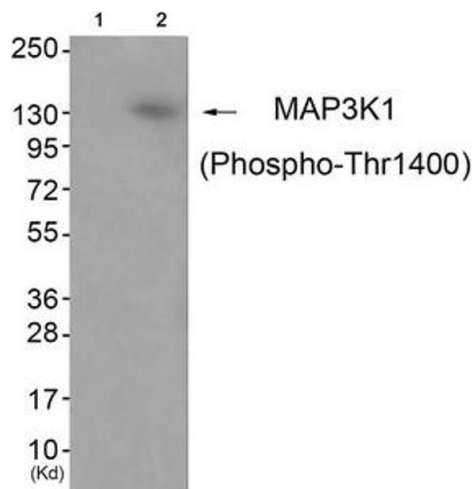
Storage: -20 °C,-80 °C

Storage Comment: Upon receipt, store at -20°C or -80°C. Avoid repeated freeze.



Immunohistochemistry

Image 1. Immunohistochemical analysis of paraffin-embedded human brain tissue using MAP3K1 (Phospho-Thr1400) antibody (left) or the same antibody preincubated with blocking peptide (right).



Western Blotting

Image 2. Western blot analysis of extracts from JK cells (Lane 2), using MAP3K1 (Phospho-Thr1400) Antibody. The lane on the left is treated with antigen-specific peptide.