



Datasheet for ABIN7138779  
**anti-PLD1 antibody (pThr147)**



[Go to Product page](#)

1 Image

Overview

Quantity:	100 µL
Target:	PLD1
Binding Specificity:	pThr147
Reactivity:	Human
Host:	Rabbit
Clonality:	Polyclonal
Conjugate:	This PLD1 antibody is un-conjugated
Application:	ELISA, Western Blotting (WB)

Product Details

Immunogen:	Peptide sequence around phosphorylation site of threonine 147(R-H-T(p)-F-R) derived from Human PLD1.
Isotype:	IgG
Cross-Reactivity:	Human, Mouse, Rat
Purification:	Antibodies were produced by immunizing rabbits with synthetic phosphopeptide and KLH conjugates. Antibodies were purified by affinity-chromatography using epitope-specific phosphopeptide. Non-phospho specific antibodies were removed by chromatography using

Target Details

Target:	PLD1
Alternative Name:	PLD1 ( <a href="#">PLD1 Products</a> )

## Target Details

---

Background:

Background:

Phosphatidylcholine (PC)-specific phospholipases D (PLDs, EC 3.1.4.4) catalyze the hydrolysis of PC to produce phosphatidic acid and choline. A range of agonists acting through G protein-coupled receptors and receptor tyrosine kinases stimulate this hydrolysis. PC-specific PLD activity has been implicated in numerous cellular pathways, including signal transduction, membrane trafficking, and the regulation of mitosis.

Hammond S.M., J. Biol. Chem. 272:3860-3868(1997) [PubMed: 9013646].

Steed P.M., FASEB J. 12:1309-1317(1998) [PubMed: 9761774].

Lopez I., J. Biol. Chem. 273:12846-12852(1998) [PubMed: 9582313].

Aliases: Choline phosphatase 1 antibody, hPLD1 antibody, Phosphatidylcholine-hydrolyzing phospholipase D1 antibody, Phospholipase D1 antibody, PLD 1 antibody, PLD1 antibody, PLD1\_HUMAN antibody

---

UniProt:

[Q13393](#)

## Application Details

---

Application Notes:

WB:1:500-1:1000,

Restrictions:

For Research Use only

## Handling

---

Format:

Liquid

Buffer:

Rabbit IgG in phosphate buffered saline (without Mg<sup>2+</sup> and Ca<sup>2+</sup>), pH 7.4, 150 mM NaCl, 0.02 % sodium azide and 50 % glycerol.

Preservative:

Sodium azide

Precaution of Use:

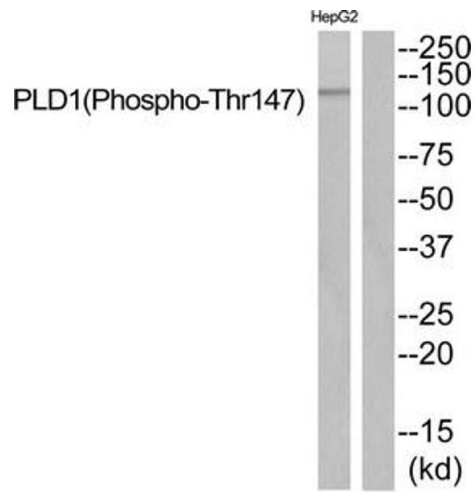
This product contains Sodium azide: a POISONOUS AND HAZARDOUS SUBSTANCE which should be handled by trained staff only.

Storage:

-20 °C,-80 °C

Storage Comment:

Upon receipt, store at -20°C or -80°C. Avoid repeated freeze.



### Western Blotting

**Image 1.** Western blot analysis of extracts from HepG2 cells using PLD1 (Phospho-Thr147) Antibody. The lane on the right is treated with the antigen-specific peptide.