

Datasheet for ABIN7138811
anti-CEBPA antibody (pThr230)



[Go to Product page](#)

1 Image

Overview

Quantity:	100 µL
Target:	CEBPA
Binding Specificity:	pThr230
Reactivity:	Human
Host:	Rabbit
Clonality:	Polyclonal
Conjugate:	This CEBPA antibody is un-conjugated
Application:	Western Blotting (WB), ELISA

Product Details

Immunogen:	Peptide sequence around phosphorylation site of threonine 230 (P-P-T(p)-P-V) derived from Human C/EBP-alpha.
Isotype:	IgG
Cross-Reactivity:	Human, Mouse, Rat
Purification:	Antibodies were produced by immunizing rabbits with synthetic phosphopeptide and KLH conjugates. Antibodies were purified by affinity-chromatography using epitope-specific phosphopeptide. Non-phospho specific antibodies were removed by chromatography using

Target Details

Target:	CEBPA
Alternative Name:	CEBPA (CEBPA Products)

Target Details

Background: Background: The protein encoded by this intronless gene is a bZIP transcription factor which can bind as a homodimer to certain promoters and enhancers. It can also form heterodimers with the related proteins CEBP-beta and CEBP-gamma. The encoded protein has been shown to bind to the promoter and modulate the expression of the gene encoding leptin, a protein that plays an important role in body weight homeostasis. Also, the encoded protein can interact with CDK2 and CDK4, thereby inhibiting these kinases and causing growth arrest in cultured cells. Xanthopoulos K.G. Biochem. Biophys. Res. Commun. 215:106-113(1995)Schalwijk J. Biol. Chem. Hoppe-Seyler 378:373-379(1997)SeattleSNPs variation discovery resource Submitted (JUL-2007) to the EMBL/GenBank/DDBJ databases

Aliases: Apoptotic cysteine protease antibody, Apoptotic protease Mch 5 antibody, C/EBP alpha antibody, C/ebpalpha antibody, CAP4 antibody, Caspase 8 precursor antibody, CBF-A antibody, CCAAT Enhancer Binding Protein alpha antibody, CCAAT/enhancer binding protein (C/EBP), alpha antibody, CCAAT/enhancer-binding protein alpha antibody, CEBP antibody, CEBP A antibody, CEBP alpha antibody, Cebpa antibody, CEBPA_HUMAN antibody, FADD homologous ICE/CED 3 like protease antibody, FADD like ICE antibody, FLICE antibody, ICE like apoptotic protease 5 antibody, ICE8 antibody, MACH antibody, MCH5 antibody, MORT1 associated CED 3 homolog antibody

UniProt: [P49715](#)

Pathways: [Brown Fat Cell Differentiation](#), [Positive Regulation of fat Cell Differentiation](#)

Application Details

Application Notes: WB:1:500-1:1000,

Restrictions: For Research Use only

Handling

Format: Liquid

Buffer: Rabbit IgG in phosphate buffered saline (without Mg²⁺ and Ca²⁺), pH 7.4, 150 mM NaCl, 0.02 % sodium azide and 50 % glycerol.

Preservative: Sodium azide

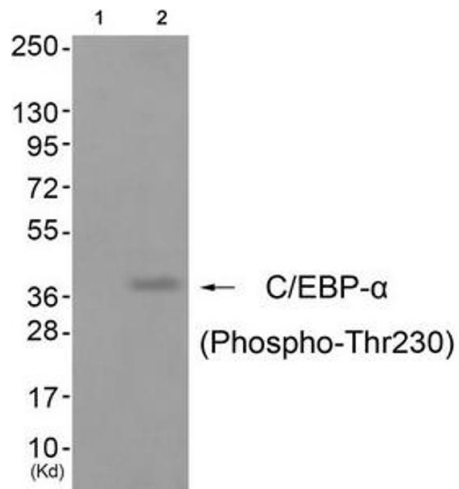
Precaution of Use: This product contains Sodium azide: a POISONOUS AND HAZARDOUS SUBSTANCE which should be handled by trained staff only.

Storage: -20 °C,-80 °C

Handling

Storage Comment: Upon receipt, store at -20°C or -80°C. Avoid repeated freeze.

Images



Western Blotting

Image 1. Western blot analysis of extracts from cos-7 cells (Lane 2), using C/EBP- α (Phospho-Thr230) Antibody. The lane on the left is treated with antigen-specific peptide.