

Datasheet for ABIN7138819  
**anti-MKNK1 antibody (pThr255)**[Go to Product page](#)

## 1 Image

## Overview

|                      |                                      |
|----------------------|--------------------------------------|
| Quantity:            | 100 µL                               |
| Target:              | MKNK1                                |
| Binding Specificity: | pThr255                              |
| Reactivity:          | Human                                |
| Host:                | Rabbit                               |
| Clonality:           | Polyclonal                           |
| Conjugate:           | This MKNK1 antibody is un-conjugated |
| Application:         | Western Blotting (WB), ELISA         |

## Product Details

|                   |  |
|-------------------|--|
| Immunogen:        | Peptide sequence around phosphorylation site of threonine 255 (L-T-T(p)-P-C) derived from Human MNK1.  |
| Isotype:          | IgG  |
| Cross-Reactivity: | Human, Mouse, Rat  |
| Purification:     | Antibodies were produced by immunizing rabbits with synthetic phosphopeptide and KLH conjugates. Antibodies were purified by affinity-chromatography using epitope-specific phosphopeptide. Non-phospho specific antibodies were removed by chromatography using |

## Target Details

|                   |  |
|-------------------|--|
| Target:           | MKNK1                                    |
| Alternative Name: | MKNK1 ( <a href="#">MKNK1 Products</a> ) |

## Target Details

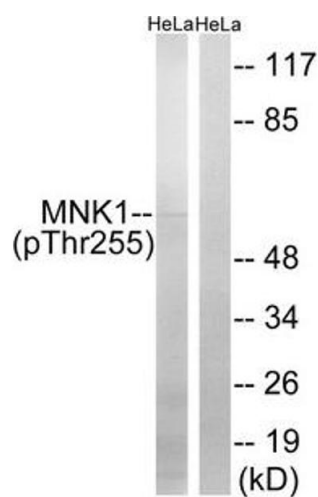
|             |   |
|-------------|---|
| Background: | <p>Background: May play a role in the response to environmental stress and cytokines. Appears to regulate translation by phosphorylating EIF4E, thus increasing the affinity of this protein for the 7-methylguanosine-containing mRNA cap.</p> <p>Aliases: MAP kinase interacting kinase 1 antibody, MAP kinase interacting serine/threonine kinase 1 antibody, MAP kinase signal integrating kinase 1 antibody, MAP kinase signal-integrating kinase 1 antibody, MAP kinase-interacting serine/threonine-protein kinase 1 antibody, MAPK signal integrating kinase 1 antibody, MITOGEN-ACTIVATED PROTEIN KINASE-INTERACTING SERINE/THREONINE KINASE 1 antibody, mknk1 antibody, MKNK1_HUMAN antibody, MNK 1 antibody, Mnk1 antibody</p> |
| UniProt:    | <a href="#">Q9BUB5</a>  |
| Pathways:   | <a href="#">MAPK Signaling</a> , <a href="#">Cellular Response to Molecule of Bacterial Origin</a> , <a href="#">Hepatitis C</a> , <a href="#">Protein targeting to Nucleus</a> , <a href="#">Toll-Like Receptors Cascades</a> , <a href="#">Signaling of Hepatocyte Growth Factor Receptor</a>   |

## Application Details

|                    |                       |
|--------------------|-----------------------|
| Application Notes: | WB:1:500-1:3000,      |
| Restrictions:      | For Research Use only |

## Handling

|                    |   |
|--------------------|---|
| Format:            | Liquid  |
| Buffer:            | Rabbit IgG in phosphate buffered saline (without Mg <sup>2+</sup> and Ca <sup>2+</sup> ), pH 7.4, 150 mM NaCl, 0.02 % sodium azide and 50 % glycerol. |
| Preservative:      | Sodium azide  |
| Precaution of Use: | This product contains Sodium azide: a POISONOUS AND HAZARDOUS SUBSTANCE which should be handled by trained staff only.                                |
| Storage:           | -20 °C,-80 °C   |
| Storage Comment:   | Upon receipt, store at -20°C or -80°C. Avoid repeated freeze.   |



Western Blotting

**Image 1.** Western blot analysis of extracts from HeLa cells, treated with Adriamycin (0.5 µg/mL, 24hours), using MNK1 (Phospho-Thr255) antibody. The lane on the right is treated with the synthesized peptide.