

Datasheet for ABIN7138823
anti-Cyclin D2 antibody (pThr280)



[Go to Product page](#)

1 Image

Overview

Quantity:	100 µL
Target:	Cyclin D2 (CCND2)
Binding Specificity:	pThr280
Reactivity:	Human
Host:	Rabbit
Clonality:	Polyclonal
Conjugate:	This Cyclin D2 antibody is un-conjugated
Application:	Western Blotting (WB), ELISA

Product Details

Immunogen:	Peptide sequence around phosphorylation site of threonine 280 (A-S-T(p)-P-T) derived from Human Cyclin D2.
Isotype:	IgG
Cross-Reactivity:	Human, Mouse, Rat
Purification:	Antibodies were produced by immunizing rabbits with synthetic phosphopeptide and KLH conjugates. Antibodies were purified by affinity-chromatography using epitope-specific phosphopeptide. Non-phospho specific antibodies were removed by chromatography using

Target Details

Target:	Cyclin D2 (CCND2)
Alternative Name:	CCND2 (CCND2 Products)

Target Details

Background:	<p>Background: Regulatory component of the cyclin D2-CDK4 (DC) complex that phosphorylates and inhibits members of the retinoblastoma (RB) protein family including RB1 and regulates the cell-cycle during G1/S transition. Phosphorylation of RB1 allows dissociation of the transcription factor E2F from the RB/E2F complex and the subsequent transcription of E2F target genes which are responsible for the progression through the G1 phase.</p> <p>Hypophosphorylates RB1 in early G1 phase. Cyclin D-CDK4 complexes are major integrators of various mitogenic and antimitogenic signals. Also substrate for SMAD3, phosphorylating SMAD3 in a cell-cycle-dependent manner and repressing its transcriptional activity. Component of the ternary complex, cyclin D2/CDK4/CDKN1B, required for nuclear translocation and activity of the cyclin D-CDK4 complex By similarity.</p> <p>Aliases: CCND 2 antibody, ccnd2 antibody, CCND2_HUMAN antibody, CyclinD2 antibody, G1/S specific cyclin D2 antibody, G1/S-specific cyclin-D2 antibody, KIAK0002 antibody, MGC102758 antibody, MPPH3 antibody</p>
-------------	--

UniProt:	P30279
----------	------------------------

Pathways:	Cell Division Cycle , Mitotic G1-G1/S Phases
-----------	--

Application Details

Application Notes:	WB:1:500-1:3000,
--------------------	------------------

Restrictions:	For Research Use only
---------------	-----------------------

Handling

Format:	Liquid
---------	--------

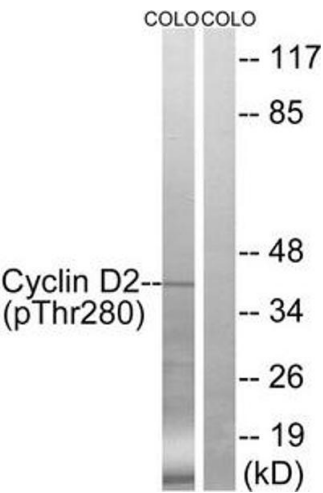
Buffer:	Rabbit IgG in phosphate buffered saline (without Mg ²⁺ and Ca ²⁺), pH 7.4, 150 mM NaCl, 0.02 % sodium azide and 50 % glycerol.
---------	---

Preservative:	Sodium azide
---------------	--------------

Precaution of Use:	This product contains Sodium azide: a POISONOUS AND HAZARDOUS SUBSTANCE which should be handled by trained staff only.
--------------------	--

Storage:	-20 °C,-80 °C
----------	---------------

Storage Comment:	Upon receipt, store at -20°C or -80°C. Avoid repeated freeze.
------------------	---



Western Blotting

Image 1. Western blot analysis of extracts from COLO cells, treated with EGF (200 ng/mL, 30 mins), using Cyclin D2 (Phospho-Thr280) antibody. The lane on the right is treated with the synthesized peptide.