

Datasheet for ABIN7138826  
**anti-CAMK2A antibody (pThr286)**[Go to Product page](#)

## 2 Images

## Overview

Quantity:	100 µL
Target:	CAMK2A
Binding Specificity:	pThr286
Reactivity:	Human
Host:	Rabbit
Clonality:	Polyclonal
Conjugate:	This CAMK2A antibody is un-conjugated
Application:	Western Blotting (WB), ELISA

## Product Details

Immunogen:	Peptide sequence around phosphorylation site of threonine 286 (Q-E-T(p)-V-D) derived from Human CaMKII.
Isotype:	IgG
Cross-Reactivity:	Human, Mouse, Rat
Purification:	Antibodies were produced by immunizing rabbits with synthetic phosphopeptide and KLH conjugates. Antibodies were purified by affinity-chromatography using epitope-specific phosphopeptide. Non-phospho specific antibodies were removed by chromatography using

## Target Details

Target:	CAMK2A
Alternative Name:	CAMK2A ( <a href="#">CAMK2A Products</a> )

## Target Details

Background:	<p>Background:</p> <p>CaM-kinase II (CAMK2) is a prominent kinase in the central nervous system that may function in long-term potentiation and neurotransmitter release. Member of the NMDAR signaling complex in excitatory synapses it may regulate NMDAR-dependent potentiation of the AMPAR and synaptic plasticity</p> <p>Pak JH, et al. Proc Natl Acad Sci U S A. 2000 Oct 10, 97(21): 11232-11237</p> <p>Hudmon A, et al. J Cell Biol. Author manuscript, available in PMC 2006 May 7</p> <p>Miller P, et al. PLoS Biol. 2005 Apr, 3(4): e107</p> <p>Runyan JD, et al. Learn Mem. 2005 Mar, 12(2): 103-110.</p> <p>Aliases: Calcium/calmodulin dependent protein kinase II alpha antibody, Calcium/calmodulin dependent protein kinase II beta antibody, Calcium/calmodulin dependent protein kinase II delta antibody, Calcium/calmodulin dependent protein kinase II gamma antibody, Calcium/calmodulin-dependent protein kinase type II subunit alpha antibody, CaM kinase II alpha antibody, CaM kinase II antibody, CaM kinase II beta antibody, CaM kinase II delta antibody, CaM kinase II gamma antibody, CaM kinase II subunit alpha antibody, CaMK-II subunit alpha antibody, CAMK2 antibody, Camk2a antibody, CAMK2B antibody, CAMK2D antibody, CAMK2G antibody, CAMKA antibody, KCC2A_HUMAN antibody</p>
UniProt:	<a href="#">Q9UQM7</a>
Pathways:	<a href="#">WNT Signaling</a> , <a href="#">Interferon-gamma Pathway</a> , <a href="#">Myometrial Relaxation and Contraction</a>

## Application Details

Application Notes:	WB:1:500-1:1000,
Restrictions:	For Research Use only

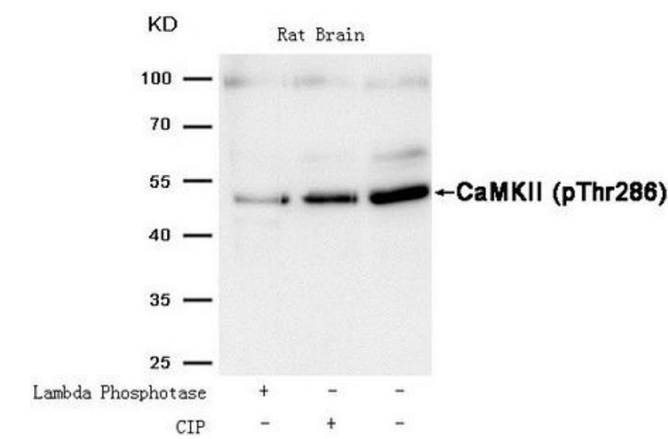
## Handling

Format:	Liquid
Buffer:	Supplied at 1.0 mg/mL in phosphate buffered saline (without Mg <sup>2+</sup> and Ca <sup>2+</sup> ), pH 7.4, 150 mM NaCl, 0.02 % sodium azide and 50 % glycerol.
Preservative:	Sodium azide
Precaution of Use:	This product contains Sodium azide: a POISONOUS AND HAZARDOUS SUBSTANCE which should be handled by trained staff only.

Handling

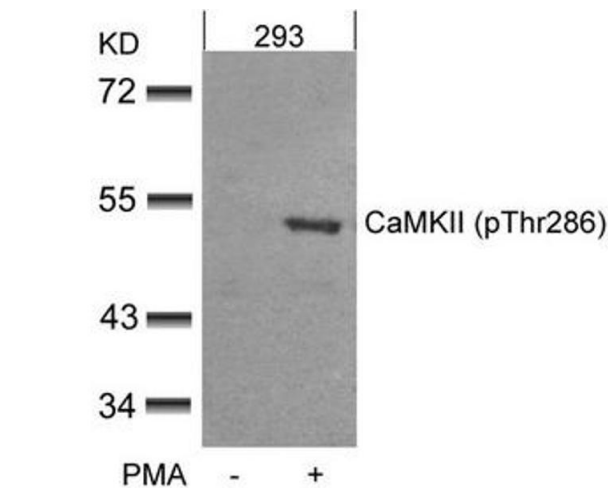
Storage:	-20 °C,-80 °C
Storage Comment:	Upon receipt, store at -20°C or -80°C. Avoid repeated freeze.

Images



**Western Blotting**

**Image 1.** Western blot analysis of extracts from Rat brain tissue treated with Lambda Phosphatase or calf intestinal phosphatase (CIP), using CaMKII (Phospho-Thr286) Antibody.



**Western Blotting**

**Image 2.** Western blot analysis of extracts from 293 cells untreated or treated with PMA using CaMKII(Phospho-Thr286) Antibody.