

Datasheet for ABIN7138828
anti-Aurora A antibody (pThr288)[Go to Product page](#)

2 Images

Overview

Quantity:	100 µL
Target:	Aurora A (AURKA)
Binding Specificity:	pThr288
Reactivity:	Human
Host:	Rabbit
Clonality:	Polyclonal
Conjugate:	This Aurora A antibody is un-conjugated
Application:	Western Blotting (WB), ELISA, Immunohistochemistry (IHC)

Product Details

Immunogen:	Peptide sequence around phosphorylation site of threonine 288 (R-T-T(p)-L-M) derived from Human Aurora A.
Isotype:	IgG
Cross-Reactivity:	Human, Mouse
Purification:	Antibodies were produced by immunizing rabbits with synthetic phosphopeptide and KLH conjugates. Antibodies were purified by affinity-chromatography using epitope-specific phosphopeptide. Non-phospho specific antibodies were removed by chromatography using

Target Details

Target:	Aurora A (AURKA)
Alternative Name:	AURKA (AURKA Products)

Target Details

Background:

Background:

Contributes to the regulation of cell cycle progression. Required for normal mitosis. Associates with the centrosome and the spindle microtubules during mitosis and functions in centrosome maturation, spindle assembly, maintenance of spindle bipolarity, centrosome separation and mitotic checkpoint control. Phosphorylates numerous target proteins, including ARHGEF2, BRCA1, KIF2A, NDEL1, PARD3, PLK1 and BORA. Regulates KIF2A tubulin depolymerase activity By similarity. Required for normal axon formation. Plays a role in microtubule remodeling during neurite extension. Important for microtubule formation and/or stabilization.

Bischoff, J.R. et al. (1998) EMBO J 17, 3052-65.

Hauf, S. et al. (2003) J Cell Biol 161, 281-94.

Walter, A.O. et al. (2000) Oncogene 19, 4906-16.

Zhou, H. et al. (1998) Nat Genet 20, 189-93.

Aliases: AIK antibody, ARK-1 antibody, ARK1 antibody, AURA antibody, Aurka antibody, Aurora 2 antibody, Aurora A antibody, Aurora kinase A antibody, Aurora-related kinase 1 antibody, Aurora/IPL1 like kinase antibody, AURORA/IPL1-like kinase antibody, Aurora/IPL1-related kinase 1 antibody, AURORA2 antibody, Breast tumor-amplified kinase antibody, BTAK antibody, hARK1 antibody, IAK antibody, IPL1 related kinase antibody, MGC34538 antibody, OTTHUMP00000031340 antibody, OTTHUMP00000031341 antibody, OTTHUMP00000031342 antibody, OTTHUMP00000031343 antibody, OTTHUMP00000031344 antibody, OTTHUMP00000031345 antibody, OTTHUMP00000166071 antibody, OTTHUMP00000166072 antibody, PPP1R47 antibody, Protein phosphatase 1, regulatory subunit 47 antibody, Serine/threonine kinase 15 antibody, Serine/threonine kinase 6 antibody, Serine/threonine protein kinase 15 antibody, Serine/threonine-protein kinase 15 antibody, Serine/threonine-protein kinase 6 antibody, Serine/threonine-protein kinase aurora-A antibody, STK15 antibody, STK6 antibody, STK6_HUMAN antibody, STK7 antibody

UniProt:

[O14965](#)

Pathways:

[Cell Division Cycle](#), [Asymmetric Protein Localization](#)

Application Details

Application Notes:

WB:1:500-1:1000, IHC:1:50-1:100,

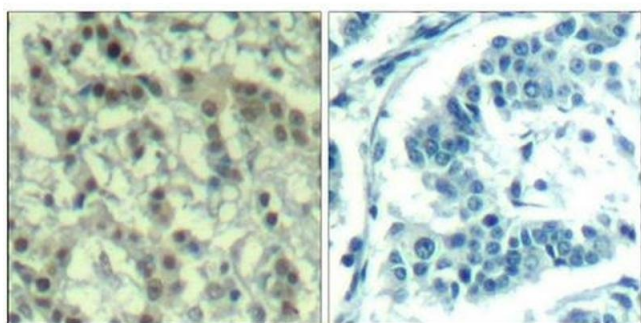
Restrictions:

For Research Use only

Handling

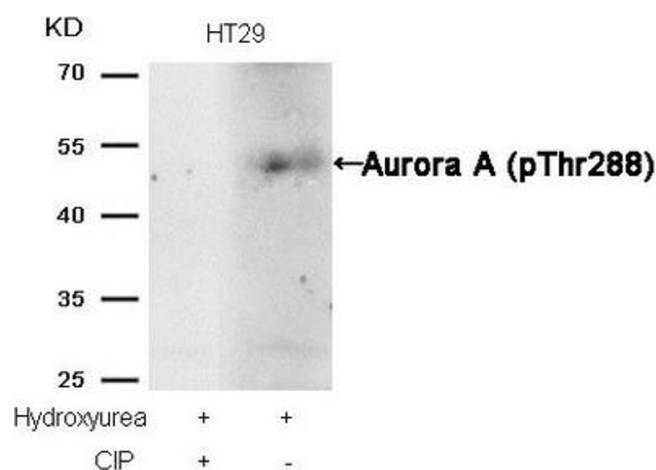
Format:	Liquid
Buffer:	Supplied at 1.0 mg/mL in phosphate buffered saline (without Mg ²⁺ and Ca ²⁺), pH 7.4, 150 mM NaCl, 0.02 % sodium azide and 50 % glycerol.
Preservative:	Sodium azide
Precaution of Use:	This product contains Sodium azide: a POISONOUS AND HAZARDOUS SUBSTANCE which should be handled by trained staff only.
Storage:	-20 °C,-80 °C
Storage Comment:	Upon receipt, store at -20°C or -80°C. Avoid repeated freeze.

Images



Immunohistochemistry

Image 1. Immunohistochemical analysis of paraffin-embedded human breast carcinoma tissue using Aurora A(Phospho-Thr288) Antibody(left) or the same antibody preincubated with blocking peptide(right).



Western Blotting

Image 2. Western blot analysis of extracts from HT29 cells, treated with Hydroxyurea or calf intestinal phosphatase (CIP), using Aurora A (phospho-Thr288) Antibody.