



[Go to Product page](#)

Datasheet for ABIN7138833
anti-Cyclin H antibody (pThr315)

1 Image

Overview

Quantity:	100 µL
Target:	Cyclin H (CCNH)
Binding Specificity:	pThr315
Reactivity:	Human
Host:	Rabbit
Clonality:	Polyclonal
Conjugate:	This Cyclin H antibody is un-conjugated
Application:	Western Blotting (WB), ELISA

Product Details

Immunogen:	Peptide sequence around phosphorylation site of threonine 315 (E-W-T(p)-D-D) derived from Human Cyclin H .
Isotype:	IgG
Cross-Reactivity:	Human, Mouse
Purification:	Antibodies were produced by immunizing rabbits with synthetic phosphopeptide and KLH conjugates. Antibodies were purified by affinity-chromatography using epitope-specific phosphopeptide. Non-phospho specific antibodies were removed by chromatography using

Target Details

Target:	Cyclin H (CCNH)
Alternative Name:	CCNH (CCNH Products)

Target Details

Background:

Background:

Regulates CDK7, the catalytic subunit of the CDK-activating kinase (CAK) enzymatic complex. CAK activates the cyclin-associated kinases CDK1, CDK2, CDK4 and CDK6 by threonine phosphorylation. CAK complexed to the core-TFIID basal transcription factor activates RNA polymerase II by serine phosphorylation of the repetitive C-terminal domain (CTD) of its large subunit (POLR2A), allowing its escape from the promoter and elongation of the transcripts. Involved in cell cycle control and in RNA transcription by RNA polymerase II. Its expression and activity are constant throughout the cell cycle.

Maekelae T.P., Nature 371:254-257(1994).

Fisher R.P., Cell 78:713-724(1994).

The MGC Project Team, Genome Res. 14:2121-2127(2004).

Aliases: 6330408H09Rik antibody, A1661354 antibody, AV102684 antibody, AW538719 antibody, CAK antibody, CAK complex subunit antibody, ccnh antibody, CCNH_HUMAN antibody, CDK activating kinase antibody, CDK activating kinase complex subunit antibody, Cyclin dependent kinase activating kinase antibody, cyclin dependent kinase activating kinase complex subunit antibody, Cyclin H antibody, Cyclin-H antibody, CyclinH antibody, MO15 associated protein antibody, MO15-associated protein antibody, p34 antibody, p36 antibody, p37 antibody

UniProt:

[P51946](#)

Pathways:

[Cell Division Cycle](#), [Mitotic G1-G1/S Phases](#), [M Phase](#)

Application Details

Application Notes:

WB:1:500-1:1000,

Restrictions:

For Research Use only

Handling

Format:

Liquid

Buffer:

Rabbit IgG in phosphate buffered saline (without Mg²⁺ and Ca²⁺), pH 7.4, 150 mM NaCl, 0.02 % sodium azide and 50 % glycerol.

Preservative:

Sodium azide

Precaution of Use:

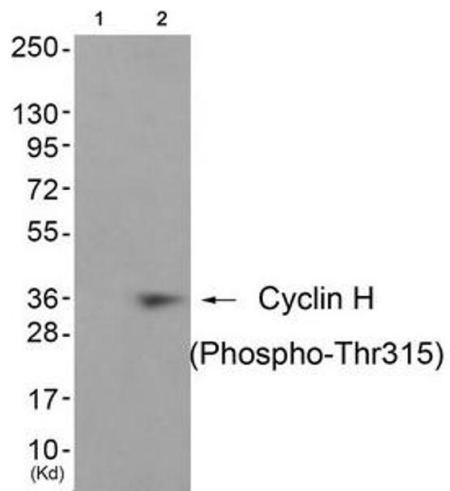
This product contains Sodium azide: a POISONOUS AND HAZARDOUS SUBSTANCE which should be handled by trained staff only.

Handling

Storage: -20 °C,-80 °C

Storage Comment: Upon receipt, store at -20°C or -80°C. Avoid repeated freeze.

Images



Western Blotting

Image 1. Western blot analysis of extracts from JK cells (Lane 2), using Cyclin H (Phospho-Thr315) Antibody. The lane on the left is treated with antigen-specific peptide.