

Datasheet for ABIN7138837
anti-RPS6KA1 antibody (pThr348)



[Go to Product page](#)

3 Images

Overview

Quantity:	100 µL
Target:	RPS6KA1
Binding Specificity:	pThr348
Reactivity:	Human
Host:	Rabbit
Clonality:	Polyclonal
Conjugate:	This RPS6KA1 antibody is un-conjugated
Application:	Western Blotting (WB), ELISA, Immunohistochemistry (IHC), Immunofluorescence (IF)

Product Details

Immunogen:	Peptide sequence around phosphorylation site of threonine 348 (S-R-T(p)-P-R) derived from Human p90RSK.
Isotype:	IgG
Cross-Reactivity:	Human, Mouse, Rat
Purification:	Antibodies were produced by immunizing rabbits with synthetic phosphopeptide and KLH conjugates. Antibodies were purified by affinity-chromatography using epitope-specific phosphopeptide. Non-phospho specific antibodies were removed by chromatography using

Target Details

Target:	RPS6KA1
Alternative Name:	RPS6KA1 (RPS6KA1 Products)

Target Details

Background:	Background: Serine/threonine kinase that may play a role in mediating the growth-factor and stress induced activation of the transcription factor CREB. Silverman E, et al. Mol Cell Biol. 2004 Dec, 24(24): 10573-10583. Andrew D, et al. Biochem J. 2006 February 1, 393(Pt 3): 715 Aliases: 90 kDa ribosomal protein S6 kinase 1 antibody, dJ590P13.1 (ribosomal protein S6 kinase, 90kD, polypeptide 1 antibody, dJ590P13.1 antibody, EC 2.7.11.1 antibody, HU 1 antibody, HU1 antibody, KS6A1_HUMAN antibody, MAP kinase activated protein kinase 1a antibody, MAP kinase-activated protein kinase 1a antibody, MAPK-activated protein kinase 1a antibody, MAPKAP kinase 1a antibody, MAPKAPK-1a antibody, MAPKAPK1A antibody, MGC79981 antibody, Mitogen-activated protein kinase-activated protein kinase 1A antibody, OTTHUMP00000004113 antibody, p90 RSK1 antibody, p90-RSK 1 antibody, p90rsk antibody, p90RSK1 antibody, p90S6K antibody, pp90RSK1 antibody, Ribosomal protein S6 kinase 90kD 1 antibody, Ribosomal protein S6 kinase 90kD polypeptide 1 antibody, Ribosomal protein S6 kinase 90 kDa polypeptide 1 antibody, Ribosomal protein S6 kinase alpha 1 antibody, Ribosomal protein S6 kinase alpha-1 antibody, Ribosomal protein S6 kinase polypeptide 1 antibody, Ribosomal S6 kinase 1 antibody, RPS6K1 alpha antibody, rps6ka antibody, Rps6ka1 antibody, RSK 1 antibody, RSK 1 p90 antibody, RSK antibody, RSK-1 antibody, RSK1 antibody, RSK1p90 antibody, S6K alpha 1 antibody, S6K-alpha-1 antibody
-------------	--

UniProt:	Q15418
----------	------------------------

Pathways:	MAPK Signaling , Neurotrophin Signaling Pathway , Activation of Innate immune Response , Toll-Like Receptors Cascades
-----------	---

Application Details

Application Notes:	WB:1:500-1:1000, IHC:1:50-1:100, IF:1:100-1:200,
--------------------	--

Restrictions:	For Research Use only
---------------	-----------------------

Handling

Format:	Liquid
---------	--------

Buffer:	Supplied at 1.0 mg/mL in phosphate buffered saline (without Mg ²⁺ and Ca ²⁺), pH 7.4, 150 mM NaCl, 0.02 % sodium azide and 50 % glycerol.
---------	--

Preservative:	Sodium azide
---------------	--------------

Precaution of Use:	This product contains Sodium azide: a POISONOUS AND HAZARDOUS SUBSTANCE which
--------------------	---

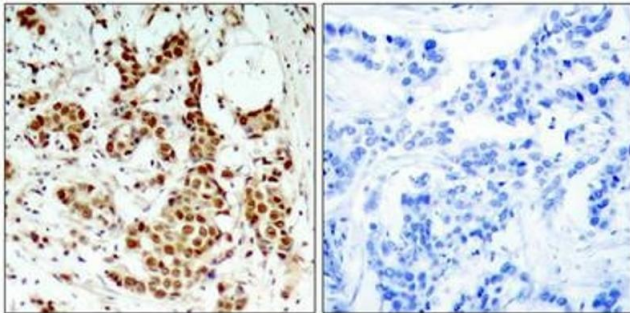
Handling

should be handled by trained staff only.

Storage: -20 °C,-80 °C

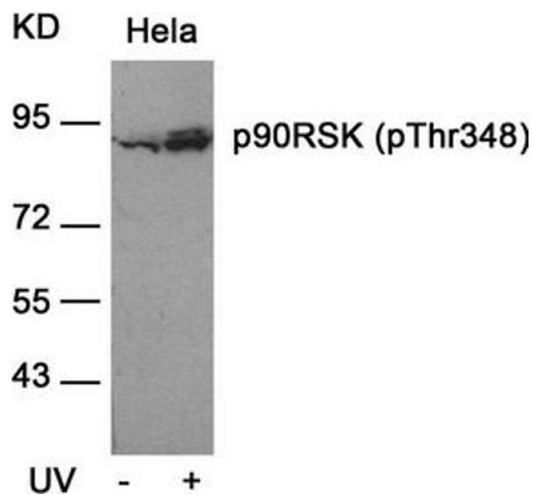
Storage Comment: Upon receipt, store at -20°C or -80°C. Avoid repeated freeze.

Images



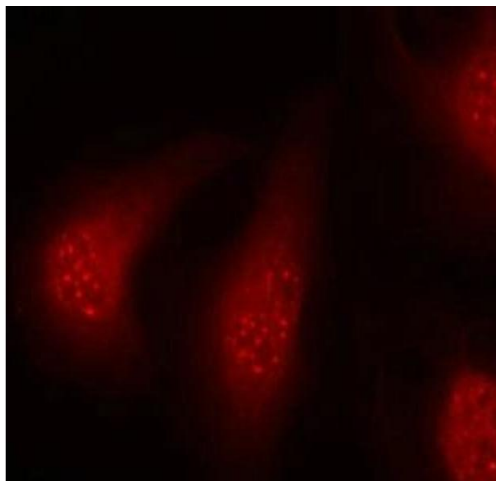
Immunohistochemistry

Image 1. Immunohistochemical analysis of paraffin-embedded human breast carcinoma tissue using p90RSK(Phospho-Thr348) Antibody(left) or the same antibody preincubated with blocking peptide(right).



Western Blotting

Image 2. Western blot analysis of extracts from HeLa cells untreated or treated with UV using p90RSK(Phospho-Thr348) Antibody.



Immunofluorescence

Image 3. Immunofluorescence staining of methanol-fixed HeLa cells using p90RSK(Phospho-Thr348) Antibody.