

Datasheet for ABIN7138848
anti-ELK1 antibody (pThr417)[Go to Product page](#)

2 Images

Overview

Quantity:	100 µL
Target:	ELK1
Binding Specificity:	pThr417
Reactivity:	Human
Host:	Rabbit
Clonality:	Polyclonal
Conjugate:	This ELK1 antibody is un-conjugated
Application:	Immunohistochemistry (IHC), ELISA, Immunofluorescence (IF)

Product Details

Immunogen:	Peptide sequence around phosphorylation site of threonine 417(L-S-T(p)-P-V) derived from Human Elk1.
Isotype:	IgG
Cross-Reactivity:	Human, Mouse, Rat
Purification:	Antibodies were produced by immunizing rabbits with synthetic phosphopeptide and KLH conjugates. Antibodies were purified by affinity-chromatography using epitope-specific phosphopeptide. Non-phospho specific antibodies were removed by chromatography using

Target Details

Target:	ELK1
Alternative Name:	ELK1 (ELK1 Products)

Target Details

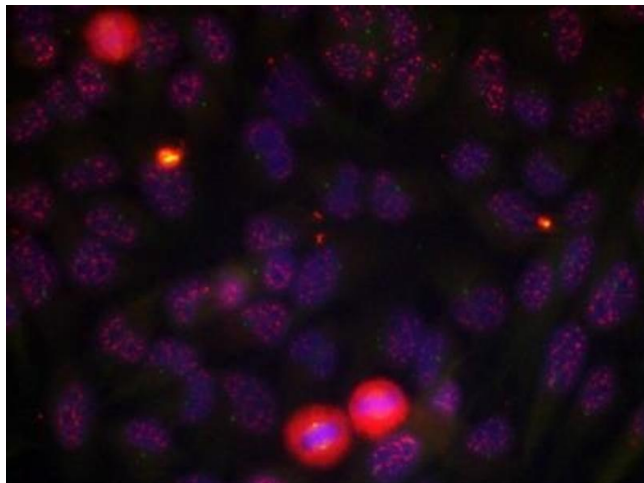
Background:	<p>Background:</p> <p>Stimulates transcription. Binds to purine-rich DNA sequences. Can form a ternary complex with the serum response factor and the ETS and SRF motifs of the fos serum response element.</p> <p>Yang S.-H., Sharrocks A.D.EMBO J. 24:2161-2171(2005)</p> <p>Zhang L., Yang S.H., Sharrocks A.D.Mol. Cell. Biol. 27:2861-2869(2007)</p> <p>Aliases: ELK 1 antibody; Elk1 antibody; ELK1 member of ETS oncogene family antibody; ELK1 protein antibody; ELK1; ETS transcription factor antibody; ELK1_HUMAN antibody; ELK2 member of ETS oncogene family antibody; ETS domain containing protein Elk 1 antibody; ETS domain containing protein Elk1 antibody; ETS domain protein Elk1 antibody; ETS domain-containing protein Elk-1 antibody; ETS like gene 1 antibody; Member of ETS oncogene family antibody; Oncogene Elk1 antibody; Tyrosine kinase (ELK1) oncogene antibody</p>
UniProt:	P19419
Pathways:	MAPK Signaling , Neurotrophin Signaling Pathway , Activation of Innate immune Response , Toll-Like Receptors Cascades , Signaling of Hepatocyte Growth Factor Receptor , BCR Signaling

Application Details

Application Notes:	IHC:1:50-1:100, IF:1:100-1:200,
Restrictions:	For Research Use only

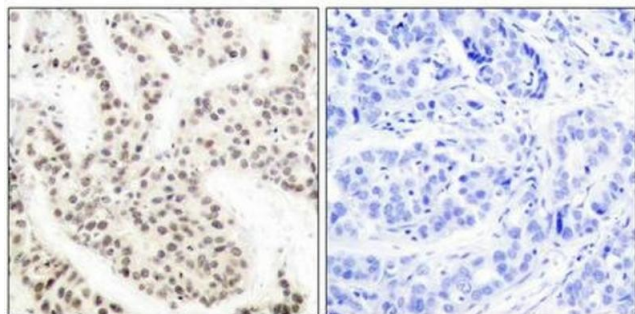
Handling

Format:	Liquid
Buffer:	Supplied at 1.0 mg/mL in phosphate buffered saline (without Mg2+ and Ca2+), pH 7.4, 150 mM NaCl, 0.02 % sodium azide and 50 % glycerol.
Preservative:	Sodium azide
Precaution of Use:	This product contains Sodium azide: a POISONOUS AND HAZARDOUS SUBSTANCE which should be handled by trained staff only.
Storage:	-20 °C,-80 °C
Storage Comment:	Upon receipt, store at -20°C or -80°C. Avoid repeated freeze.



Immunofluorescence

Image 1. Immunofluorescence staining of methanol-fixed HeLa cells using Elk-1 (phospho-Thr417) antibody.



Immunohistochemistry

Image 2. Immunohistochemical analysis of paraffin-embedded human breast carcinoma tissue using Elk-1 (phospho-Thr417) antibody.