

Datasheet for ABIN7138850
anti-PAK1/2/3 antibody (pThr423)[Go to Product page](#)

2 Images

Overview

Quantity:	100 µL
Target:	PAK1/2/3
Binding Specificity:	pThr423
Reactivity:	Human
Host:	Rabbit
Clonality:	Polyclonal
Conjugate:	This PAK1/2/3 antibody is un-conjugated
Application:	Immunohistochemistry (IHC), ELISA, Immunofluorescence (IF)

Product Details

Immunogen:	Peptide sequence around phosphorylation site of threonine 423 /402/421 (R-S-T(p)-M-V) derived from Human PAK1/PAK2/PAK3.
Isotype:	IgG
Cross-Reactivity:	Human, Mouse, Rat
Purification:	Antibodies were produced by immunizing rabbits with synthetic phosphopeptide and KLH conjugates. Antibodies were purified by affinity-chromatography using epitope-specific phosphopeptide. Non-phospho specific antibodies were removed by chromatography using

Target Details

Target:	PAK1/2/3
Alternative Name:	PAK1/PAK2/PAK3 (PAK1/2/3 Products)

Target Details

Background:

Background:

The activated kinase acts on a variety of targets. Likely to be the GTPase effector that links the Rho-related GTPases to the JNK MAP kinase pathway. Activated by CDC42 and RAC1. Involved in dissolution of stress fibers and reorganization of focal complexes. Involved in regulation of microtubule biogenesis through phosphorylation of TBCB. Activity is inhibited in cells undergoing apoptosis, potentially due to binding of CDC2L1 and CDC2L2.

Parsons M, et al. (2005) Mol Cell Biol , 25:1680-1695.

Jung JH, et al. (2005) J Biol Chem, 280:40025-40031.

Lampugnani MG, et al. (2002) Mol Biol Cell , 13: 1175-1189

Wang RA, et al. (2002) EMBO J, 21: 5437 - 5447.

Aliases: ADRB2 antibody, Alpha PAK antibody, Alpha-PAK antibody, MGC130000 antibody, MGC130001 antibody, p21 activated kinase 1 antibody, p21 protein (Cdc42/Rac) activated kinase 1 antibody, p21-activated kinase 1 antibody, p21/Cdc42/Rac1 activated kinase 1 (yeast Ste20 related) antibody, p21/Cdc42/Rac1-activated kinase 1 (STE20 homolog, yeast) antibody, p65 PAK antibody, p65-PAK antibody, P68-PAK antibody, PAK alpha antibody, PAK-1 antibody, Pak1 antibody, PAK1_HUMAN antibody, Paka antibody, PAKalpha antibody, Protein kinase MUK2 antibody, Rac/p21-activated kinase antibody, Serine/threonine-protein kinase PAK 1 antibody, STE20 homolog yeast antibody

UniProt:

[Q13153](#)

Application Details

Application Notes:

IHC:1:50-1:100, IF:1:100-1:200,

Restrictions:

For Research Use only

Handling

Format:

Liquid

Buffer:

Supplied at 1.0 mg/mL in phosphate buffered saline (without Mg²⁺ and Ca²⁺), pH 7.4, 150 mM NaCl, 0.02 % sodium azide and 50 % glycerol.

Preservative:

Sodium azide

Precaution of Use:

This product contains Sodium azide: a POISONOUS AND HAZARDOUS SUBSTANCE which should be handled by trained staff only.

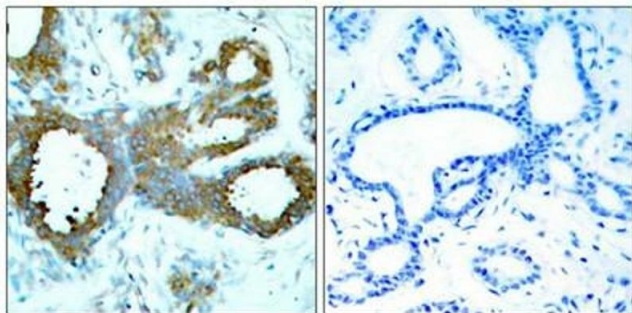
Storage:

-20 °C,-80 °C

Handling

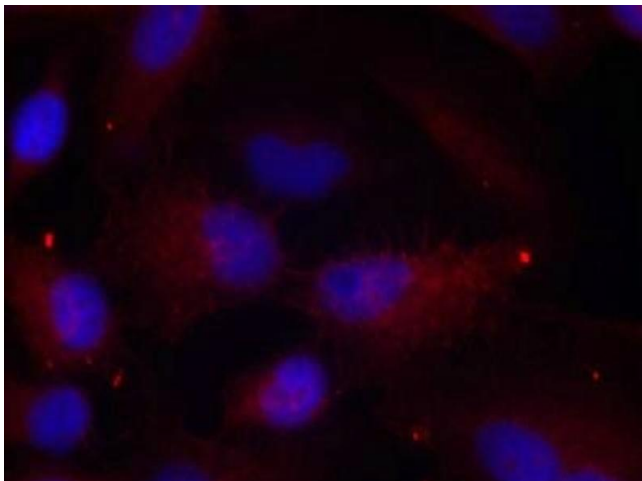
Storage Comment: Upon receipt, store at -20°C or -80°C. Avoid repeated freeze.

Images



Immunohistochemistry

Image 1. Immunohistochemical analysis of paraffin-embedded human breast carcinoma tissue using PAK1/PAK2/PAK3(Phospho-Thr423/Thr402/Thr421) Antibody(left) or the same antibody preincubated with blocking peptide(right).



Immunofluorescence

Image 2. Immunofluorescence staining of methanol-fixed HeLa cells using PAK1/PAK2/PAK3(Phospho-Thr423/Thr402/Thr421) Antibody.