

Datasheet for ABIN7138853  
**anti-EIF2AK2 antibody (pThr446)**[Go to Product page](#)

## 3 Images

## Overview

Quantity:	100 µL
Target:	EIF2AK2
Binding Specificity:	pThr446
Reactivity:	Human
Host:	Rabbit
Clonality:	Polyclonal
Conjugate:	This EIF2AK2 antibody is un-conjugated
Application:	Western Blotting (WB), Immunohistochemistry (IHC), ELISA, Immunofluorescence (IF)

## Product Details

Immunogen:	Peptide sequence around phosphorylation site of threonine 446 (K-R-T(p)-R-S) derived from Human PKR.
Isotype:	IgG
Cross-Reactivity:	Human, Mouse
Purification:	Antibodies were produced by immunizing rabbits with synthetic phosphopeptide and KLH conjugates. Antibodies were purified by affinity-chromatography using epitope-specific phosphopeptide. Non-phospho specific antibodies were removed by chromatography using

## Target Details

Target:	EIF2AK2
Alternative Name:	EIF2AK2 ( <a href="#">EIF2AK2 Products</a> )

## Target Details

Background:	<p>Background:</p> <p>Following activation by double-stranded RNA in the presence of ATP, the kinase becomes autophosphorylated and can catalyze the phosphorylation of the translation initiation factor EIF2S1, which leads to an inhibition of the initiation of protein synthesis. Double-stranded RNA is generated during the course of a viral infection.</p> <p>Abujiang Pataer, et.al. (2002) Cancer Res, 62: 2239.</p> <p>K. D. Ryman, et.al. (2005) J. Virol, 79: 1487 - 1499.</p> <p>Susana Guerra, et.al. (2006) J. Biol. Chem, 281: 18734 - 18745.</p> <p>Aliases: Double stranded RNA activated protein kinase antibody, E2AK2_HUMAN antibody, eIF-2A protein kinase 2 antibody, EIF2AK1 antibody, EIF2AK2 antibody, Eukaryotic translation initiation factor 2 alpha kinase 2 antibody, Eukaryotic translation initiation factor 2-alpha kinase 2 antibody, HGNC:9437 antibody, Interferon induced double stranded RNA activated protein kinase antibody, Interferon inducible eIF2 alpha kinase antibody, Interferon inducible RNA dependent protein kinase antibody, Interferon-induced, double-stranded RNA-activated protein kinase antibody, Interferon-inducible RNA-dependent protein kinase antibody, MGC126524 antibody, P1/eIF-2A protein kinase antibody, P1/eIF2A protein kinase antibody, p68 kinase antibody, PKR antibody, PPP1R83 antibody, PRKR antibody, Protein kinase interferon inducible double stranded RNA dependent antibody, Protein kinase RNA activated antibody, Protein kinase RNA-activated antibody, Protein phosphatase 1 regulatory subunit 83 antibody, Serine/threonine protein kinase TIK antibody, Tyrosine protein kinase EIF2AK2 antibody</p>
UniProt:	<a href="#">P19525</a>
Pathways:	<a href="#">DNA Damage Repair</a> , <a href="#">ER-Nucleus Signaling</a> , <a href="#">Hepatitis C</a>

## Application Details

Application Notes:	WB:1:500-1:1000, IHC:1:50-1:100, IF:1:100-1:200,
Restrictions:	For Research Use only

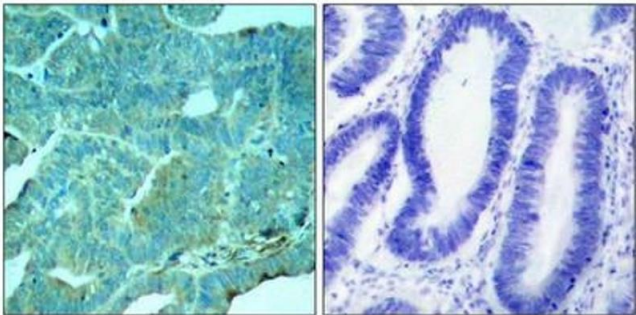
## Handling

Format:	Liquid
Buffer:	Supplied at 1.0 mg/mL in phosphate buffered saline (without Mg <sup>2+</sup> and Ca <sup>2+</sup> ), pH 7.4, 150 mM NaCl, 0.02 % sodium azide and 50 % glycerol.
Preservative:	Sodium azide

Handling

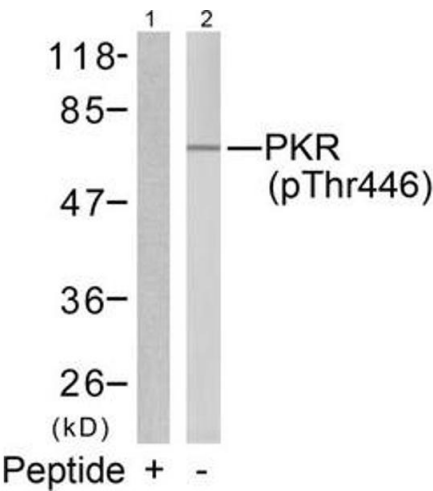
Precaution of Use:	This product contains Sodium azide: a POISONOUS AND HAZARDOUS SUBSTANCE which should be handled by trained staff only.
Storage:	-20 °C,-80 °C
Storage Comment:	Upon receipt, store at -20°C or -80°C. Avoid repeated freeze.

Images



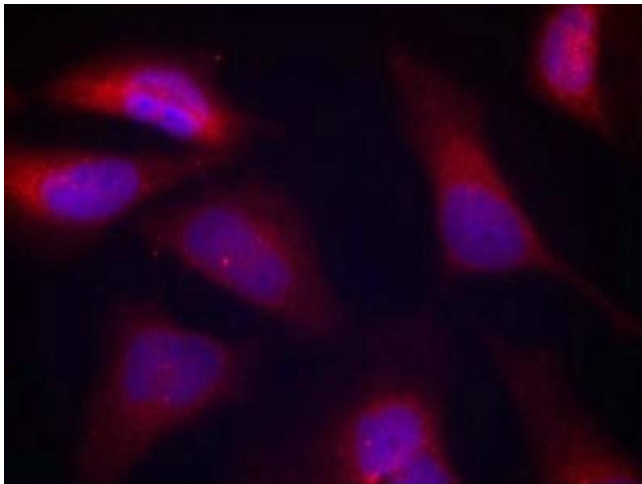
Immunohistochemistry

**Image 1.** Immunohistochemical analysis of paraffin-embedded human colon carcinoma tissue using PKR(Phospho-Thr446) Antibody(left) or the same antibody preincubated with blocking peptide(right).



Western Blotting

**Image 2.** Western blot analysis of extracts from K562 cells using PKR(Phospho-Thr446) Antibody(Lane 2) and the same antibody preincubated with blocking peptide(Lane1).



#### Immunofluorescence

**Image 3.** Immunofluorescence staining of methanol-fixed HeLa cells using PKR(Phospho-Thr446) Antibody.