

Datasheet for ABIN7138858
anti-CAD antibody (pThr456)[Go to Product page](#)

1 Image

Overview

Quantity:	100 µL
Target:	CAD
Binding Specificity:	pThr456
Reactivity:	Human
Host:	Rabbit
Clonality:	Polyclonal
Conjugate:	This CAD antibody is un-conjugated
Application:	Immunohistochemistry (IHC), ELISA

Product Details

Immunogen:	Peptide sequence around phosphorylation site of threonine 456 (P-I-T(p)-P-H) derived from Human CAD.
Isotype:	IgG
Cross-Reactivity:	Human, Mouse
Purification:	Antibodies were produced by immunizing rabbits with synthetic phosphopeptide and KLH conjugates. Antibodies were purified by affinity-chromatography using epitope-specific phosphopeptide. Non-phospho specific antibodies were removed by chromatography using

Target Details

Target:	CAD
Alternative Name:	CAD (CAD Products)

Target Details

Background:

Background:

The de novo synthesis of pyrimidine nucleotides is required for mammalian cells to proliferate. This gene encodes a trifunctional protein which is associated with the enzymatic activities of the first 3 enzymes in the 6-step pathway of pyrimidine biosynthesis: carbamoylphosphate synthetase (CPS II), aspartate transcarbamoylase, and dihydroorotase. This protein is regulated by the mitogen-activated protein kinase (MAPK) cascade, which indicates a direct link between activation of the MAPK cascade and de novo biosynthesis of pyrimidine nucleotides.

Iwahana H., Biochem. Biophys. Res. Commun. 219:249-255(1996).

Davidson J.N., DNA Cell Biol. 9:667-676(1990).

Olsen J.V., Cell 127:635-648(2006).

Aliases: CAD antibody, CAD protein [Includes: Glutamine-dependent carbamoyl-phosphate synthase antibody, EC 6.3.5.5), Aspartate carbamoyltransferase antibody, EC 2.1.3.2), Dihydroorotase antibody, EC 3.5.2.3)] antibody

UniProt:

[P27708](#)

Pathways:

[Production of Molecular Mediator of Immune Response](#), [Ribonucleoside Biosynthetic Process](#)

Application Details

Application Notes:

IHC:1:50-1:100,

Restrictions:

For Research Use only

Handling

Format:

Liquid

Buffer:

Rabbit IgG in phosphate buffered saline (without Mg²⁺ and Ca²⁺), pH 7.4, 150 mM NaCl, 0.02 % sodium azide and 50 % glycerol.

Preservative:

Sodium azide

Precaution of Use:

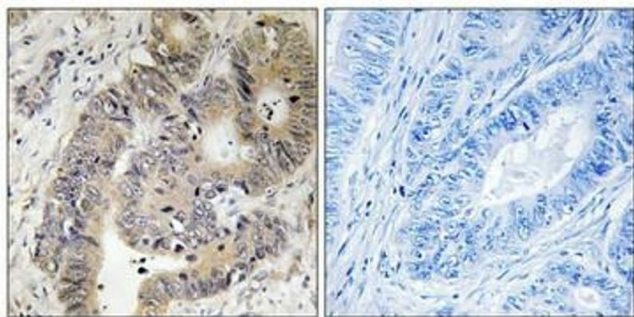
This product contains Sodium azide: a POISONOUS AND HAZARDOUS SUBSTANCE which should be handled by trained staff only.

Storage:

-20 °C, -80 °C

Storage Comment:

Upon receipt, store at -20°C or -80°C. Avoid repeated freeze.



Immunohistochemistry

Image 1. Immunohistochemical analysis of paraffin-embedded human colon carcinoma tissue using CAD (Phospho-Thr456) antibody (left) or the same antibody preincubated with blocking peptide (right).