

Datasheet for ABIN7138868
anti-RPS6KA1 antibody (pThr573)



[Go to Product page](#)

2 Images

Overview

Quantity:	100 µL
Target:	RPS6KA1
Binding Specificity:	pThr573
Reactivity:	Human
Host:	Rabbit
Clonality:	Polyclonal
Conjugate:	This RPS6KA1 antibody is un-conjugated
Application:	Western Blotting (WB), ELISA, Immunohistochemistry (IHC)

Product Details

Immunogen:	Peptide sequence around phosphorylation site of threonine 573(L-M-T(p)-P-C) derived from Human p90 RSK.
Isotype:	IgG
Cross-Reactivity:	Human, Mouse, Rat
Purification:	Antibodies were produced by immunizing rabbits with synthetic phosphopeptide and KLH conjugates. Antibodies were purified by affinity-chromatography using epitope-specific phosphopeptide. Non-phospho specific antibodies were removed by chromatography using

Target Details

Target:	RPS6KA1
Alternative Name:	RPS6KA1 (RPS6KA1 Products)

Target Details

Background:

Background:

Serine/threonine-protein kinase that acts downstream of ERK (MAPK1/ERK2 and MAPK3/ERK1) signaling and mediates mitogenic and stress-induced activation of the transcription factors CREB1, ETV1/ER81 and NR4A1/NUR77, regulates translation through RPS6 and EIF4B phosphorylation, and mediates cellular proliferation, survival, and differentiation by modulating mTOR signaling and repressing pro-apoptotic function of BAD and DAPK1. In fibroblast, is required for EGF-stimulated phosphorylation of CREB1, which results in the subsequent transcriptional activation of several immediate-early genes.

Eiichi Takahashi, J. Biol. Chem., Jul 1999, 274: 20206.

Ye Zhang, J. Biol. Chem., May 2002, 277: 19042 - 19048.

Ganesh R. Panta, Mol. Cell. Biol., Mar 2004, 24: 1823 - 1835.

Aliases: 90 kDa ribosomal protein S6 kinase 1 antibody, dJ590P13.1 (ribosomal protein S6 kinase, 90kD, polypeptide 1 antibody, dJ590P13.1 antibody, EC 2.7.11.1 antibody, HU 1 antibody, HU1 antibody, KS6A1_HUMAN antibody, MAP kinase activated protein kinase 1a antibody, MAP kinase-activated protein kinase 1a antibody, MAPK-activated protein kinase 1a antibody, MAPKAP kinase 1a antibody, MAPKAPK-1a antibody, MAPKAPK1A antibody, MGC79981 antibody, Mitogen-activated protein kinase-activated protein kinase 1A antibody, OTTHUMP00000004113 antibody, p90 RSK1 antibody, p90-RSK 1 antibody, p90rsk antibody, p90RSK1 antibody, p90S6K antibody, pp90RSK1 antibody, Ribosomal protein S6 kinase 90kD 1 antibody, Ribosomal protein S6 kinase 90kD polypeptide 1 antibody, Ribosomal protein S6 kinase 90 kDa polypeptide 1 antibody, Ribosomal protein S6 kinase alpha 1 antibody, Ribosomal protein S6 kinase alpha-1 antibody, Ribosomal protein S6 kinase polypeptide 1 antibody, Ribosomal S6 kinase 1 antibody, RPS6K1 alpha antibody, rps6ka antibody, Rps6ka1 antibody, RSK 1 antibody, RSK 1 p90 antibody, RSK antibody, RSK-1 antibody, RSK1 antibody, RSK1p90 antibody, S6K alpha 1 antibody, S6K-alpha-1 antibody

UniProt:

[Q15418](#)

Pathways:

[MAPK Signaling](#), [Neurotrophin Signaling Pathway](#), [Activation of Innate immune Response](#), [Toll-Like Receptors Cascades](#)

Application Details

Application Notes:

WB:1:500-1:1000, IHC:1:50-1:100,

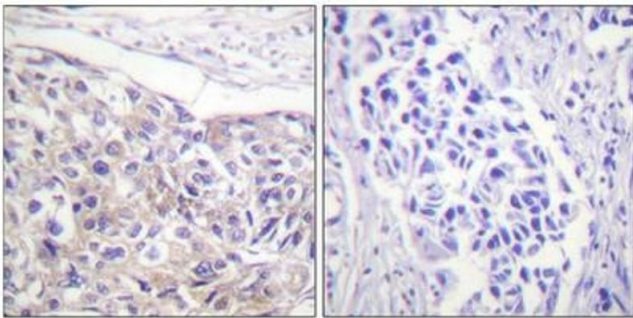
Restrictions:

For Research Use only

Handling

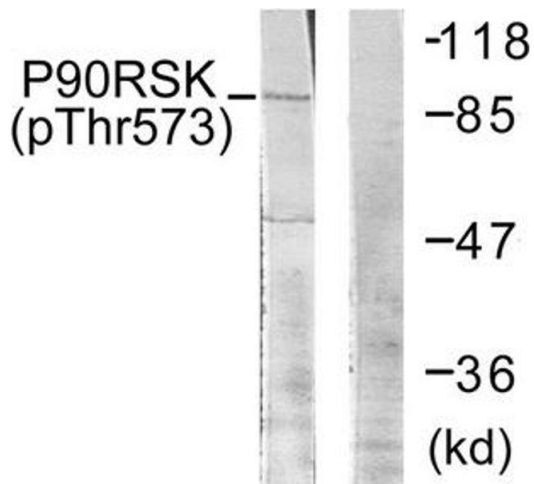
Format:	Liquid
Buffer:	Rabbit IgG in phosphate buffered saline (without Mg ²⁺ and Ca ²⁺), pH 7.4, 150 mM NaCl, 0.02 % sodium azide and 50 % glycerol.
Preservative:	Sodium azide
Precaution of Use:	This product contains Sodium azide: a POISONOUS AND HAZARDOUS SUBSTANCE which should be handled by trained staff only.
Storage:	-20 °C,-80 °C
Storage Comment:	Upon receipt, store at -20°C or -80°C. Avoid repeated freeze.

Images



Immunohistochemistry

Image 1. Immunohistochemical analysis of paraffin-embedded human breast carcinoma tissue using p90 RSK (Phospho-Thr573) antibody (left) or the same antibody preincubated with blocking peptide (right).



Western Blotting

Image 2. Western blot analysis of extracts from 293 cells treated with UV using p90 RSK (Phospho-Thr573) Antibody. The lane on the right is treated with the antigen-specific peptide.