

Datasheet for ABIN7138878  
**anti-ATF2 antibody (pThr73)**

## 4 Images

[Go to Product page](#)

## Overview

Quantity:	100 µL
Target:	ATF2
Binding Specificity:	pThr73
Reactivity:	Human
Host:	Rabbit
Clonality:	Polyclonal
Conjugate:	This ATF2 antibody is un-conjugated
Application:	Western Blotting (WB), Immunohistochemistry (IHC), ELISA, Immunofluorescence (IF)

## Product Details

Immunogen:	Peptide sequence around phosphorylation site of threonine 73 or 55 (T-P-T(p)-R-F) derived from Human ATF2.
Isotype:	IgG
Cross-Reactivity:	Human, Monkey, Mouse, Rat
Purification:	Antibodies were produced by immunizing rabbits with synthetic phosphopeptide and KLH conjugates. Antibodies were purified by affinity-chromatography using epitope-specific phosphopeptide. Non-phospho specific antibodies were removed by chromatography using

## Target Details

Target:	ATF2
Alternative Name:	ATF2 ( <a href="#">ATF2 Products</a> )

## Target Details

### Background:

### Background:

Transcriptional activator, probably constitutive, which binds to the cAMP-responsive element (CRE) (consensus: 5'-GTGACGT[AC][AG]-3'), a sequence present in many viral and cellular promoters. Interaction with JUN redirects JUN to bind to CREs preferentially over the 12-O-tetradecanoylphorbol-13-acetate response elements (TREs) as part of an ATF2-c-Jun complex.

Beausoleil S A, et al. (2004) Proc Natl Acad Sci U S A. 101(33): 12130-12135.

Abdel-Hafiz H A, et al. (1992) Mol Endocrinol. 6: 2079-2089.

Gupta S, et al. (1995) Science. 267: 389-393.

Van Dam H, et al. (1995) EMBO J. 14(8): 1798-1811.

Livingstone C, et al. (1995) EMBO J. 14: 1785-1797.

Aliases: Activating transcription factor 2 antibody, Activating transcription factor 2 splice variant ATF2 var2 antibody, ATF 2 antibody, Atf-2 antibody, Atf2 antibody, ATF2 protein antibody, ATF2\_HUMAN antibody, cAMP Response Element Binding Protein 2 antibody, cAMP response element binding protein CRE BP1 antibody, cAMP response element-binding protein CRE-BP1 antibody, cAMP responsive element binding protein 2, formerly antibody, cAMP-dependent transcription factor ATF-2 antibody, cAMP-responsive element-binding protein 2 antibody, CRE BP1 antibody, CRE-BP antibody, CREB 2 antibody, CREB-2 antibody, CREB2 antibody, CREBP1 antibody, Cyclic AMP dependent transcription factor ATF 2 antibody, Cyclic AMP-dependent transcription factor ATF-2 antibody, Cyclic AMP-responsive element-binding protein 2 antibody, D130078H02Rik antibody, D18875 antibody, HB 16 antibody, HB16 antibody, Histone acetyltransferase ATF2 antibody, MGC105211 antibody, MGC105222 antibody, MGC111558 antibody, MGC142504 antibody, mXBP antibody, MXBP protein antibody, Tg(Gzma-Klra1)7Wum antibody, TREB 7 antibody, TREB7 antibody

### UniProt:

[P15336](#)

### Pathways:

[MAPK Signaling](#), [RTK Signaling](#), [Thyroid Hormone Synthesis](#), [Activation of Innate immune Response](#), [Chromatin Binding](#), [Myometrial Relaxation and Contraction](#), [Synaptic Membrane](#), [Tube Formation](#), [Toll-Like Receptors Cascades](#)

## Application Details

### Application Notes:

WB:1:500-1:1000, IHC:1:50-1:100, IF:1:100-1:200,

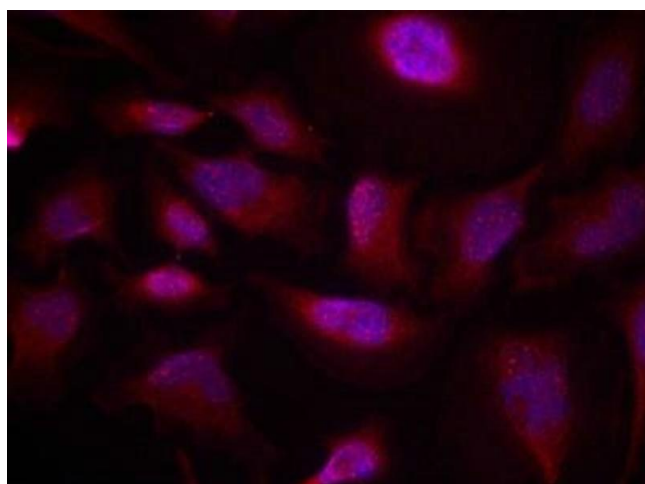
### Restrictions:

For Research Use only

## Handling

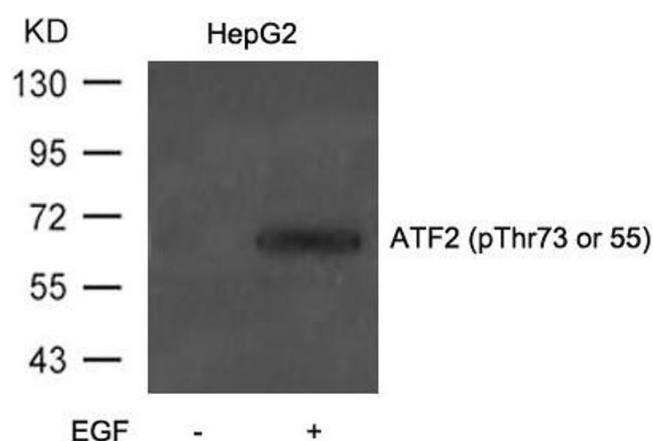
Format:	Liquid
Buffer:	Supplied at 1.0 mg/mL in phosphate buffered saline (without Mg <sup>2+</sup> and Ca <sup>2+</sup> ), pH 7.4, 150 mM NaCl, 0.02 % sodium azide and 50 % glycerol.
Preservative:	Sodium azide
Precaution of Use:	This product contains Sodium azide: a POISONOUS AND HAZARDOUS SUBSTANCE which should be handled by trained staff only.
Storage:	-20 °C,-80 °C
Storage Comment:	Upon receipt, store at -20°C or -80°C. Avoid repeated freeze.

## Images



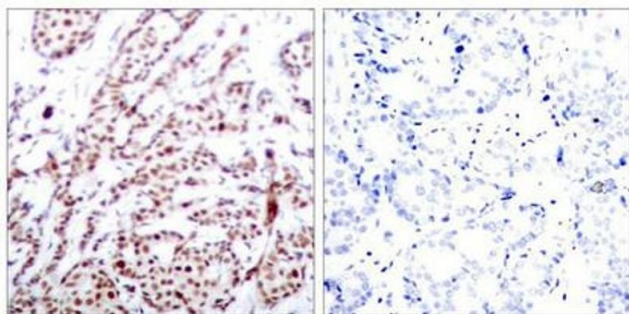
### Immunofluorescence

**Image 1.** Immunofluorescence staining of methanol-fixed Hela cells using ATF2(Phospho-Thr73 or 55) Antibody.



### Western Blotting

**Image 2.** Western blot analysis of extracts from HepG2 cells untreated or treated with EGF using ATF2(Phospho-Thr71 or 53) Antibody.



#### Immunohistochemistry

**Image 3.** Immunohistochemical analysis of paraffin-embedded human breast carcinoma tissue using ATF2(Phospho-Thr73 or 55) Antibody(left) or the same antibody preincubated with blocking peptide(right).

Please check the [product details page](#) for more images. Overall 4 images are available for ABIN7138878.