

Datasheet for ABIN7138882
anti-ITGB1 antibody (pThr789)



[Go to Product page](#)

2 Images

Overview

Quantity:	100 µL
Target:	ITGB1
Binding Specificity:	pThr789
Reactivity:	Human
Host:	Rabbit
Clonality:	Polyclonal
Conjugate:	This ITGB1 antibody is un-conjugated
Application:	Western Blotting (WB), ELISA, Immunohistochemistry (IHC)

Product Details

Immunogen:	Peptide sequence around phosphorylation site of threonine 789(V-E-T(p)-V-V) derived from Human Integrin beta1 .
Isotype:	IgG
Cross-Reactivity:	Human, Mouse, Rat
Purification:	Antibodies were produced by immunizing rabbits with synthetic phosphopeptide and KLH conjugates. Antibodies were purified by affinity-chromatography using epitope-specific phosphopeptide. Non-phospho specific antibodies were removed by chromatography using

Target Details

Target:	ITGB1
Alternative Name:	ITGB1 (ITGB1 Products)

Target Details

Background:	<p>Background: Integrins alpha-1/beta-1, alpha-2/beta-1, alpha-10/beta-1 and alpha-11/beta-1 are receptors for collagen. Integrins alpha-1/beta-1 and alpha-2/beta-2 recognize the proline-hydroxylated sequence G-F-P-G-E-R in collagen. Integrins alpha-2/beta-1, alpha-3/beta-1, alpha-4/beta-1, alpha-5/beta-1, alpha-8/beta-1, alpha-10/beta-1, alpha-11/beta-1 and alpha-V/beta-1 are receptors for fibronectin. Alpha-4/beta-1 recognizes one or more domains within the alternatively spliced CS-1 and CS-5 regions of fibronectin. Integrin alpha-5/beta-1 is a receptor for fibrinogen. Integrin alpha-1/beta-1, alpha-2/beta-1, alpha-6/beta-1 and alpha-7/beta-1 are receptors for laminin. Integrin alpha-4/beta-1 is a receptor for VCAM1. It recognizes the sequence Q-I-D-S in VCAM1. Integrin alpha-9/beta-1 is a receptor for VCAM1, cytotactin and osteopontin. It recognizes the sequence A-E-I-D-G-I-E-L in cytotactin. Integrin alpha-3/beta-1 is a receptor for epiligrin, thrombospondin and CSPG4. Alpha-3/beta-1 may mediate with LGALS3 the stimulation by CSPG4 of endothelial cells migration. Integrin alpha-V/beta-1 is a receptor for vitronectin. Beta-1 integrins recognize the sequence R-G-D in a wide array of ligands. Isoform beta-1B interferes with isoform beta-1A resulting in a dominant negative effect on cell adhesion and migration (in vitro). In case of HIV-1 infection, the interaction with extracellular viral Tat protein seems to enhance angiogenesis in Kaposi's sarcoma lesions. When associated with alpha-7/beta-1 integrin, regulates cell adhesion and laminin matrix deposition. Involved in promoting endothelial cell motility and angiogenesis. May be involved in up-regulation of the activity of kinases such as PKC via binding to KRT1. Together with KRT1 and GNB2L1/RACK1, serves as a platform for SRC activation or inactivation. Plays a mechanistic adhesive role during telophase, required for the successful completion of cytokinesisArgaves W.S., J. Cell Biol. 105:1183-1190(1987).Balzac F., J. Cell Biol. 121:171-178(1993).Balzac F., J. Cell Biol. 127:557-565(1994).</p> <p>Aliases: beta1 integrin antibody, CD_antigen=CD29 antibody, CD29 antibody, Fibronectin receptor subunit beta antibody, FNBR antibody, Glycoprotein IIa antibody, GP IIa antibody, GPIIA antibody, Integrin beta-1 antibody, Integrin subunit beta 1 antibody, integrin VLA-4 beta subunit antibody, Integrin, beta 1 (fibronectin receptor, beta polypeptide, antigen CD29 includes MDF2, MSK12) antibody, ITB1_HUMAN antibody, ITGB1 antibody, MDF2 antibody, MSK12 antibody, OTTHUMP00000019420 antibody, very late activation protein antibody, Very late activation protein, beta polypeptide antibody, VLA BETA antibody, VLA-4 subunit beta antibody, VLA-BETA antibody, VLAB antibody, VLABeta antibody</p>
UniProt:	P05556
Pathways:	Cell-Cell Junction Organization , Regulation of G-Protein Coupled Receptor Protein Signaling , CXCR4-mediated Signaling Events , Signaling of Hepatocyte Growth Factor Receptor , Integrin Complex , SARS-CoV-2 Protein Interactome

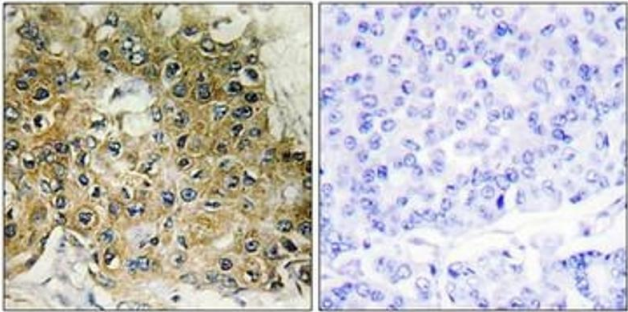
Application Details

Application Notes:	WB:1:500-1:1000, IHC:1:50-1:100,
Restrictions:	For Research Use only

Handling

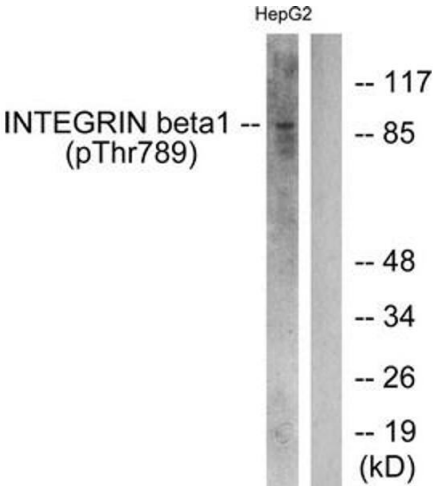
Format:	Liquid
Buffer:	Rabbit IgG in phosphate buffered saline (without Mg2+ and Ca2+), pH 7.4, 150 mM NaCl, 0.02 % sodium azide and 50 % glycerol.
Preservative:	Sodium azide
Precaution of Use:	This product contains Sodium azide: a POISONOUS AND HAZARDOUS SUBSTANCE which should be handled by trained staff only.
Storage:	-20 °C,-80 °C
Storage Comment:	Upon receipt, store at -20°C or -80°C. Avoid repeated freeze.

Images



Immunohistochemistry

Image 1. Immunohistochemical analysis of paraffin-embedded human breast carcinoma tissue using Integrin β 1 (Phospho-Thr789) antibody (left) or the same antibody preincubated with blocking peptide (right).



Western Blotting

Image 2. Western blot analysis of extracts from HepG2 cells treated with Ca²⁺ using Integrin β1 (Phospho-Thr789) Antibody. The lane on the right is treated with the antigen-specific peptide.