

Datasheet for ABIN7138888
anti-BLM antibody (pThr99)[Go to Product page](#)

2 Images

Overview

Quantity:	100 µL
Target:	BLM
Binding Specificity:	pThr99
Reactivity:	Human
Host:	Rabbit
Clonality:	Polyclonal
Conjugate:	This BLM antibody is un-conjugated
Application:	Western Blotting (WB), ELISA, Immunohistochemistry (IHC)

Product Details

Immunogen:	Peptide sequence around phosphorylation site of threonine 99 (Q-E-T(p)-Q-R) derived from Human Bloom Syndrome.
Isotype:	IgG
Cross-Reactivity:	Human
Purification:	Antibodies were produced by immunizing rabbits with synthetic phosphopeptide and KLH conjugates. Antibodies were purified by affinity-chromatography using epitope-specific phosphopeptide. Non-phospho specific antibodies were removed by chromatography using

Target Details

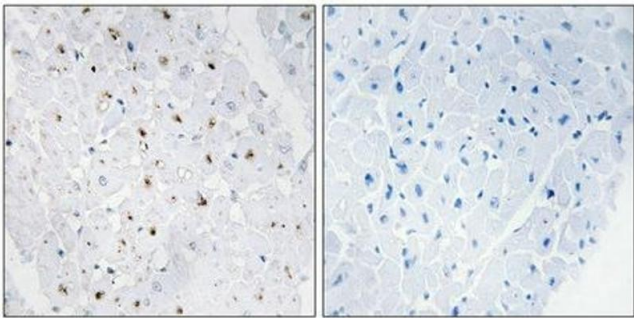
Target:	BLM
Alternative Name:	BLM (BLM Products)

Target Details

Background:	<p>Background:</p> <p>Participates in DNA replication and repair. Exhibits a magnesium-dependent ATP-dependent DNA-helicase activity that unwinds single- and double-stranded DNA in a 3'-5' direction. Involved in 5'-end resection of DNA during double-strand break (DSB) repair: unwinds DNA and recruits DNA2 which mediates the cleavage of 5'-ssDNA. Negatively regulates sister chromatid exchange (SCE).</p> <p>Ellis N.A., Cell 83:655-666(1995).</p> <p>Karow J.K., J. Biol. Chem. 272:30611-30614(1997).</p> <p>Pichierri P., EMBO J. 23:3154-3163(2004).</p> <p>Aliases: Blm antibody, BLM_HUMAN antibody, Bloom syndrome antibody, Bloom syndrome protein antibody, Bloom syndrome RecQ helicase like antibody, BS antibody, DNA helicase antibody, DNA helicase RecQ like type 2 antibody, MGC126616 antibody, MGC131618 antibody, MGC131620 antibody, RECQ 2 antibody, RECQ like antibody, RecQ like type 2 antibody, RecQ protein like 3 antibody, RecQ protein-like 3 antibody, RecQ-like type 2 antibody, RecQ2 antibody, RECQL 2 antibody, RECQL 3 antibody, RECQL2 antibody, RECQL3 antibody, type 2 antibody</p>
UniProt:	P54132
Pathways:	DNA Damage Repair

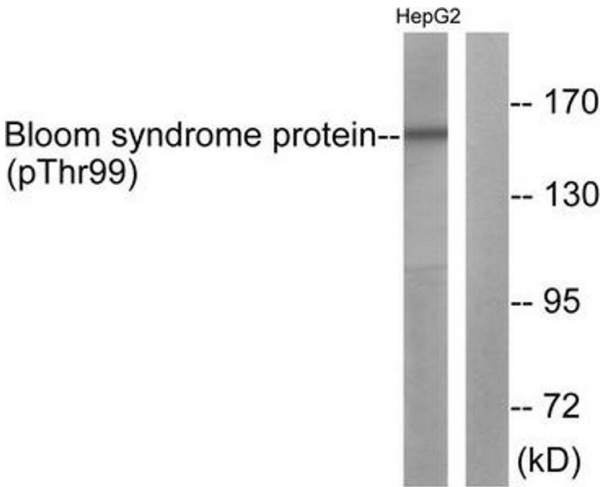
Application Details

Application Notes:	WB:1:500-1:1000, IHC:1:50-1:100,
Restrictions:	For Research Use only
Handling	
Format:	Liquid
Buffer:	Rabbit IgG in phosphate buffered saline (without Mg ²⁺ and Ca ²⁺), pH 7.4, 150 mM NaCl, 0.02 % sodium azide and 50 % glycerol.
Preservative:	Sodium azide
Precaution of Use:	This product contains Sodium azide: a POISONOUS AND HAZARDOUS SUBSTANCE which should be handled by trained staff only.
Storage:	-20 °C,-80 °C
Storage Comment:	Upon receipt, store at -20°C or -80°C. Avoid repeated freeze.



Immunohistochemistry

Image 1. Immunohistochemical analysis of paraffin-embedded human heart tissue, using Bloom Syndrome Protein (Phospho-Thr99) antibody (left) or the same antibody preincubated with blocking peptide (right).



Western Blotting

Image 2. Western blot analysis of extracts from HepG2 cells using Bloom Syndrome Protein (Phospho-Thr99) Antibody. The lane on the right is treated with the antigen-specific peptide.