

Datasheet for ABIN7138889

anti-Topoisomerase II alpha antibody (pThr1343)[Go to Product page](#)

1 Image

Overview

Quantity:	100 µL
Target:	Topoisomerase II alpha (TOP2A)
Binding Specificity:	pThr1343
Reactivity:	Human
Host:	Rabbit
Clonality:	Polyclonal
Conjugate:	This Topoisomerase II alpha antibody is un-conjugated
Application:	Western Blotting (WB), ELISA

Product Details

Immunogen:	Peptide sequence around phosphorylation site of threonine1343(E-K-T(p)-D-D) derived from Human TOP2A.
Isotype:	IgG
Cross-Reactivity:	Human
Purification:	Antibodies were produced by immunizing rabbits with synthetic phosphopeptide and KLH conjugates. Antibodies were purified by affinity-chromatography using epitope-specific phosphopeptide. Non-phospho specific antibodies were removed by chromatography using

Target Details

Target:	Topoisomerase II alpha (TOP2A)
Alternative Name:	TOP2A (TOP2A Products)

Target Details

Background:	<p>Background:</p> <p>This gene encodes a DNA topoisomerase, an enzyme that controls and alters the topologic states of DNA during transcription. This nuclear enzyme is involved in processes such as chromosome condensation, chromatid separation, and the relief of torsional stress that occurs during DNA transcription and replication. It catalyzes the transient breaking and rejoining of two strands of duplex DNA which allows the strands to pass through one another, thus altering the topology of DNA. Two forms of this enzyme exist as likely products of a gene duplication event.</p> <p>Tsai-Pflugfelder M., Proc. Natl. Acad. Sci. U.S.A. 85:7177-7181(1988).</p> <p>Wasserman R.A., Cancer Res. 53:3591-3596(1993).</p> <p>Lang A.J., Gene 221:255-266(1998).</p> <p>Aliases: alpha isozyme antibody, ATP hydrolyzing DNA topoisomerase II alfa antibody, DNA gyrase antibody, DNA topoisomerase (ATP hydrolyzing) antibody, DNA topoisomerase 2 alpha antibody, DNA topoisomerase 2-alpha antibody, DNA topoisomerase II 170 kD antibody, DNA topoisomerase II alpha isozyme antibody, DNA topoisomerase II antibody, DNA Topoisomerase2 antibody, TOP 2A antibody, TOP2 antibody, TOP2A antibody, TOP2A_HUMAN antibody, Topoisomerase DNA II alpha 170 kDa antibody, TP2A antibody</p>
UniProt:	P11388
Pathways:	Cell Division Cycle, Mitotic G1-G1/S Phases

Application Details

Application Notes:	WB:1:500-1:1000,
Restrictions:	For Research Use only

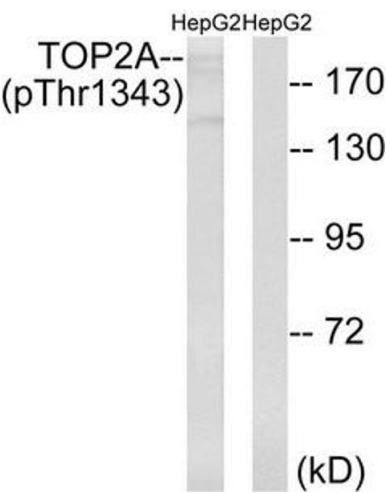
Handling

Format:	Liquid
Buffer:	Rabbit IgG in phosphate buffered saline (without Mg ²⁺ and Ca ²⁺), pH 7.4, 150 mM NaCl, 0.02 % sodium azide and 50 % glycerol.
Preservative:	Sodium azide
Precaution of Use:	This product contains Sodium azide: a POISONOUS AND HAZARDOUS SUBSTANCE which should be handled by trained staff only.

Handling

Storage:	-20 °C,-80 °C
Storage Comment:	Upon receipt, store at -20°C or -80°C. Avoid repeated freeze.

Images



Western Blotting

Image 1. Western blot analysis of extracts from HepG2 cells treated with Ca2+ using TOP2A (Phospho-Thr1343) Antibody. The lane on the right is treated with the antigen-specific peptide.