

Datasheet for ABIN7138892  
**anti-OXSR1 antibody (pThr185)**

## 2 Images

[Go to Product page](#)

## Overview

Quantity:	100 µL
Target:	OXSR1
Binding Specificity:	pThr185
Reactivity:	Human
Host:	Rabbit
Clonality:	Polyclonal
Application:	Western Blotting (WB), ELISA, Immunohistochemistry (IHC)

## Product Details

Immunogen:	Peptide sequence around phosphorylation site of threonine185(R-K-T(p)-F-V) derived from Human OSR1.
Isotype:	IgG
Cross-Reactivity:	Human, Mouse
Purification:	Antibodies were produced by immunizing rabbits with synthetic phosphopeptide and KLH conjugates. Antibodies were purified by affinity-chromatography using epitope-specific phosphopeptide. Non-phospho specific antibodies were removed by chromatography using

## Target Details

Target:	OXSR1
Alternative Name:	OXSR1 ( <a href="#">OXSR1 Products</a> )
Background:	Background:

## Target Details

Oxidative-stress responsive 1 gene is located in the vicinity of three others genes - GOLGA4, ITGA9 and HYA22 on chromosome 3. These four genes are considered to be candidate tumor suppressors. Oxidative-stress responsive 1 protein has similarity to human Ste20/oxidant stress response kinase-1 and is thought to be involved in the response to oxidative stress

Tamari M., J. Hum. Genet. 44:116-120(1999).

Kikuno R., DNA Res. 6:197-205(1999).

The MGC Project Team, Genome Res. 14:2121-2127(2004).

Aliases: 2210022N24Rik antibody, 2810422B09Rik antibody, AI462649 antibody, AW209236 antibody, KIAA1101 antibody, mKIAA1101 antibody, OSR 1 antibody, OSR1 antibody, OTTHUMP00000209062 antibody, Oxidative stress responsive 1 antibody, Oxidative stress responsive 1 protein antibody, Oxidative stress-responsive 1 protein antibody, OXSR 1 antibody, OXSR1 antibody, OXSR1\_HUMAN antibody, Serine/threonine protein kinase OSR1 antibody, Serine/threonine-protein kinase OSR1 antibody

UniProt: [O95747](#)

Pathways: [Tube Formation](#)

## Application Details

Application Notes: WB:1:500-1:1000, IHC:1:50-1:100,

Restrictions: For Research Use only

## Handling

Format: Liquid

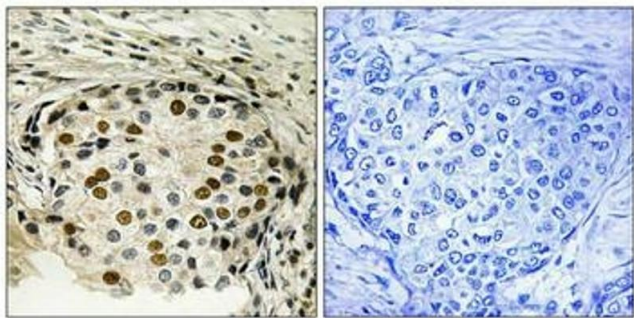
Buffer: Rabbit IgG in phosphate buffered saline (without Mg<sup>2+</sup> and Ca<sup>2+</sup>), pH 7.4, 150 mM NaCl, 0.02 % sodium azide and 50 % glycerol.

Preservative: Sodium azide

Precaution of Use: This product contains Sodium azide: a POISONOUS AND HAZARDOUS SUBSTANCE which should be handled by trained staff only.

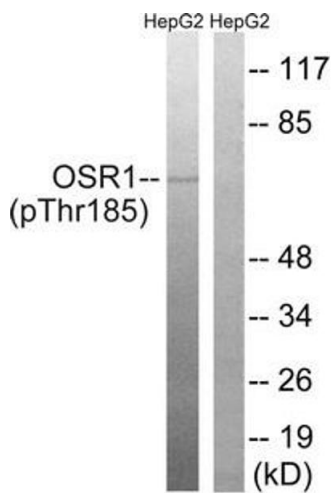
Storage: -20 °C,-80 °C

Storage Comment: Upon receipt, store at -20°C or -80°C. Avoid repeated freeze.



Immunohistochemistry

**Image 1.** Immunohistochemical analysis of paraffin-embedded human breast carcinoma tissue using OSR1 (Phospho-Thr185) antibody (left) or the same antibody preincubated with blocking peptide (right).



Western Blotting

**Image 2.** Western blot analysis of extracts from HepG2 cells treated with serum using OSR1 (Phospho-Thr185) Antibody. The lane on the right is treated with the antigen-specific peptide.