

Datasheet for ABIN7138910
anti-GRLF1 antibody (pTyr1105)[Go to Product page](#)

1 Image

Overview

Quantity:	100 µL
Target:	GRLF1
Binding Specificity:	pTyr1105
Reactivity:	Human
Host:	Rabbit
Clonality:	Polyclonal
Conjugate:	This GRLF1 antibody is un-conjugated
Application:	Western Blotting (WB), ELISA

Product Details

Immunogen:	Peptide sequence around phosphorylation site of Tyrosine 1105(N-I-Y(p)-S-V) derived from Human GRF-1.
Isotype:	IgG
Cross-Reactivity:	Human, Mouse, Rat
Purification:	Antibodies were produced by immunizing rabbits with synthetic phosphopeptide and KLH conjugates. Antibodies were purified by affinity-chromatography using epitope-specific phosphopeptide. Non-phospho specific antibodies were removed by chromatography using

Target Details

Target:	GRLF1
Alternative Name:	ARHGAP35 (GRLF1 Products)

Target Details

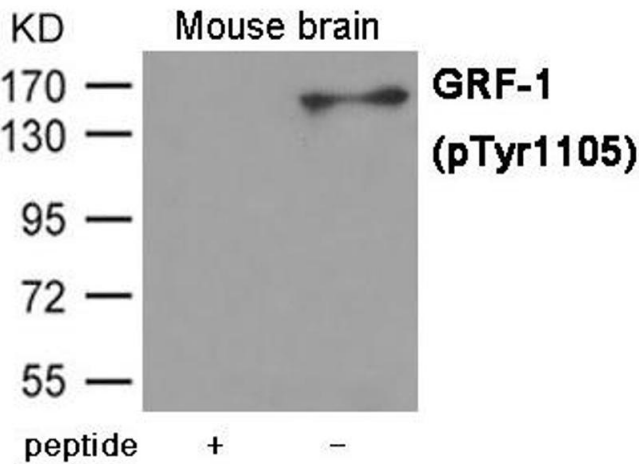
Background:	<p>Background: Represses transcription of the glucocorticoid receptor by binding to the cis-acting regulatory sequence 5'-GAGAAAAGAAACTGGAGAACTC-3'. May participate in the regulation of retinal development and degeneration. May transduce signals from p21-ras to the nucleus, acting via the ras GTPase-activating protein (GAP). May also act as a tumor suppressor.</p> <p>Aliases: ARHGAP35 antibody, GAP associated protein p190 antibody, Glucocorticoid receptor DNA binding factor 1 antibody, Glucocorticoid receptor DNA-binding factor 1 antibody, Glucocorticoid receptor repression factor 1 antibody, GRF 1 antibody, GRF-1 antibody, GRF1 antibody, GRLF 1 antibody, GRLF1 antibody, GRLF1_HUMAN antibody, KIAA1722 antibody, MGC10745 antibody, p190 A antibody, p190-A antibody, P190A antibody, P190A, rat, homolog of antibody, p190ARhoGAP antibody, p190RhoGAP antibody, Rho GAP p190A antibody, Rho GTPase-activating protein 35 antibody</p>
UniProt:	Q9NRY4
Pathways:	Tube Formation

Application Details

Application Notes:	WB:1:500-1:1000,
Restrictions:	For Research Use only

Handling

Format:	Liquid
Buffer:	Supplied at 1.0 mg/mL in phosphate buffered saline (without Mg2+ and Ca2+), pH 7.4, 150 mM NaCl, 0.02 % sodium azide and 50 % glycerol.
Preservative:	Sodium azide
Precaution of Use:	This product contains Sodium azide: a POISONOUS AND HAZARDOUS SUBSTANCE which should be handled by trained staff only.
Storage:	-20 °C,-80 °C
Storage Comment:	Upon receipt, store at -20°C or -80°C. Avoid repeated freeze.



Western Blotting

Image 1. Western blot analysis of extracts from Mouse brain tissue using GRF-1 (Phospho-Tyr1105) Antibody. The lane on the left is treated with the antigen-specific peptide.