

Datasheet for ABIN7138917
anti-MYL9 antibody (pTyr118)

2 Images

[Go to Product page](#)

Overview

Quantity:	100 µL
Target:	MYL9
Binding Specificity:	pTyr118
Reactivity:	Human
Host:	Rabbit
Clonality:	Polyclonal
Application:	Western Blotting (WB), ELISA, Immunofluorescence (IF)

Product Details

Immunogen:	Peptide sequence around phosphorylation site of tyrosine 118 (A-D-Y(p)-V-R) derived from Human MLC2.
Isotype:	IgG
Cross-Reactivity:	Human
Purification:	Antibodies were produced by immunizing rabbits with synthetic phosphopeptide and KLH conjugates. Antibodies were purified by affinity-chromatography using epitope-specific phosphopeptide. Non-phospho specific antibodies were removed by chromatography using

Target Details

Target:	MYL9
Alternative Name:	MYL9 (MYL9 Products)
Background:	Background: Myosin regulatory subunit that plays an important role in regulation of both

Target Details

smooth muscle and nonmuscle cell contractile activity via its phosphorylation. Implicated in cytokinesis, receptor capping, and cell locomotion. 1) Xia, Y. et al. c-Jun downregulation by HDAC3-dependent transcriptional repression promotes osmotic stress-induced cell apoptosis. Mol. Cell 25, 219–232 (2007).2)Vander Heiden, M. G. et al. Evidence for an alternative glycolytic pathway in rapidly proliferating cells. Science 329, 1492–1499 (2010).3) Fang, D. et al. Phosphorylation of beta-catenin by AKT promotes beta-catenin transcriptional activity. J. Biol. Chem. 282, 11221–11229 (2007).

Aliases: 20 kDa myosin light chain antibody; Human 20kDa myosin light chain (MLC2) mRNA complete cds antibody; LC20 antibody; MGC3505 antibody; MLC 2 antibody; MLC-2C antibody; MLC2 antibody; MLY 9 antibody; MRLC1 antibody; MYL9 antibody; MYL9_HUMAN antibody; Myosin light chain 9 regulatory antibody; Myosin light polypeptide 9 regulatory antibody; myosin regulatory light chain 1 antibody; Myosin regulatory light chain 2 antibody; Myosin regulatory light chain 2 smooth muscle isoform antibody; Myosin regulatory light chain 9 antibody; Myosin regulatory light chain MRLC1 antibody; Myosin regulatory light polypeptide 9 antibody; Myosin RLC antibody; Myosin vascular smooth muscle light chain 2 antibody; MYRL2 antibody; OTTHUMP00000030857 antibody; smooth muscle isoform antibody

UniProt: [P24844](#)

Application Details

Application Notes: WB:1:500-1:1000, IF:1:100-1:200,

Restrictions: For Research Use only

Handling

Format: Liquid

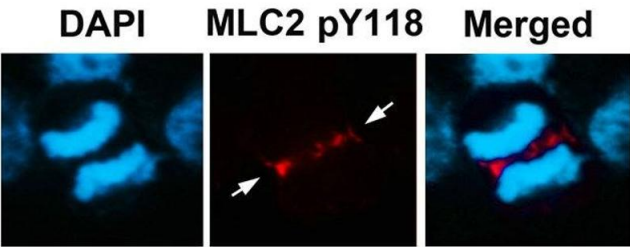
Buffer: Supplied at 1.0 mg/mL in phosphate buffered saline (without Mg²⁺ and Ca²⁺), pH 7.4, 150 mM NaCl, 0.02 % sodium azide and 50 % glycerol.

Preservative: Sodium azide

Precaution of Use: This product contains Sodium azide: a POISONOUS AND HAZARDOUS SUBSTANCE which should be handled by trained staff only.

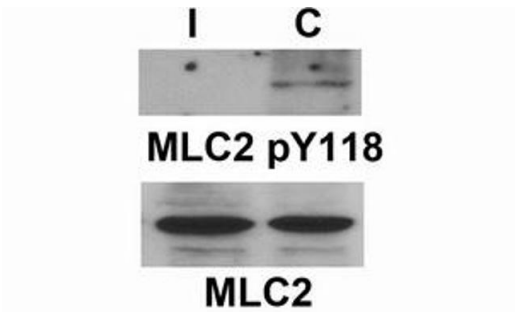
Storage: -20 °C,-80 °C

Storage Comment: Upon receipt, store at -20°C or -80°C. Avoid repeated freeze.



Immunofluorescence

Image 1. Immunofluorescence staining of methanol-fixed U87 cells using MLC2 (Phospho-Tyr118) Antibody.



U87 cells were synchronized in I (interphase) and C (Cytokinesis) respectively, then were harvested for immunoblotting.

Western Blotting

Image 2.