

Datasheet for ABIN7138918
anti-Paxillin antibody (pTyr118)[Go to Product page](#)

2 Images

Overview

Quantity:	100 µL
Target:	Paxillin (PXN)
Binding Specificity:	pTyr118
Reactivity:	Human
Host:	Rabbit
Clonality:	Polyclonal
Conjugate:	This Paxillin antibody is un-conjugated
Application:	Western Blotting (WB), ELISA, Immunohistochemistry (IHC)

Product Details

Immunogen:	Peptide sequence around phosphorylation site of tyrosine 118 (H-V-Y(p)-S-F) derived from Human Paxillin.
Isotype:	IgG
Cross-Reactivity:	Human, Mouse, Rat
Purification:	Antibodies were produced by immunizing rabbits with synthetic phosphopeptide and KLH conjugates. Antibodies were purified by affinity-chromatography using epitope-specific phosphopeptide. Non-phospho specific antibodies were removed by chromatography using

Target Details

Target:	Paxillin (PXN)
Alternative Name:	PXN (PXN Products)

Target Details

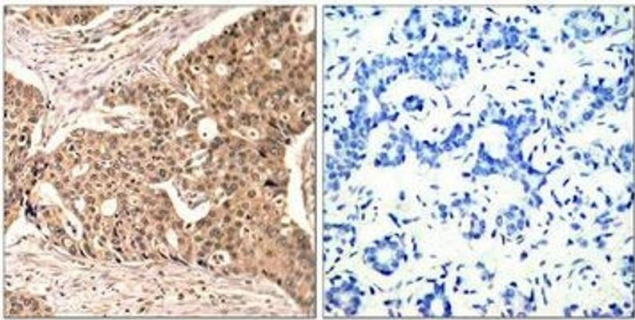
Background:	Background: Cytoskeletal protein involved in actin-membrane attachment at sites of cell adhesion to the extracellular matrix (focal adhesion). Tao WA, et al.(2005)Nat Methods.2(8): 591-598. Zhang Y, et al.(2005) Mol Cell Proteomics.4(9): 1240-1250. Sanders MA, et al.(2005)J Biol Chem.280(25): 23516-23522. Rush J, et al.(2004) Nat Biotechnol. 23(1): 94-101. Aliases: FLJ16691 antibody, FLJ23042 antibody, Paired box protein Pax 1 antibody, PAX 1 antibody, PAX1 antibody, PAXI_HUMAN antibody, Paxillin alpha antibody, Paxillin antibody, PXN antibody, PXN protein antibody
UniProt:	P49023
Pathways:	MAPK Signaling , EGFR Signaling Pathway , Response to Growth Hormone Stimulus , Cell-Cell Junction Organization , Maintenance of Protein Location , CXCR4-mediated Signaling Events , Signaling Events mediated by VEGFR1 and VEGFR2 , Signaling of Hepatocyte Growth Factor Receptor , VEGF Signaling

Application Details

Application Notes:	WB:1:500-1:1000, IHC:1:50-1:100,
Restrictions:	For Research Use only

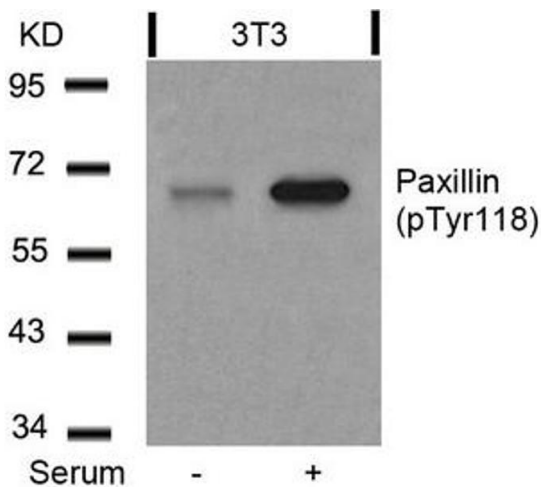
Handling

Format:	Liquid
Buffer:	Supplied at 1.0 mg/mL in phosphate buffered saline (without Mg2+ and Ca2+), pH 7.4, 150 mM NaCl, 0.02 % sodium azide and 50 % glycerol.
Preservative:	Sodium azide
Precaution of Use:	This product contains Sodium azide: a POISONOUS AND HAZARDOUS SUBSTANCE which should be handled by trained staff only.
Storage:	-20 °C,-80 °C
Storage Comment:	Upon receipt, store at -20°C or -80°C. Avoid repeated freeze.



Immunohistochemistry

Image 1. Immunohistochemical analysis of paraffin-embedded human breast carcinoma tissue using Paxillin(Phospho-Tyr118) Antibody(left) or the same antibody preincubated with blocking peptide(right).



Western Blotting

Image 2. Western blot analysis of extracts from 3T3 cells untreated or treated with serum using Paxillin(Phospho-Tyr118) Antibody.