

Datasheet for ABIN7138930
anti-CDK6 antibody (pTyr13)[Go to Product page](#)

4 Images

Overview

Quantity:	100 µL
Target:	CDK6
Binding Specificity:	pTyr13
Reactivity:	Human
Host:	Rabbit
Clonality:	Polyclonal
Conjugate:	This CDK6 antibody is un-conjugated
Application:	Western Blotting (WB), Immunohistochemistry (IHC), Immunofluorescence (IF), ELISA

Product Details

Immunogen:	Peptide sequence around phosphorylation site of tyrosine 13 (Q-Q-Y(p)-E-C) derived from Human CDK6.
Isotype:	IgG
Cross-Reactivity:	Human, Mouse
Purification:	Antibodies were produced by immunizing rabbits with synthetic phosphopeptide and KLH conjugates. Antibodies were purified by affinity-chromatography using epitope-specific phosphopeptide. Non-phospho specific antibodies were removed by chromatography using

Target Details

Target:	CDK6
Alternative Name:	CDK6 (CDK6 Products)

Target Details

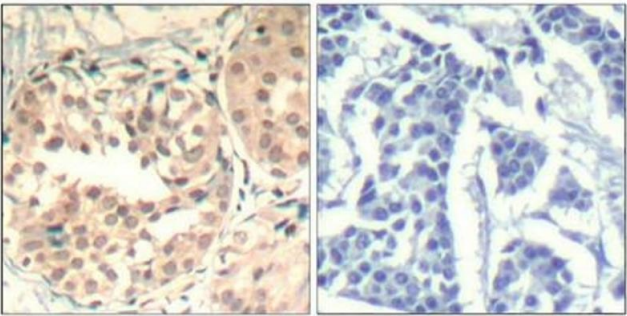
Background:	<p>Background:</p> <p>Probably involved in the control of the cell cycle. Interacts with D-type G1 cyclins.</p> <p>Aliases: CDK 6 antibody, CDK6 antibody, CDK6_HUMAN antibody, Cell division protein kinase 6 antibody, Crk 2 antibody, Crk2 antibody, Cyclin dependent kinase 6 antibody, Cyclin-dependent kinase 6 antibody, MCPH12 antibody, MGC59692 antibody, p40 antibody, PLSTIRE antibody, Serine/threonine protein kinase PLSTIRE antibody, Serine/threonine-protein kinase PLSTIRE antibody, STQTL11 antibody</p>
UniProt:	Q00534
Pathways:	Cell Division Cycle , Mitotic G1-G1/S Phases

Application Details

Application Notes:	WB:1:500-1:1000, IHC:1:50-1:100, IF:1:100-1:200,
Restrictions:	For Research Use only

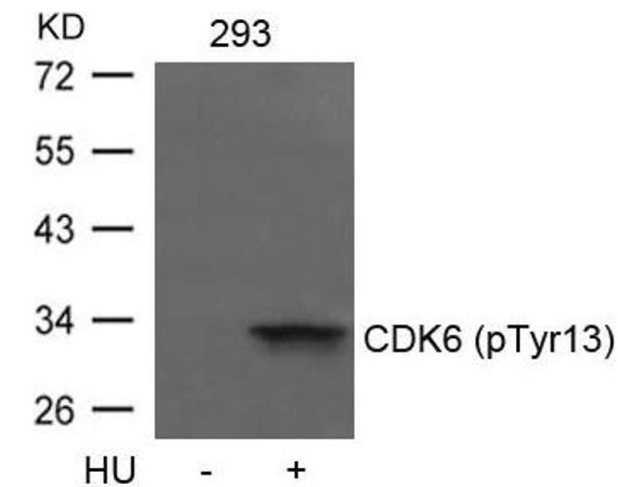
Handling

Format:	Liquid
Buffer:	Supplied at 1.0 mg/mL in phosphate buffered saline (without Mg ²⁺ and Ca ²⁺), pH 7.4, 150 mM NaCl, 0.02 % sodium azide and 50 % glycerol.
Preservative:	Sodium azide
Precaution of Use:	This product contains Sodium azide: a POISONOUS AND HAZARDOUS SUBSTANCE which should be handled by trained staff only.
Storage:	-20 °C,-80 °C
Storage Comment:	Upon receipt, store at -20°C or -80°C. Avoid repeated freeze.



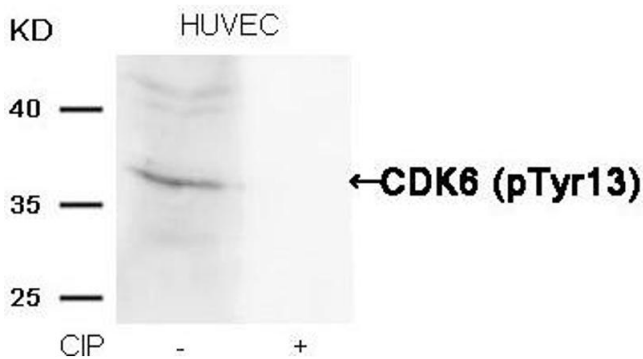
Immunohistochemistry

Image 1. Immunohistochemical analysis of paraffin-embedded human breast carcinoma tissue using CDK6(Phospho-Tyr13) Antibody(left) or the same antibody preincubated with blocking peptide(right).



Western Blotting

Image 2. Western blot analysis of extracts from 293 cells untreated or treated with HU using CDK6(phospho-Tyr13) Antibody.



Western Blotting

Image 3. Western blot analysis of extracts from HUVEC cells, treated with calf intestinal phosphatase (CIP), using CDK6 (phospho-Tyr13) Antibody.

Please check the [product details page](#) for more images. Overall 4 images are available for ABIN7138930.