

Datasheet for ABIN7138957  
**anti-Claudin 7 antibody (pTyr210)**[Go to Product page](#)

## 1 Image

## Overview

Quantity:	100 µL
Target:	Claudin 7 (CLDN7)
Binding Specificity:	pTyr210
Reactivity:	Human
Host:	Rabbit
Clonality:	Polyclonal
Conjugate:	This Claudin 7 antibody is un-conjugated
Application:	Western Blotting (WB), ELISA

## Product Details

Immunogen:	Peptide sequence around phosphorylation site of tyrosine 210 (S-K-E-Y(p)-V) derived from Human Claudin 7.
Isotype:	IgG
Cross-Reactivity:	Human, Mouse, Rat
Purification:	Antibodies were produced by immunizing rabbits with synthetic phosphopeptide and KLH conjugates. Antibodies were purified by affinity-chromatography using epitope-specific phosphopeptide. Non-phospho specific antibodies were removed by chromatography using

## Target Details

Target:	Claudin 7 (CLDN7)
Alternative Name:	CLDN7 ( <a href="#">CLDN7 Products</a> )

## Target Details

Background:	<p>Background:</p> <p>Claudins, such as CLDN7, are involved in the formation of tight junctions between epithelial cells. Tight junctions restrict lateral diffusion of lipids and membrane proteins, and thereby physically define the border between the apical and basolateral compartments of epithelial cells.</p> <p>Keen T.J., Submitted (SEP-1998) to the EMBL/GenBank/DDBJ databases.</p> <p>Kalnine N., Submitted (MAY-2003) to the EMBL/GenBank/DDBJ databases.</p> <p>The MGC Project Team, Genome Res. 14:2121-2127(2004).</p> <p>Aliases: CEPTR L2 antibody, CEPTRL 2 antibody, CEPTRL2 antibody, Claudin 1 antibody, Claudin 7 antibody, Claudin 9 antibody, Claudin-7 antibody, Claudin1 antibody, Claudin7 antibody, Claudin9 antibody, CLD7_HUMAN antibody, CLDN 7 antibody, CLDN-7 antibody, CLDN7 antibody, Clostridium perfringens enterotoxin receptor like 2 antibody, CPETR L2 antibody, CPETRL 2 antibody, CPETRL2 antibody, Hs.84359 antibody</p>
-------------	---

UniProt:	<a href="#">O95471</a>
----------	------------------------

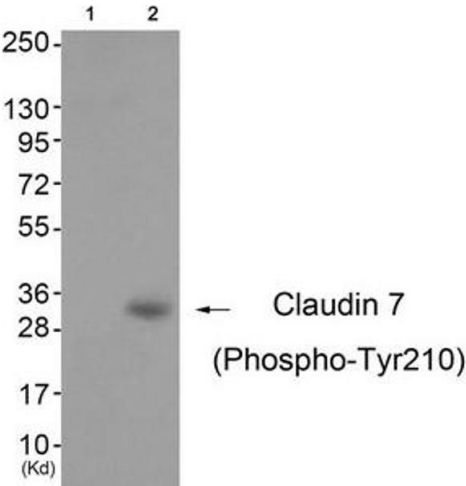
Pathways:	<a href="#">Hepatitis C</a>
-----------	-----------------------------

## Application Details

Application Notes:	WB:1:500-1:1000,
Restrictions:	For Research Use only

## Handling

Format:	Liquid
Buffer:	Rabbit IgG in phosphate buffered saline (without Mg <sup>2+</sup> and Ca <sup>2+</sup> ), pH 7.4, 150 mM NaCl, 0.02 % sodium azide and 50 % glycerol.
Preservative:	Sodium azide
Precaution of Use:	This product contains Sodium azide: a POISONOUS AND HAZARDOUS SUBSTANCE which should be handled by trained staff only.
Storage:	-20 °C,-80 °C
Storage Comment:	Upon receipt, store at -20°C or -80°C. Avoid repeated freeze.



Western Blotting

**Image 1.** Western blot analysis of extracts from 3T3 cells (Lane 2), using Claudin 7 (Phospho-Tyr210) Antibody. The lane on the left is treated with antigen-specific peptide.