

Datasheet for ABIN7138958
anti-Claudin 5 antibody (pTyr217)[Go to Product page](#)

1 Image

Overview

| | |
|----------------------|--|
| Quantity: | 100 µL |
| Target: | Claudin 5 (CLDN5) |
| Binding Specificity: | pTyr217 |
| Reactivity: | Human |
| Host: | Rabbit |
| Clonality: | Polyclonal |
| Conjugate: | This Claudin 5 antibody is un-conjugated |
| Application: | ELISA, Immunohistochemistry (IHC) |

Product Details

| | |
|-------------------|--|
| Immunogen: | Peptide sequence around phosphorylation site of tyrosine 217 (K-K-N-Y(p)-V) derived from Human Claudin 5. |
| Isotype: | IgG |
| Cross-Reactivity: | Human, Mouse, Rat |
| Purification: | Antibodies were produced by immunizing rabbits with synthetic phosphopeptide and KLH conjugates. Antibodies were purified by affinity-chromatography using epitope-specific phosphopeptide. Non-phospho specific antibodies were removed by chromatography using |

Target Details

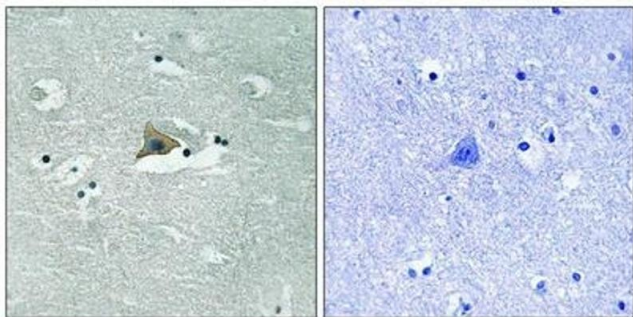
| | |
|-------------------|--|
| Target: | Claudin 5 (CLDN5) |
| Alternative Name: | CLDN5 (CLDN5 Products) |

Target Details

| | |
|-------------|---|
| Background: | <p>Background:</p> <p>This gene encodes a member of the claudin family. Claudins are integral membrane proteins and components of tight junction strands. Tight junction strands serve as a physical barrier to prevent solutes and water from passing freely through the paracellular space between epithelial or endothelial cell sheets. Mutations in this gene have been found in patients with velocardiofacial syndrome.</p> <p>Sirotkin H., Genomics 42:245-251(1997).</p> <p>Collins J.E., Genome Biol. 5:RESEARCH84.1-RESEARCH84.11(2004).</p> <p>The MGC Project Team, Genome Res. 14:2121-2127(2004).</p> <p>Aliases: Androgen withdrawal and apoptosis induced protein RVP1 like antibody, AWAL antibody, BEC 1 antibody, BEC1 antibody, Claudin 5 (transmembrane protein deleted in velocardiofacial syndrome) antibody, Claudin-5 antibody, Claudin5 antibody, CLD5_HUMAN antibody, CLDN 5 antibody, Cldn5 antibody, CPETR L1 antibody, CPETRL 1 antibody, CPETRL1 antibody, TMDVCF antibody, TMVCF antibody, Transmembrane protein deleted in VCFS antibody, Transmembrane protein deleted in velocardiofacial syndrome antibody</p> |
| UniProt: | O00501 |
| Pathways: | Hepatitis C |

Application Details

| | |
|--------------------|---|
| Application Notes: | IHC:1:50-1:100, |
| Restrictions: | For Research Use only |
| Handling | |
| Format: | Liquid |
| Buffer: | Rabbit IgG in phosphate buffered saline (without Mg ²⁺ and Ca ²⁺), pH 7.4, 150 mM NaCl, 0.02 % sodium azide and 50 % glycerol. |
| Preservative: | Sodium azide |
| Precaution of Use: | This product contains Sodium azide: a POISONOUS AND HAZARDOUS SUBSTANCE which should be handled by trained staff only. |
| Storage: | -20 °C,-80 °C |
| Storage Comment: | Upon receipt, store at -20°C or -80°C. Avoid repeated freeze. |



Immunohistochemistry

Image 1. Immunohistochemical analysis of paraffin-embedded human brain tissue using Claudin 5 (Phospho-Tyr217) antibody (left) or the same antibody preincubated with blocking peptide (right).