

Datasheet for ABIN7138959
anti-Claudin 6 antibody (pTyr219)[Go to Product page](#)

1 Image

Overview

Quantity:	100 µL
Target:	Claudin 6 (CLDN6)
Binding Specificity:	pTyr219
Reactivity:	Human
Host:	Rabbit
Clonality:	Polyclonal
Conjugate:	This Claudin 6 antibody is un-conjugated
Application:	Western Blotting (WB), ELISA

Product Details

Immunogen:	Peptide sequence around phosphorylation site of tyrosine 219 (T-K-N-Y(p)-V) derived from Human Claudin 6.
Isotype:	IgG
Cross-Reactivity:	Human, Mouse
Purification:	Antibodies were produced by immunizing rabbits with synthetic phosphopeptide and KLH conjugates. Antibodies were purified by affinity-chromatography using epitope-specific phosphopeptide. Non-phospho specific antibodies were removed by chromatography using

Target Details

Target:	Claudin 6 (CLDN6)
Alternative Name:	CLDN6 (CLDN6 Products)

Target Details

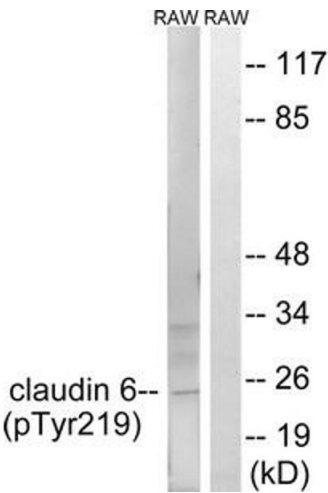
Background:	<p>Background:</p> <p>Claudin 6 Plays a major role in tight junction-specific obliteration of the intercellular space.</p> <p>Directly interacts with TJP1/ZO-1, TJP2/ZO-2 and TJP3/ZO- 3.</p> <p>Keen T.J., Submitted (SEP-1999) to the EMBL/GenBank/DDBJ databases.</p> <p>Troy T., Submitted (FEB-2001) to the EMBL/GenBank/DDBJ databases.</p> <p>Clark H.F., Genome Res. 13:2265-2270(2003).</p> <p>Aliases: Claudin-6 antibody, Claudin6 antibody, CLD6_HUMAN antibody, CLDN 6 antibody, CLDN6 antibody, OTTHUMP00000159248 antibody, Skullin 2 antibody, Skullin antibody, UNQ757/PRO1488 antibody</p>
UniProt:	P56747
Pathways:	Hepatitis C

Application Details

Application Notes:	WB:1:500-1:1000,
Restrictions:	For Research Use only

Handling

Format:	Liquid
Buffer:	Rabbit IgG in phosphate buffered saline (without Mg ²⁺ and Ca ²⁺), pH 7.4, 150 mM NaCl, 0.02 % sodium azide and 50 % glycerol.
Preservative:	Sodium azide
Precaution of Use:	This product contains Sodium azide: a POISONOUS AND HAZARDOUS SUBSTANCE which should be handled by trained staff only.
Storage:	-20 °C,-80 °C
Storage Comment:	Upon receipt, store at -20°C or -80°C. Avoid repeated freeze.



Western Blotting

Image 1. Western blot analysis of extracts from RAW264.7 cells treated with UV using Claudin 6 (Phospho-Tyr219) Antibody. The lane on the right is treated with the antigen-specific peptide.