



[Go to Product page](#)

Datasheet for ABIN7138962
anti-CDK6 antibody (pTyr24)

3 Images

Overview

Quantity:	100 µL
Target:	CDK6
Binding Specificity:	pTyr24
Reactivity:	Human
Host:	Rabbit
Clonality:	Polyclonal
Conjugate:	This CDK6 antibody is un-conjugated
Application:	Western Blotting (WB), Immunohistochemistry (IHC), Immunofluorescence (IF), ELISA

Product Details

Immunogen:	Peptide sequence around phosphorylation site of tyrosine 24 (G-A-Y(p)-G-K) derived from Human CDK6.
Isotype:	IgG
Cross-Reactivity:	Human, Mouse
Purification:	Antibodies were produced by immunizing rabbits with synthetic phosphopeptide and KLH conjugates. Antibodies were purified by affinity-chromatography using epitope-specific phosphopeptide. Non-phospho specific antibodies were removed by chromatography using

Target Details

Target:	CDK6
Alternative Name:	CDK6 (CDK6 Products)

Target Details

Background: Background: Probably involved in the control of the cell cycle. Interacts with D-type G1 cyclins.
Aliases: CDK 6 antibody, CDK6 antibody, CDK6_HUMAN antibody, Cell division protein kinase 6 antibody, Crk 2 antibody, Crk2 antibody, Cyclin dependent kinase 6 antibody, Cyclin-dependent kinase 6 antibody, MCPH12 antibody, MGC59692 antibody, p40 antibody, PLSTIRE antibody, Serine/threonine protein kinase PLSTIRE antibody, Serine/threonine-protein kinase PLSTIRE antibody, STQTL11 antibody

UniProt: [Q00534](#)

Pathways: [Cell Division Cycle](#), [Mitotic G1-G1/S Phases](#)

Application Details

Application Notes: WB:1:500-1:1000, IHC:1:50-1:100, IF:1:100-1:200,

Restrictions: For Research Use only

Handling

Format: Liquid

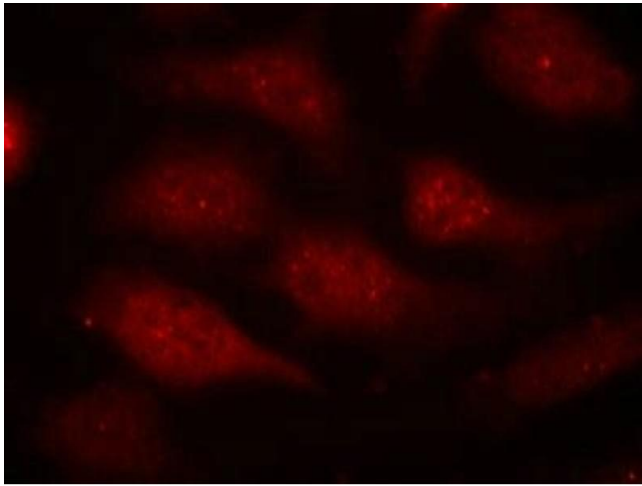
Buffer: Supplied at 1.0 mg/mL in phosphate buffered saline (without Mg²⁺ and Ca²⁺), pH 7.4, 150 mM NaCl, 0.02 % sodium azide and 50 % glycerol.

Preservative: Sodium azide

Precaution of Use: This product contains Sodium azide: a POISONOUS AND HAZARDOUS SUBSTANCE which should be handled by trained staff only.

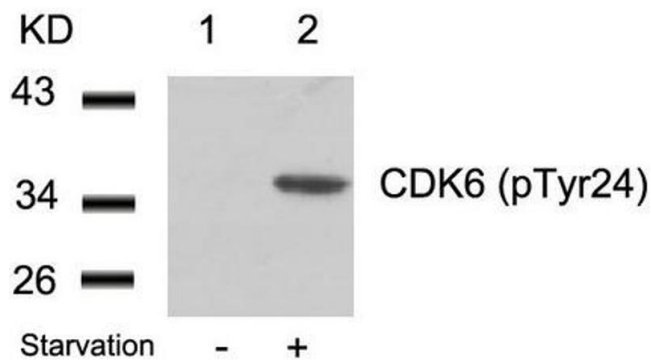
Storage: -20 °C,-80 °C

Storage Comment: Upon receipt, store at -20°C or -80°C. Avoid repeated freeze.



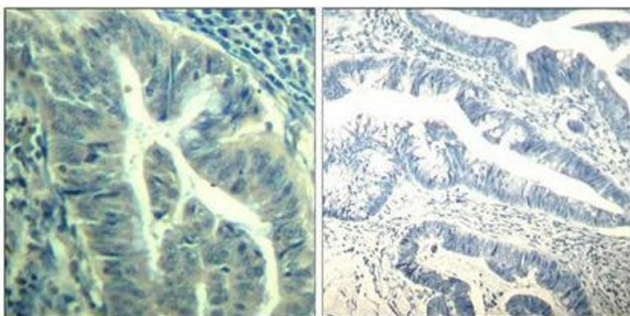
Immunofluorescence

Image 1. Immunofluorescence staining of methanol-fixed HeLa cells using CDK6(phospho-Tyr24) Antibody.



Western Blotting

Image 2. Western blot analysis of extracts from 293 cells untreated(lane 1) or treated with starvation(lane 2) using CDK6(phospho-Tyr24) Antibody.



Immunohistochemistry

Image 3. Immunohistochemical analysis of paraffin-embedded human colon carcinoma tissue using CDK6(Phospho-Tyr24) Antibody(left) or the same antibody preincubated with blocking peptide(right).