

Datasheet for ABIN7138967

**anti-Glycogen Synthase Kinase 3 (GSK3) (pTyr216), (pTyr279)
antibody**[Go to Product page](#)

4 Images

Overview

Quantity:	100 µL
Target:	Glycogen Synthase Kinase 3 (GSK3)
Binding Specificity:	pTyr216, pTyr279
Reactivity:	Human
Host:	Rabbit
Clonality:	Polyclonal
Conjugate:	Un-conjugated
Application:	ELISA, Western Blotting (WB), Immunohistochemistry (IHC), Immunofluorescence (IF)

Product Details

Immunogen:	Peptide sequence around phosphorylation site of tyrosine 279/216 (V-S-Y(p)-I-C) derived from Human GSK3alpha/beta .
Isotype:	IgG
Cross-Reactivity:	Human, Mouse, Rat
Purification:	Antibodies were produced by immunizing rabbits with synthetic phosphopeptide and KLH conjugates. Antibodies were purified by affinity-chromatography using epitope-specific phosphopeptide. Non-phospho specific antibodies were removed by chromatography using

Target Details

Target:	Glycogen Synthase Kinase 3 (GSK3)
Alternative Name:	GSK3A/GSK3B (GSK3 Products)

Target Details

Background:	Background: Participates in the Wnt signaling pathway. Implicated in the hormonal control of several regulatory proteins including glycogen synthase, MYB and the transcription factor JUN. Phosphorylates JUN at sites proximal to its DNA-binding domain, thereby reducing its affinity for DNA. Phosphorylates MUC1 in breast cancer cells, and decreases the interaction of MUC1 with CTNNB1/beta-catenin. Phosphorylates CTNNB1/beta-catenin. Chin PC, et al. Brain Res Mol Brain Res 2005 Jun 13, 137(1-2): 193-201 Takahashi-Yanaga F, et al. Biochem Biophys Res Commun 2004 Apr 02, 316(2): 411-415 Fan G, et al. J Biol Chem 2003 Dec 26, 278(52): 52432-52436 Liao X, et al. Mol Cancer Ther 2003 Nov, 2(11): 1215-1222 Aliases: Factor A, GSK-3 alpha/beta, kinase GSK3-alpha/beta
-------------	---

UniProt: [P49840](#), [P49841](#)

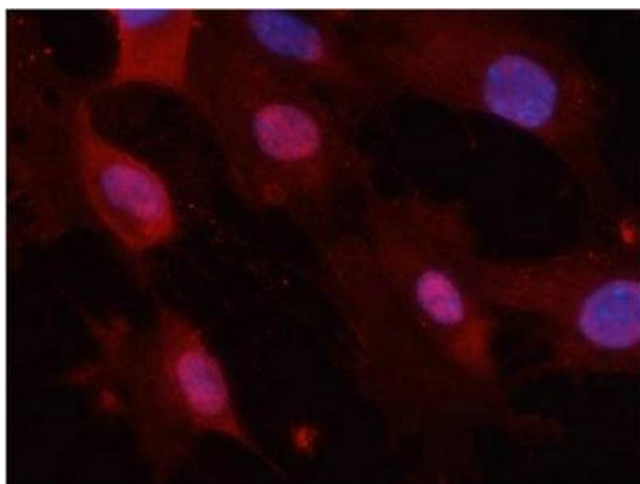
Application Details

Application Notes: WB:1:500-1:1000, IHC:1:50-1:100, IF:1:100-1:200,

Restrictions: For Research Use only

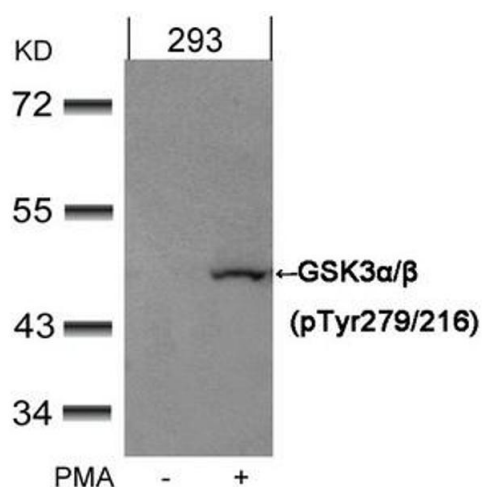
Handling

Format:	Liquid
Buffer:	Supplied at 1.0 mg/mL in phosphate buffered saline (without Mg ²⁺ and Ca ²⁺), pH 7.4, 150 mM NaCl, 0.02 % sodium azide and 50 % glycerol.
Preservative:	Sodium azide
Precaution of Use:	This product contains Sodium azide: a POISONOUS AND HAZARDOUS SUBSTANCE which should be handled by trained staff only.
Storage:	-20 °C, -80 °C
Storage Comment:	Upon receipt, store at -20°C or -80°C. Avoid repeated freeze.



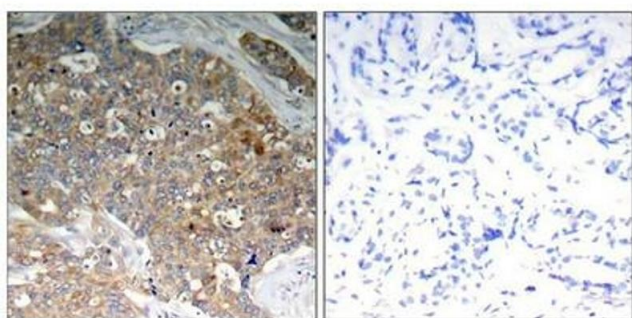
Immunofluorescence

Image 1. Immunofluorescence staining of methanol-fixed MEF cells using GSK3α/β(Phospho-Tyr279/216) Antibody.



Western Blotting

Image 2. Western blot analysis of extracts from 293 cells untreated or treated with PMA using GSK3α/β(Phospho-Tyr279/216) Antibody.



Immunohistochemistry

Image 3. Immunohistochemical analysis of paraffin-embedded human breast carcinoma tissue using GSK3α/β(Phospho-Tyr279/216) Antibody (left) or the same antibody preincubated with blocking peptide (right).

Please check the [product details page](#) for more images. Overall 4 images are available for ABIN7138967.