

Datasheet for ABIN7138969
anti-FCGR2B antibody (pTyr292)[Go to Product page](#)

1 Image

Overview

Quantity:	100 µL
Target:	FCGR2B
Binding Specificity:	pTyr292
Reactivity:	Human
Host:	Rabbit
Clonality:	Polyclonal
Conjugate:	This FCGR2B antibody is un-conjugated
Application:	Western Blotting (WB), ELISA

Product Details

Immunogen:	Peptide sequence around phosphorylation site of tyrosine 292 (I-T-Y(p)-S-L) derived from Human CD32.
Isotype:	IgG
Cross-Reactivity:	Human
Purification:	Antibodies were produced by immunizing rabbits with synthetic phosphopeptide and KLH conjugates. Antibodies were purified by affinity-chromatography using epitope-specific phosphopeptide. Non-phospho specific antibodies were removed by chromatography using

Target Details

Target:	FCGR2B
Alternative Name:	FCGR2B (FCGR2B Products)

Target Details

Background:

Background:

Receptor for the Fc region of complexed or aggregated immunoglobulins gamma. Low affinity receptor. Involved in a variety of effector and regulatory functions such as phagocytosis of immune complexes and modulation of antibody production by B-cells. Binding to this receptor results in down-modulation of previous state of cell activation triggered via antigen receptors on B-cells (BCR), T-cells (TCR) or via another Fc receptor. Isoform IIB1 fails to mediate endocytosis or phagocytosis. Isoform IIB2 does not trigger phagocytosis.

Stuart S.G., EMBO J. 8:3657-3666(1989).

Brooks D.G., J. Exp. Med. 170:1369-1385(1989).

Engelhardt W., Eur. J. Immunol. 20:1367-1377(1990).

Aliases: CD32 antibody, CD32 antigen antibody, CD32B antibody, CDw32 antibody, Fc fragment of IgG, low affinity II, receptor for (CD32) antibody, Fc fragment of IgG, low affinity IIb, receptor antibody, Fc fragment of IgG, low affinity IIb, receptor (CD32) antibody, Fc fragment of IgG, low affinity IIb, receptor for (CD32) antibody, Fc fragment of IgG, low affinity IIb, receptor for antibody, Fc gamma receptor IIB antibody, Fc gamma RII antibody, Fc gamma RIIB antibody, Fc-gamma RII antibody, Fc-gamma RII-b antibody, Fc-gamma-RIIb antibody, FCG2 antibody, FCG2B_HUMAN antibody, Fcgr2 antibody, FCGR2B antibody, FCRII antibody, FcRII-b antibody, IGFR2 antibody, IgG Fc receptor II beta antibody, IgG Fc receptor II-b antibody, Low affinity immunoglobulin gamma Fc region receptor II antibody, Low affinity immunoglobulin gamma Fc region receptor II-b antibody, Ly-17 antibody, Lym 1 antibody, Lymphocyte antigen 17 antibody

UniProt:

[P31994](#)

Pathways:

[Cellular Response to Molecule of Bacterial Origin](#), [Regulation of Leukocyte Mediated Immunity](#), [Production of Molecular Mediator of Immune Response](#), [BCR Signaling](#)

Application Details

Application Notes:

WB:1:500-1:1000,

Restrictions:

For Research Use only

Handling

Format:

Liquid

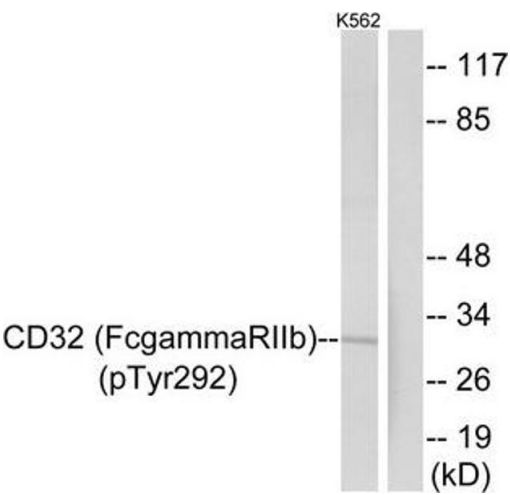
Buffer:

Rabbit IgG in phosphate buffered saline (without Mg²⁺ and Ca²⁺), pH 7.4, 150 mM NaCl, 0.02 % sodium azide and 50 % glycerol.

Handling

Preservative:	Sodium azide
Precaution of Use:	This product contains Sodium azide: a POISONOUS AND HAZARDOUS SUBSTANCE which should be handled by trained staff only.
Storage:	-20 °C,-80 °C
Storage Comment:	Upon receipt, store at -20°C or -80°C. Avoid repeated freeze.

Images



Western Blotting

Image 1. Western blot analysis of extracts from K562 cells treated with PMA using CD32 (Phospho-Tyr292) Antibody. The lane on the right is treated with the antigen-specific peptide.