



[Go to Product page](#)

Datasheet for ABIN7138971
anti-DOK2 antibody (pTyr299)

4 Images

Overview

Quantity:	100 µL
Target:	DOK2
Binding Specificity:	pTyr299
Reactivity:	Human
Host:	Rabbit
Clonality:	Polyclonal
Conjugate:	This DOK2 antibody is un-conjugated
Application:	Western Blotting (WB), Immunohistochemistry (IHC), ELISA, Immunofluorescence (IF)

Product Details

Immunogen:	Peptide sequence around phosphorylation site of tyrosine 299 (G-E-Y(p)-A-V) derived from Human p56Dok-2.
Isotype:	IgG
Cross-Reactivity:	Human
Purification:	Antibodies were produced by immunizing rabbits with synthetic phosphopeptide and KLH conjugates. Antibodies were purified by affinity-chromatography using epitope-specific phosphopeptide. Non-phospho specific antibodies were removed by chromatography using

Target Details

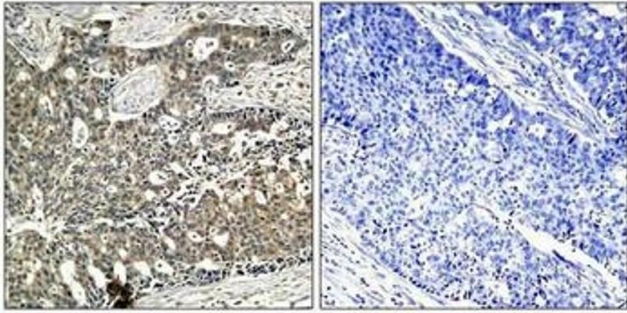
Target:	DOK2
Alternative Name:	DOK2 (DOK2 Products)

Target Details

Background:	<p>Background:</p> <p>DOK proteins are enzymatically inert adaptor or scaffolding proteins. They provide a docking platform for the assembly of multimolecular signaling complexes. DOK2 may modulate the cellular proliferation induced by IL-4, as well as IL-2 and IL-3. May be involved in modulating Bcr-Abl signaling. Attenuates EGF-stimulated MAP kinase activation</p> <p>Feng Cong, et.al. (1999) Mol. Cell. Biol , 19: 8314 - 8325.</p> <p>Serge Lemay, et.al. (2000) Mol. Cell. Biol , 20: 2743 - 2754.</p> <p>Ute Schaeper, et.al.(2000) J. Cell Biol , 149: 1419.</p> <p>Miyuki Honma, et.al. (2006) Genes Cells, 11: 143 - 151.</p> <p>Aliases: Docking protein 2 56 kDa antibody, Docking protein 2 antibody, DOK 2 antibody, DOK R antibody, DOK2 antibody, DOK2_HUMAN antibody, Downstream of tyrosine kinase 2 antibody, OTTHUMP00000161710 antibody, OTTHUMP00000224923 antibody, p56(dok 2) antibody, p56(dok-2) antibody, p56dok 2 antibody, p56DOK antibody, p56dok2 antibody</p>
UniProt:	O60496

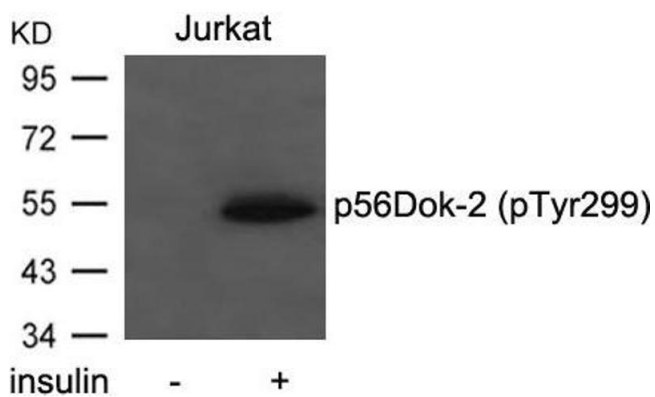
Application Details

Application Notes:	WB:1:500-1:1000, IHC:1:50-1:100, IF:1:100-1:200,
Restrictions:	For Research Use only
Handling	
Format:	Liquid
Buffer:	Supplied at 1.0 mg/mL in phosphate buffered saline (without Mg ²⁺ and Ca ²⁺), pH 7.4, 150 mM NaCl, 0.02 % sodium azide and 50 % glycerol.
Preservative:	Sodium azide
Precaution of Use:	This product contains Sodium azide: a POISONOUS AND HAZARDOUS SUBSTANCE which should be handled by trained staff only.
Storage:	-20 °C,-80 °C
Storage Comment:	Upon receipt, store at -20°C or -80°C. Avoid repeated freeze.



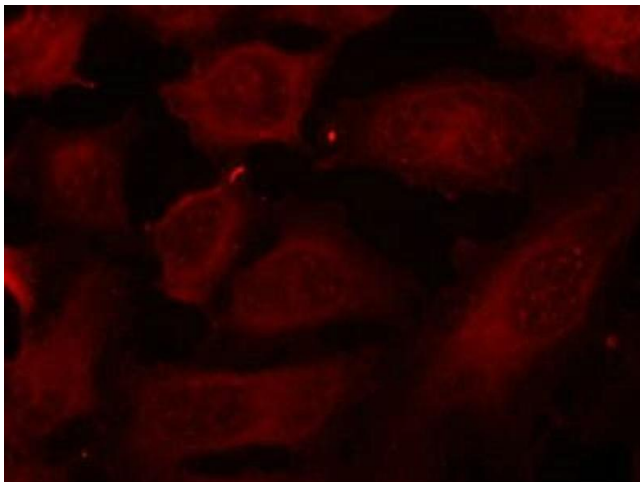
Immunohistochemistry

Image 1. Immunohistochemical analysis of paraffin-embedded human breast carcinoma tissue using p56Dok-2(Phospho-Tyr299) Antibody(left) or the same antibody preincubated with blocking peptide(right).



Western Blotting

Image 2. Western blot analysis of extracts from Jurkat cells untreated or treated with insulin using p56Dok-2(Phospho-Tyr299) Antibody.



Immunofluorescence

Image 3. Immunofluorescence staining of methanol-fixed HeLa cells using p56Dok-2(Phospho-Tyr299) Antibody.

Please check the [product details page](#) for more images. Overall 4 images are available for ABIN7138971.