

Datasheet for ABIN7138990
anti-BCR antibody (pTyr360)[Go to Product page](#)

1 Image

Overview

| | |
|----------------------|------------------------------------|
| Quantity: | 100 µL |
| Target: | BCR |
| Binding Specificity: | pTyr360 |
| Reactivity: | Human |
| Host: | Rabbit |
| Clonality: | Polyclonal |
| Conjugate: | This BCR antibody is un-conjugated |
| Application: | Western Blotting (WB), ELISA |

Product Details

| | |
|-------------------|--|
| Immunogen: | Peptide sequence around phosphorylation site of tyrosine 360 (T-T-Y(p)-R-M) derived from Human Bcr. |
| Isotype: | IgG |
| Cross-Reactivity: | Human, Mouse |
| Purification: | Antibodies were produced by immunizing rabbits with synthetic phosphopeptide and KLH conjugates. Antibodies were purified by affinity-chromatography using epitope-specific phosphopeptide. Non-phospho specific antibodies were removed by chromatography using |

Target Details

| | |
|-------------------|--------------------------------------|
| Target: | BCR |
| Alternative Name: | BCR (BCR Products) |

Target Details

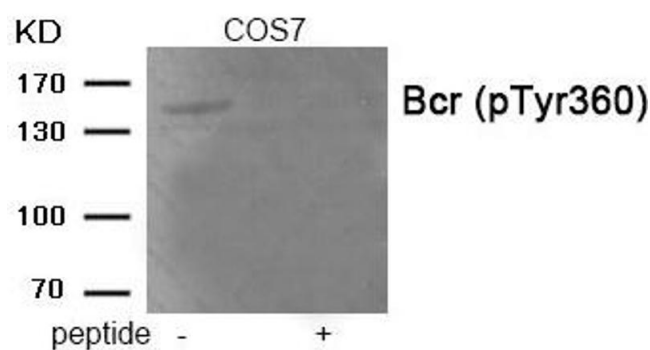
| | |
|-------------|---|
| Background: | <p>Background:</p> <p>GTPase-activating protein for RAC1 and CDC42. Promotes the exchange of RAC or CDC42-bound GDP by GTP, thereby activating them. Displays serine/threonine kinase activity.</p> <p>Perazzona B, et al. (2008) Oncogene 27, 2208-14. Sun T, Campbell M, Gordon W, Arlinghaus RB (2001) Biopolymers 60, 61-75. Wu Y, Liu J, Arlinghaus RB (1998) Oncogene 16, 141-6.</p> <p>Aliases: ALL antibody, bcr antibody, BCR/ABL FUSION GENE, INCLUDED antibody, BCR/FGFR1 chimera protein antibody, BCR/FGFR1 FUSION GENE, INCLUDED antibody, BCR/PDGFR FUSION GENE, INCLUDED antibody, BCR_HUMAN antibody, BCR1 antibody, Breakpoint cluster region antibody, Breakpoint cluster region protein antibody, CML antibody, D22S11 antibody, D22S662 antibody, FGFR1/BCR chimera protein antibody, PHL antibody, Renal carcinoma antigen NY-REN-26 antibody</p> |
| UniProt: | P11274 |
| Pathways: | Regulation of Leukocyte Mediated Immunity , Platelet-derived growth Factor Receptor Signaling |

Application Details

| | |
|--------------------|-----------------------|
| Application Notes: | WB:1:500-1:1000, |
| Restrictions: | For Research Use only |

Handling

| | |
|--------------------|---|
| Format: | Liquid |
| Buffer: | Rabbit IgG in phosphate buffered saline (without Mg ²⁺ and Ca ²⁺), pH 7.4, 150 mM NaCl, 0.02 % sodium azide and 50 % glycerol. |
| Preservative: | Sodium azide |
| Precaution of Use: | This product contains Sodium azide: a POISONOUS AND HAZARDOUS SUBSTANCE which should be handled by trained staff only. |
| Storage: | -20 °C, -80 °C |
| Storage Comment: | Upon receipt, store at -20°C or -80°C. Avoid repeated freeze. |



Western Blotting

Image 1. Western blot analysis of extracts from COS7 tissue using Bcr (Phospho-Tyr360) antibody. The lane on the right is treated with the antigen-specific peptide.