

Datasheet for ABIN7138994

## anti-ABL1/2 antibody (pTyr393, pTyr439)



[Go to Product page](#)

### 3 Images

#### Overview

Quantity:	100 µL
Target:	ABL1/2 (ABL1/ABL2)
Binding Specificity:	pTyr393, pTyr439
Reactivity:	Human
Host:	Rabbit
Clonality:	Polyclonal
Conjugate:	This ABL1/2 antibody is un-conjugated
Application:	Immunohistochemistry (IHC), Western Blotting (WB), Immunofluorescence (IF), ELISA

#### Product Details

Immunogen:	Peptide sequence around phosphorylation site of tyrosine 393/439 (D-T-Y(p)-T-A) derived from Human ABL1/2.
Isotype:	IgG
Cross-Reactivity:	Human, Mouse
Purification:	Antibodies were produced by immunizing rabbits with synthetic phosphopeptide and KLH conjugates. Antibodies were purified by affinity-chromatography using epitope-specific phosphopeptide. Non-phospho specific antibodies were removed by chromatography using

#### Target Details

Target:	ABL1/2 (ABL1/ABL2)
Alternative Name:	ABL1/ABL2 ( <a href="#">ABL1/ABL2 Products</a> )

## Target Details

Background:	<p>Background:</p> <p>Regulates cytoskeleton remodeling during cell differentiation, cell division and cell adhesion. Localizes to dynamic actin structures, and phosphorylates CRK and CRKL, DOK1, and other proteins controlling cytoskeleton dynamics. Regulates DNA repair potentially by activating the proapoptotic pathway when the DNA damage is too severe to be repaired. Phosphorylates PSMA7 that leads to an inhibition of proteasomal activity and cell cycle transition blocks.</p> <p>Wang, J.Y. et al. (2000) Oncogene 19, 5643-5650.</p> <p>Danial, N.N. et al. (2000) Oncogene 19, 2523-2531.</p> <p>Brasher, B.B. et al. (2000) J. Biol. Chem. 275, 35631-35637.</p> <p>Pluk, H. et al. (2002) Cell 108, 247-259.</p> <p>Aliases: Abelson murine leukemia viral oncogene homolog 1, c-ABL, p150</p>
-------------	---

UniProt:	<a href="#">P00519</a> , <a href="#">P42684</a>
----------	---

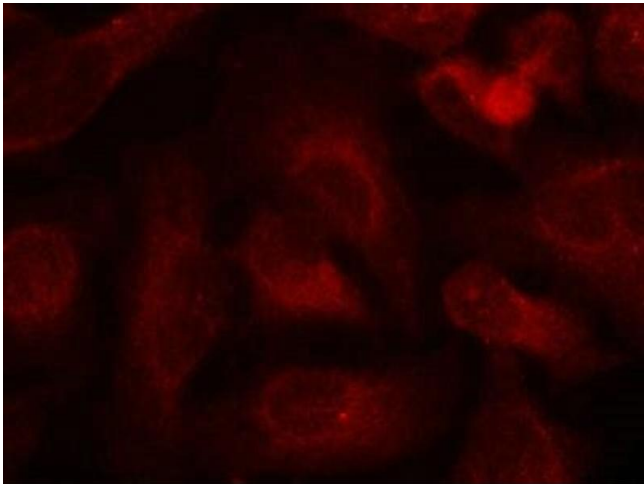
## Application Details

Application Notes:	WB:1:500-1:1000, IHC:1:50-1:100, IF:1:100-1:200,
--------------------	--

Restrictions:	For Research Use only
---------------	-----------------------

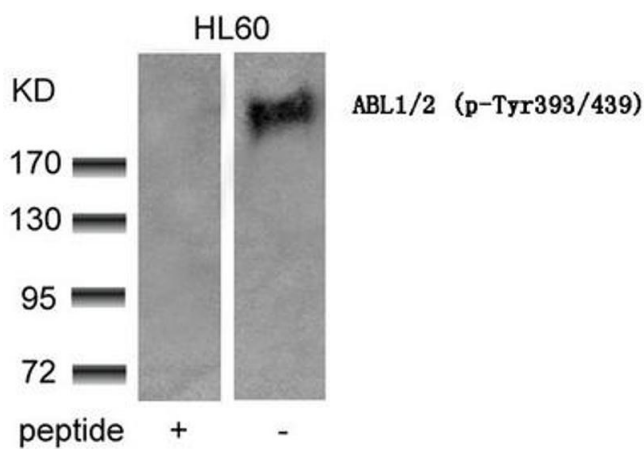
## Handling

Format:	Liquid
Buffer:	Supplied at 1.0 mg/mL in phosphate buffered saline (without Mg <sup>2+</sup> and Ca <sup>2+</sup> ), pH 7.4, 150 mM NaCl, 0.02 % sodium azide and 50 % glycerol.
Preservative:	Sodium azide
Precaution of Use:	This product contains Sodium azide: a POISONOUS AND HAZARDOUS SUBSTANCE which should be handled by trained staff only.
Storage:	-20 °C,-80 °C
Storage Comment:	Upon receipt, store at -20°C or -80°C. Avoid repeated freeze.



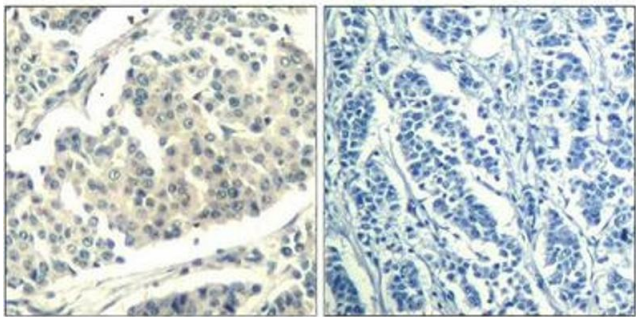
Immunofluorescence

**Image 1.** Immunofluorescence staining of methanol-fixed HeLa cells using ABL1/2(phospho-Tyr393/439) Antibody.



Western Blotting

**Image 2.** Western blot analysis of extracts from HL60 cells using ABL1/2(phospho-Tyr393/439) Antibody and the same antibody preincubated with blocking peptide.



Immunohistochemistry

**Image 3.** Immunohistochemical analysis of paraffin-embedded human breast carcinoma tissue using ABL1/2(Phospho-Tyr393/439) Antibody(left) or the same antibody preincubated with blocking peptide(right).