

Datasheet for ABIN7138997  
**anti-HCLS1 antibody (pTyr397)**[Go to Product page](#)

## 1 Image

## Overview

Quantity:	100 µL
Target:	HCLS1
Binding Specificity:	pTyr397
Reactivity:	Human
Host:	Rabbit
Clonality:	Polyclonal
Conjugate:	This HCLS1 antibody is un-conjugated
Application:	Western Blotting (WB), ELISA

## Product Details

Immunogen:	Peptide sequence around phosphorylation site of tyrosine 397(G-D-Y(p)-E-E) derived from Human HS1 .
Isotype:	IgG
Cross-Reactivity:	Human
Purification:	Antibodies were produced by immunizing rabbits with synthetic phosphopeptide and KLH conjugates. Antibodies were purified by affinity-chromatography using epitope-specific phosphopeptide. Non-phospho specific antibodies were removed by chromatography using

## Target Details

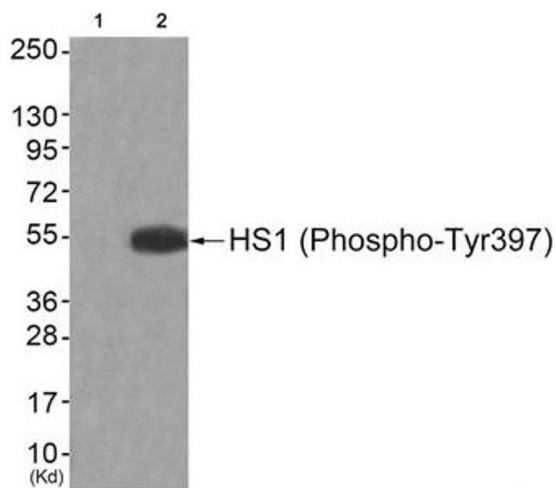
Target:	HCLS1
Alternative Name:	HCLS1 ( <a href="#">HCLS1 Products</a> )

## Target Details

Background:	<p>Background:</p> <p>Substrate of the antigen receptor-coupled tyrosine kinase. Plays a role in antigen receptor signaling for both clonal expansion and deletion in lymphoid cells. Directly associates with HAX-1, through binding to its C-terminal region. May also be involved in the regulation of gene expression.</p> <p>Kitamura D., Nucleic Acids Res. 17:9367-9379(1989).</p> <p>Kalnine N., Submitted (MAY-2003) to the EMBL/GenBank/DDBJ databases.</p> <p>Ota T., Nat. Genet. 36:40-45(2004).</p> <p>Aliases: Cortactin like antibody, CTTNL antibody, HCLS 1 antibody, Hcls1 antibody, HCLS1_HUMAN antibody, Hematopoietic cell specific Lyn substrate 1 antibody, Hematopoietic cell-specific LYN substrate 1 antibody, Hematopoietic lineage cell-specific protein antibody, HS 1 antibody, HS1 antibody, LckBP1 antibody, OTTHUMP00000215180 antibody, OTTHUMP00000215182 antibody, p75 antibody</p>
UniProt:	<a href="#">P14317</a>
Pathways:	<a href="#">Fc-epsilon Receptor Signaling Pathway</a> , <a href="#">EGFR Signaling Pathway</a> , <a href="#">Neurotrophin Signaling Pathway</a> , <a href="#">Regulation of Actin Filament Polymerization</a> , <a href="#">Myometrial Relaxation and Contraction</a> , <a href="#">Maintenance of Protein Location</a>

## Application Details

Application Notes:	WB:1:500-1:1000,
Restrictions:	For Research Use only
Handling	
Format:	Liquid
Buffer:	Rabbit IgG in phosphate buffered saline (without Mg <sup>2+</sup> and Ca <sup>2+</sup> ), pH 7.4, 150 mM NaCl, 0.02 % sodium azide and 50 % glycerol.
Preservative:	Sodium azide
Precaution of Use:	This product contains Sodium azide: a POISONOUS AND HAZARDOUS SUBSTANCE which should be handled by trained staff only.
Storage:	-20 °C,-80 °C
Storage Comment:	Upon receipt, store at -20°C or -80°C. Avoid repeated freeze.



Western Blotting

**Image 1.** Western blot analysis of extracts from JK cells (Lane 2), using HS1 (Phospho-Tyr397) Antibody. The lane on the left is treated with antigen-specific peptide.