

Datasheet for ABIN7138999
anti-PTK2B antibody (pTyr402)[Go to Product page](#)

3 Images

Overview

Quantity:	100 µL
Target:	PTK2B
Binding Specificity:	pTyr402
Reactivity:	Human
Host:	Rabbit
Clonality:	Polyclonal
Conjugate:	This PTK2B antibody is un-conjugated
Application:	Western Blotting (WB), ELISA, Immunohistochemistry (IHC), Immunofluorescence (IF)

Product Details

Immunogen:	Peptide sequence around phosphorylation site of tyrosine 402 (D-I-Y(p)-A-E) derived from Human Pyk2.
Isotype:	IgG
Cross-Reactivity:	Human, Mouse, Rat
Purification:	Antibodies were produced by immunizing rabbits with synthetic phosphopeptide and KLH conjugates. Antibodies were purified by affinity-chromatography using epitope-specific phosphopeptide. Non-phospho specific antibodies were removed by chromatography using

Target Details

Target:	PTK2B
Alternative Name:	PTK2B (PTK2B Products)

Target Details

Background:	<p>Background: Involved in calcium induced regulation of ion channel and activation of the map kinase signaling pathway. May represent an important signaling intermediate between neuropeptide activated receptors or neurotransmitters that increase calcium flux and the downstream signals that regulate neuronal activity. Interacts with the SH2 domain of Grb2. May phosphorylate the voltage-gated potassium channel protein Kv1.2. Its activation is highly correlated with the stimulation of c-Jun N-terminal kinase activity. Involved in osmotic stress-dependent SNCA 'Tyr-125' phosphorylation.</p> <p>Gluck SL, et al. (2004) J Clin Invest, 114(12): 1696-1699</p> <p>Benzing T, et al. (2001) Proc Natl Acad Sci U S A, 98(17): 9784-9789</p> <p>Tian D, et al. (2002) Mol Cell Biol, 22(8): 2650-2662</p> <p>Lu Z, et al. (2001) Mol Cell Biol, 21(12): 4016-4031</p> <p>Krishnan HH, et al. (2006) J Virol, 80(3): 1167-1180</p> <p>Aliases: CADTK antibody, CAK-beta antibody, CAKB antibody, CAKbeta antibody, Calcium regulated non receptor proline rich tyrosine kinase antibody, Calcium-dependent tyrosine kinase antibody, Cell adhesion kinase beta antibody, E430023005Rik antibody, EC 2.7.10.2 antibody, FADK 2 antibody, FADK2 antibody, FAK2 antibody, FAK2_HUMAN antibody, Focal adhesion kinase 2 antibody, MGC124628 antibody, PKB antibody, Proline-rich tyrosine kinase 2 antibody, Protein kinase B antibody, Protein Tyrosine Kinase 2 Beta antibody, Protein-tyrosine kinase 2-beta antibody, PTK antibody, PTK2B antibody, PTK2B protein tyrosine kinase 2 beta antibody, PYK2 antibody, RAFTK antibody, RAFTK2 antibody, Related adhesion focal tyrosine kinase antibody</p>
-------------	--

UniProt:	Q14289
----------	------------------------

Pathways:	EGFR Signaling Pathway , Regulation of Actin Filament Polymerization , Carbohydrate Homeostasis , Glycosaminoglycan Metabolic Process , Cellular Glucan Metabolic Process , Cell-Cell Junction Organization , Regulation of Cell Size , Regulation of Carbohydrate Metabolic Process , Hepatitis C , Protein targeting to Nucleus , CXCR4-mediated Signaling Events , Signaling Events mediated by VEGFR1 and VEGFR2 , Signaling of Hepatocyte Growth Factor Receptor , Positive Regulation of fat Cell Differentiation , VEGF Signaling
-----------	--

Application Details

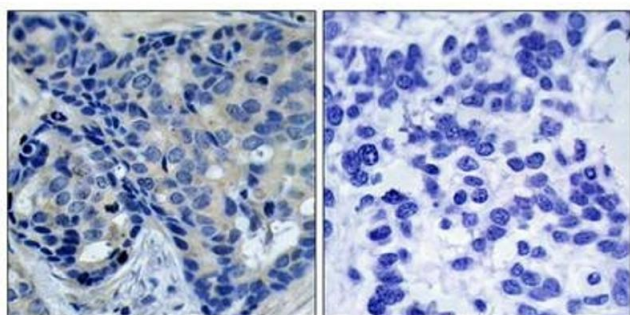
Application Notes:	WB:1:500-1:1000, IHC:1:50-1:100, IF:1:100-1:200,
--------------------	--

Restrictions:	For Research Use only
---------------	-----------------------

Handling

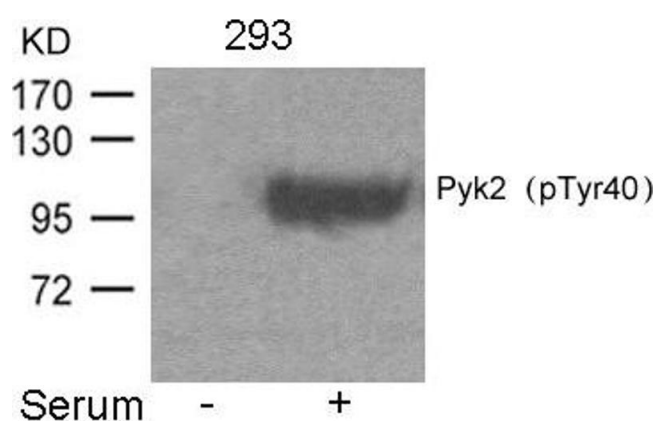
Format:	Liquid
Buffer:	Supplied at 1.0 mg/mL in phosphate buffered saline (without Mg ²⁺ and Ca ²⁺), pH 7.4, 150 mM NaCl, 0.02 % sodium azide and 50 % glycerol.
Preservative:	Sodium azide
Precaution of Use:	This product contains Sodium azide: a POISONOUS AND HAZARDOUS SUBSTANCE which should be handled by trained staff only.
Storage:	-20 °C,-80 °C
Storage Comment:	Upon receipt, store at -20°C or -80°C. Avoid repeated freeze.

Images



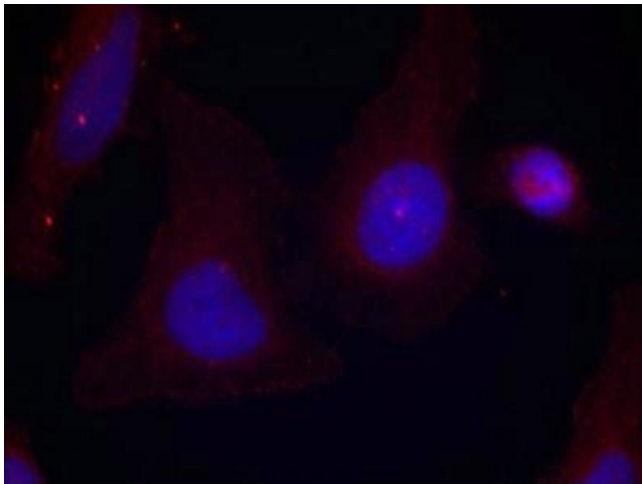
Immunohistochemistry

Image 1. Immunohistochemical analysis of paraffin-embedded human breast carcinoma tissue using Pyk2(Phospho-Tyr402) Antibody(left) or the same antibody preincubated with blocking peptide(right).



Western Blotting

Image 2. Western blot analysis of extracts from 293 cells untreated or treated with Serum using Pyk2(Phospho-Tyr402) Antibody.



Immunofluorescence

Image 3. Immunofluorescence staining of methanol-fixed HeLa cells using Pyk2(Phospho-Tyr402) Antibody.