



[Go to Product page](#)

Datasheet for ABIN7139000
anti-FER antibody (pTyr402)

1 Image

Overview

Quantity:	100 µL
Target:	FER
Binding Specificity:	pTyr402
Reactivity:	Human
Host:	Rabbit
Clonality:	Polyclonal
Conjugate:	This FER antibody is un-conjugated
Application:	Western Blotting (WB), ELISA, Immunohistochemistry (IHC)

Product Details

Immunogen:	Peptide sequence around phosphorylation site of tyrosine 402(V-N-Y(p)-E-E) derived from Human FER .
Isotype:	IgG
Cross-Reactivity:	Human, Mouse
Purification:	Antibodies were produced by immunizing rabbits with synthetic phosphopeptide and KLH conjugates. Antibodies were purified by affinity-chromatography using epitope-specific phosphopeptide. Non-phospho specific antibodies were removed by chromatography using

Target Details

Target:	FER
Alternative Name:	FER (FER Products)

Target Details

Background:

Background:

Fer protein is a member of the FPS/FES family of nontransmembrane receptor tyrosine kinases. It regulates cell-cell adhesion and mediates signaling from the cell surface to the cytoskeleton via growth factor receptors.

Hao Q.-L., Mol. Cell. Biol. 9:1587-1593(1989).

Lee S.-T., Oncogene 8:3403-3410(1993).

Krolewski J.J., Oncogene 5:277-282(1990).

Aliases: c FER antibody, Feline encephalitis virus related kinase FER antibody, Fer (fps/fes related) tyrosine kinase (phosphoprotein NCP94) antibody, Fer (fps/fes related) tyrosine kinase antibody, FER antibody, FER_HUMAN antibody, FerT antibody, Fujinami poultry sarcoma/Feline sarcoma related protein Fer antibody, p94 FER antibody, p94-FER antibody, Pe1Fe10 antibody, Pe1Fe13 antibody, Pe1Fe3 antibody, Pe1Fe6 antibody, Phosphoprotein NCP94 antibody, PPP1R74 antibody, Protein phosphatase 1 regulatory subunit 74 antibody, Proto oncogene tyrosine protein kinase FER antibody, Proto-oncogene c-Fer antibody, TYK3 antibody, Tyrosine kinase 3 antibody, Tyrosine-protein kinase Fer antibody

UniProt:

[P16591](#)

Application Details

Application Notes:

WB:1:500-1:1000, IHC:1:50-1:100,

Restrictions:

For Research Use only

Handling

Format:

Liquid

Buffer:

Rabbit IgG in phosphate buffered saline (without Mg²⁺ and Ca²⁺), pH 7.4, 150 mM NaCl, 0.02 % sodium azide and 50 % glycerol.

Preservative:

Sodium azide

Precaution of Use:

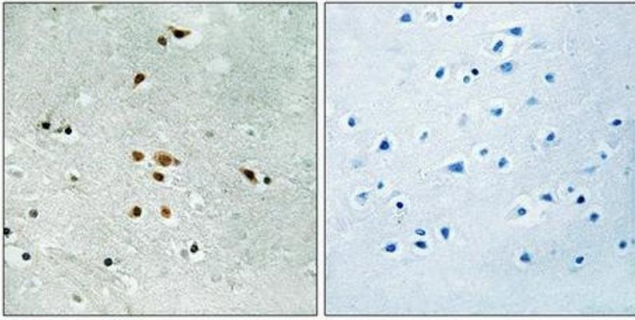
This product contains Sodium azide: a POISONOUS AND HAZARDOUS SUBSTANCE which should be handled by trained staff only.

Storage:

-20 °C,-80 °C

Storage Comment:

Upon receipt, store at -20°C or -80°C. Avoid repeated freeze.



Immunohistochemistry

Image 1. Immunohistochemical analysis of paraffin-embedded human brain tissue using FER (Phospho-Tyr402) antibody (left) or the same antibody preincubated with blocking peptide (right).