

Datasheet for ABIN7139004  
**anti-ITCH antibody (pTyr420)**[Go to Product page](#)

## 1 Image

## Overview

Quantity:	100 µL
Target:	ITCH
Binding Specificity:	pTyr420
Reactivity:	Human
Host:	Rabbit
Clonality:	Polyclonal
Conjugate:	This ITCH antibody is un-conjugated
Application:	ELISA, Immunohistochemistry (IHC)

## Product Details

Immunogen:	Peptide sequence around phosphorylation site of tyrosine 420(F-I-Y(p)-G-N) derived from Human ITCH .
Isotype:	IgG
Cross-Reactivity:	Human, Mouse
Purification:	Antibodies were produced by immunizing rabbits with synthetic phosphopeptide and KLH conjugates. Antibodies were purified by affinity-chromatography using epitope-specific phosphopeptide. Non-phospho specific antibodies were removed by chromatography using

## Target Details

Target:	ITCH
Alternative Name:	ITCH ( <a href="#">ITCH Products</a> )

## Target Details

### Background:

### Background:

Atrophin-1 contains a polyglutamine repeat, expansion of which is responsible for dentatorubral and pallidoluysian atrophy. The protein encoded by this gene interacts with atrophin-1. This encoded protein is a closely related member of the NEDD4-like protein family. This family of proteins are E3 ubiquitin-ligase molecules and regulate key trafficking decisions, including targeting of proteins to proteosomes or lysosomes. This encoded protein contains four tandem WW domains and a HECT (homologous to the E6-associated protein carboxyl terminus) domain.

Chen X., Genomics 73:238-241(2001).

Deloukas P., Nature 414:865-871(2001).

Wood J.D., Mol. Cell. Neurosci. 11:149-160(1998).

Aliases: ADMFD antibody, AIF4 antibody, AIP4 antibody, Atrophin 1 interacting protein 4 antibody, Atrophin-1-interacting protein 4 antibody, dJ468O1.1 antibody, dJ468O1.1 (atrophin 1 interacting protein 4 (AIP4)) antibody, dJ468O1.1 atrophin 1 interacting protein 4 AIP4 antibody, E3 ubiquitin protein ligase Itchy homolog antibody, E3 ubiquitin-protein ligase Itchy homolog antibody, EC 6.3.2 antibody, Itch antibody, ITCH\_HUMAN antibody, Itchy E3 ubiquitin protein ligase antibody, Itchy E3 ubiquitin protein ligase homolog antibody, Itchy E3 ubiquitin protein ligase homolog mouse antibody, Itchy E3 ubiquitin protein ligase, mouse, homolog of antibody, Itchy homolog E3 ubiquitin protein ligase antibody, Itchy mouse homolog E3 ubiquitin protein ligase antibody, NAPP1 antibody, NFE2 associated polypeptide 1 antibody, NFE2-associated polypeptide 1 antibody, Ubiquitin protein ligase ITCH antibody

### UniProt:

[Q96J02](#)

### Pathways:

[Activation of Innate immune Response](#), [CXCR4-mediated Signaling Events](#)

## Application Details

### Application Notes:

IHC:1:50-1:100,

### Restrictions:

For Research Use only

## Handling

### Format:

Liquid

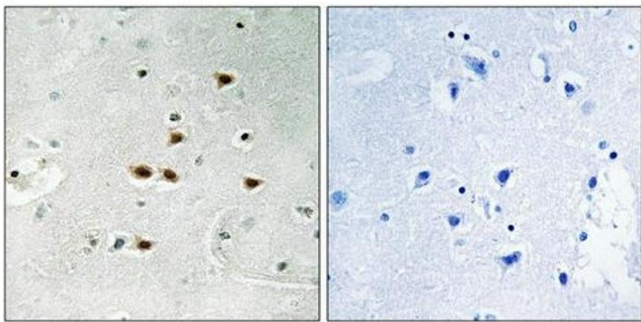
### Buffer:

Rabbit IgG in phosphate buffered saline (without Mg<sup>2+</sup> and Ca<sup>2+</sup>), pH 7.4, 150 mM NaCl, 0.02 % sodium azide and 50 % glycerol.

## Handling

Preservative:	Sodium azide
Precaution of Use:	This product contains Sodium azide: a POISONOUS AND HAZARDOUS SUBSTANCE which should be handled by trained staff only.
Storage:	-20 °C,-80 °C
Storage Comment:	Upon receipt, store at -20°C or -80°C. Avoid repeated freeze.

## Images



### Immunohistochemistry

**Image 1.** Immunohistochemical analysis of paraffin-embedded human brain tissue using ITCH (Phospho-Tyr420) antibody (left) or the same antibody preincubated with blocking peptide (right).