



Datasheet for ABIN7139009

anti-FGFR1/FGFR2 antibody (pTyr463, pTyr466)



[Go to Product page](#)

1 Image

Overview

Quantity:	100 µL
Target:	FGFR1/FGFR2
Binding Specificity:	pTyr463, pTyr466
Reactivity:	Human
Host:	Rabbit
Clonality:	Polyclonal
Conjugate:	This FGFR1/FGFR2 antibody is un-conjugated
Application:	Western Blotting (WB), ELISA

Product Details

Immunogen:	Peptide sequence around phosphorylation site of tyrosine 463/466(S-E-Y(p)-E-L) derived from Human FGFR1/2.
Isotype:	IgG
Cross-Reactivity:	Human, Mouse
Purification:	Antibodies were produced by immunizing rabbits with synthetic phosphopeptide and KLH conjugates. Antibodies were purified by affinity-chromatography using epitope-specific phosphopeptide. Non-phospho specific antibodies were removed by chromatography using

Target Details

Target:	FGFR1/FGFR2
Alternative Name:	FGFR1/FGFR2 (FGFR1/FGFR2 Products)

Target Details

Background:

Background:

The protein encoded by this gene is a member of the fibroblast growth factor receptor family, where amino acid sequence is highly conserved between members and throughout evolution. FGFR family members differ from one another in their ligand affinities and tissue distribution. A full-length representative protein consists of an extracellular region, composed of three immunoglobulin-like domains, a single hydrophobic membrane-spanning segment and a cytoplasmic tyrosine kinase domain. The extracellular portion of the protein interacts with fibroblast growth factors, setting in motion a cascade of downstream signals, ultimately influencing mitogenesis and differentiation.

Itoh N., Biochem. Biophys. Res. Commun. 169:680-685(1990).

Dionne C.A., EMBO J. 9:2685-2692(1990).

Johnson D.E., Mol. Cell. Biol. 10:4728-4736(1990).

Aliases: Basic fibroblast growth factor receptor 1 antibody, bFGF-R-1 antibody, BFGFR antibody, CD331 antibody, CEK antibody, FGFR antibody, FGFR 1 antibody, FGFR-1 antibody, FGFR1 antibody, FGFR1/PLAG1 fusion antibody, FGFR1_HUMAN antibody, fibroblast growth factor receptor 1 antibody, FLG antibody, FLT-2 antibody, FLT2 antibody, Fms-like gene antibody, Fms-like tyrosine kinase 2 antibody, fms-related tyrosine kinase 2 antibody, HBGFR antibody, heparin-binding growth factor receptor antibody, HH2 antibody, HRTFDS antibody, hydroxyaryl-protein kinase antibody, KAL2 antibody, N-SAM antibody, OGD antibody, Proto-oncogene c-Fgr antibody

UniProt:

[P11362](#)

Application Details

Application Notes:

WB:1:500-1:1000,

Restrictions:

For Research Use only

Handling

Format:

Liquid

Buffer:

Rabbit IgG in phosphate buffered saline (without Mg²⁺ and Ca²⁺), pH 7.4, 150 mM NaCl, 0.02 % sodium azide and 50 % glycerol.

Preservative:

Sodium azide

Precaution of Use:

This product contains Sodium azide: a POISONOUS AND HAZARDOUS SUBSTANCE which

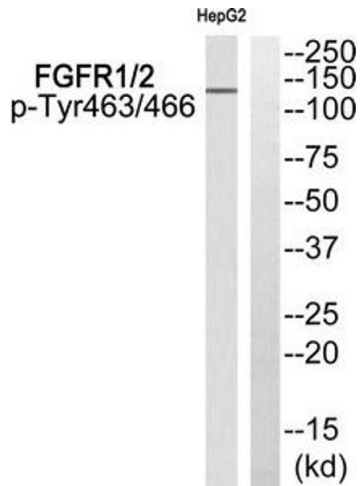
Handling

should be handled by trained staff only.

Storage: -20 °C,-80 °C

Storage Comment: Upon receipt, store at -20°C or -80°C. Avoid repeated freeze.

Images



Western Blotting

Image 1. Western blot analysis of extracts from HepG2 cells using FGFR1/2 (Phospho-Tyr463/466) Antibody. The lane on the right is treated with the antigen-specific peptide.