

Datasheet for ABIN7139016
anti-LCK antibody (pTyr505)



[Go to Product page](#)

2 Images

Overview

Quantity:	100 µL
Target:	LCK
Binding Specificity:	pTyr505
Reactivity:	Human
Host:	Rabbit
Clonality:	Polyclonal
Conjugate:	This LCK antibody is un-conjugated
Application:	Western Blotting (WB), ELISA

Product Details

Immunogen:	Peptide sequence around phosphorylation site of tyrosine 505 (G-Q-Y(p)-Q-P) derived from Human Lck.
Isotype:	IgG
Cross-Reactivity:	Human, Mouse
Purification:	Antibodies were produced by immunizing rabbits with synthetic phosphopeptide and KLH conjugates. Antibodies were purified by affinity-chromatography using epitope-specific phosphopeptide. Non-phospho specific antibodies were removed by chromatography using

Target Details

Target:	LCK
Alternative Name:	LCK (LCK Products)

Target Details

Background: Tyrosine kinase that plays an essential role for the selection and maturation of developing T-cell in the thymus and in mature T-cell function. Is constitutively associated with the cytoplasmic portions of the CD4 and CD8 surface receptors and plays a key role in T-cell antigen receptor(TCR)-linked signal transduction pathways. Association of the TCR with a peptide antigen-bound MHC complex facilitates the interaction of CD4 and CD8 with MHC class II and class I molecules, respectively, and thereby recruits the associated LCK to the vicinity of the TCR/CD3 complex. LCK then phosphorylates tyrosines residues within the immunoreceptor tyrosines-based activation motifs (ITAMs) in the cytoplasmic tails of the TCRgamma chains and CD3 subunits, initiating the TCR/CD3 signaling pathway. In addition, contributes to signaling by other receptor molecules. Associates directly with the cytoplasmic tail of CD2, and upon engagement of the CD2 Molecule, LCK undergoes hyperphosphorylation and activation. Also plays a role in the IL2 receptor-linked signaling pathway that controls T-cell proliferative response. Binding of IL2 to its receptor results in increased activity of LCK. Is expressed at all stages of thymocyte development and is required for the regulation of maturation events that are governed by both pre-TCR and mature a beta TCR.

Heck E, et al. (2006) J Virol. Oct, 80(20): 9934-9942

Michie AM, et al. (2000) Mol Biol Cell. May, 11(5): 1585-1595

Aliases: IMD22 antibody, LCK antibody, Lck p56 antibody, LCK proto-oncogene, Src family tyrosine kinase antibody, LCK_HUMAN antibody, Leukocyte C-terminal Src kinase antibody, LSK antibody, Lymphocyte cell specific protein tyrosine kinase antibody, Lymphocyte cell-specific protein-tyrosine kinase antibody, Lymphocyte specific protein tyrosine kinase antibody, Membrane associated protein tyrosine kinase antibody, Oncogene lck antibody, P56 LCK antibody, p56(LSTRA) protein tyrosine kinase antibody, p56-LCK antibody, p56lck antibody, pp58 lck antibody, pp58lck antibody, Protein YT16 antibody, Proto oncogene tyrosine protein kinase LCK antibody, Proto-oncogene Lck antibody, Protooncogene tyrosine protein kinase LCK antibody, T cell specific protein tyrosine kinase antibody, T cell-specific protein-tyrosine kinase antibody, T lymphocyte specific protein tyrosine kinase p56lck antibody, Tyrosine-protein kinase Lck antibody, YT 16 antibody, YT16 antibody

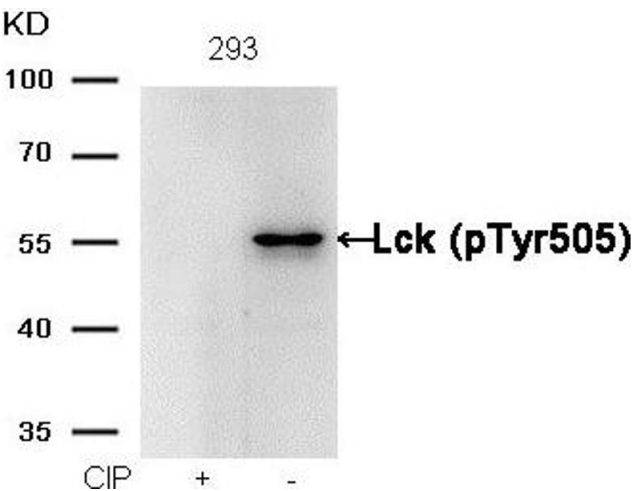
UniProt: [P06239](#)

Pathways: [TCR Signaling](#), [Fc-epsilon Receptor Signaling Pathway](#), [EGFR Signaling Pathway](#), [Neurotrophin Signaling Pathway](#), [Transition Metal Ion Homeostasis](#), [Positive Regulation of Endopeptidase Activity](#), [CXCR4-mediated Signaling Events](#), [Thromboxane A2 Receptor Signaling](#)

Application Details

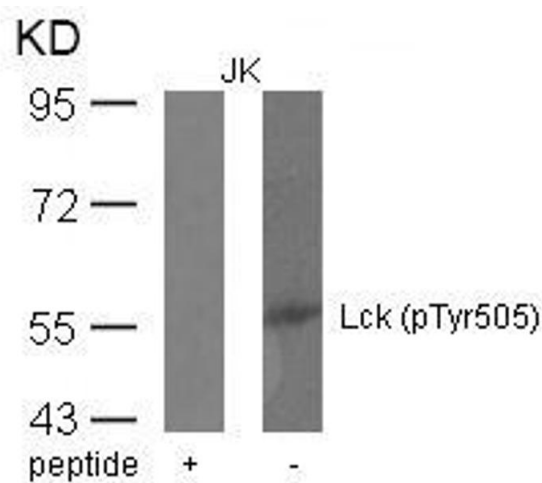
Application Notes:	WB:1:500-1:1000,
Restrictions:	For Research Use only
Handling	
Format:	Liquid
Buffer:	Supplied at 1.0 mg/mL in phosphate buffered saline (without Mg2+ and Ca2+), pH 7.4, 150 mM NaCl, 0.02 % sodium azide and 50 % glycerol.
Preservative:	Sodium azide
Precaution of Use:	This product contains Sodium azide: a POISONOUS AND HAZARDOUS SUBSTANCE which should be handled by trained staff only.
Storage:	-20 °C,-80 °C
Storage Comment:	Upon receipt, store at -20°C or -80°C. Avoid repeated freeze.

Images



Western Blotting

Image 1. Western blot analysis of extracts from 293 cells, treated with calf intestinal phosphatase (CIP), using Lck (phospho-Tyr505) Antibody.



Western Blotting

Image 2. Western blot analysis of extracts from JK cells using Lck(phospho-Tyr505) Antibody and the same antibody preincubated with blocking peptide.