

Datasheet for ABIN7139023
anti-SHP1 antibody (pTyr536)[Go to Product page](#)

2 Images

Overview

Quantity:	100 µL
Target:	SHP1 (PTPN6)
Binding Specificity:	pTyr536
Reactivity:	Human
Host:	Rabbit
Clonality:	Polyclonal
Conjugate:	This SHP1 antibody is un-conjugated
Application:	ELISA, Immunohistochemistry (IHC), Immunofluorescence (IF)

Product Details

Immunogen:	Peptide sequence around phosphorylation site of tyrosine 536 (S-E-Y(p)-G-N) derived from Human SHP-1.
Isotype:	IgG
Cross-Reactivity:	Human, Mouse, Rat
Purification:	Antibodies were produced by immunizing rabbits with synthetic phosphopeptide and KLH conjugates. Antibodies were purified by affinity-chromatography using epitope-specific phosphopeptide. Non-phospho specific antibodies were removed by chromatography using

Target Details

Target:	SHP1 (PTPN6)
Alternative Name:	PTPN6 (PTPN6 Products)

Target Details

Background:	<p>Background: Acts downstream of various receptor and cytoplasmic protein tyrosine kinases to participate in the signal transduction from the cell surface to the nucleus.</p> <p>Migone TS, et al. (1998) Proc Natl Acad Sci USA, 95(7): 3845-3850.</p> <p>Timms JF, et al. (1998) Mol Cell Biol, 18(7): 3838-3850.</p> <p>Kanagasundaram V, et al. (1999) Mol Cell Biol, 19(6): 4079-4092.</p> <p>Hauck CR, et al. (1999) Infect Immun, 67(10): 5490-5494.</p> <p>Aliases: 70Z-SHP antibody, EC 3.1.3.48 antibody, HCP antibody, HCPH antibody, Hematopoietic cell phosphatase antibody, Hematopoietic cell protein tyrosine phosphatase antibody, Hematopoietic cell protein-tyrosine phosphatase antibody, HPTP1C antibody, Protein tyrosine phosphatase 1C antibody, Protein tyrosine phosphatase non receptor type 6 antibody, Protein tyrosine phosphatase SHP1 antibody, Protein-tyrosine phosphatase 1C antibody, protein-tyrosine phosphatase SHP 1 antibody, Protein-tyrosine phosphatase SHP-1 antibody, PTN6_HUMAN antibody, PTP 1C antibody, PTP-1C antibody, PTP1C antibody, Ptpn6 antibody, SH PTP 1 antibody, SH PTP1 antibody, SH-PTP1 antibody, SHP 1 antibody, SHP 1L antibody, SHP1 antibody, SHP1L antibody, tyrosine protein phosphatase non receptor type 6 antibody, Tyrosine-protein phosphatase non-receptor type 6 antibody</p>
UniProt:	P29350
Pathways:	JAK-STAT Signaling , TCR Signaling , TLR Signaling , Nuclear Receptor Transcription Pathway , Positive Regulation of Peptide Hormone Secretion , Steroid Hormone Mediated Signaling Pathway , Response to Growth Hormone Stimulus , Regulation of Leukocyte Mediated Immunity , CXCR4-mediated Signaling Events , Signaling Events mediated by VEGFR1 and VEGFR2 , BCR Signaling

Application Details

Application Notes:	IHC:1:50-1:100, IF:1:100-1:200,
Restrictions:	For Research Use only
Handling	
Format:	Liquid
Buffer:	Supplied at 1.0 mg/mL in phosphate buffered saline (without Mg ²⁺ and Ca ²⁺), pH 7.4, 150 mM NaCl, 0.02 % sodium azide and 50 % glycerol.
Preservative:	Sodium azide

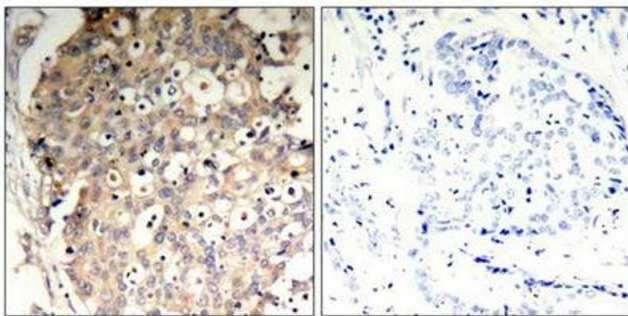
Handling

Precaution of Use: This product contains Sodium azide: a POISONOUS AND HAZARDOUS SUBSTANCE which should be handled by trained staff only.

Storage: -20 °C, -80 °C

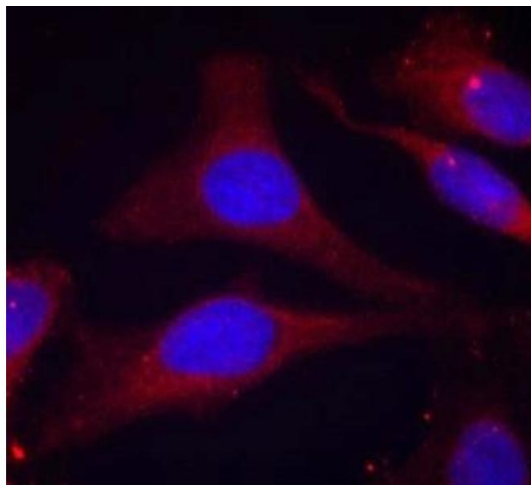
Storage Comment: Upon receipt, store at -20°C or -80°C. Avoid repeated freeze.

Images



Immunohistochemistry

Image 1. Immunohistochemical analysis of paraffin-embedded human breast carcinoma tissue using SHP-1(Phospho-Tyr536) Antibody(left) or the same antibody preincubated with blocking peptide(right).



Immunofluorescence

Image 2. Immunofluorescence staining of methanol-fixed HeLa cells using SHP-1(Phospho-Tyr536) Antibody.