

Datasheet for ABIN7139026

## anti-CSF1R antibody (pTyr561)



[Go to Product page](#)

### 2 Images

#### Overview

Quantity:	100 µL
Target:	CSF1R
Binding Specificity:	pTyr561
Reactivity:	Human
Host:	Rabbit
Clonality:	Polyclonal
Conjugate:	This CSF1R antibody is un-conjugated
Application:	Western Blotting (WB), ELISA, Immunohistochemistry (IHC)

#### Product Details

Immunogen:	Peptide sequence around phosphorylation site of tyrosine 561 (N-S-Y(p)-T-F) derived from Human CSFR .
Isotype:	IgG
Cross-Reactivity:	Human, Mouse
Purification:	Antibodies were produced by immunizing rabbits with synthetic phosphopeptide and KLH conjugates. Antibodies were purified by affinity-chromatography using epitope-specific phosphopeptide. Non-phospho specific antibodies were removed by chromatography using

#### Target Details

Target:	CSF1R
Alternative Name:	CSF1R ( <a href="#">CSF1R Products</a> )

## Target Details

Background:	<p>Background:</p> <p>Tyrosine-protein kinase that acts as cell-surface receptor for CSF1 and IL34 and plays an essential role in the regulation of survival, proliferation and differentiation of hematopoietic precursor cells, especially mononuclear phagocytes, such as macrophages and monocytes. Promotes the release of proinflammatory chemokines in response to IL34 and CSF1, and thereby plays an important role in innate immunity and in inflammatory processes. Plays an important role in the regulation of osteoclast proliferation and differentiation, the regulation of bone resorption, and is required for normal bone and tooth development.</p> <p>Hampe A., Oncogene Res. 4:9-17(1989).</p> <p>Andre C., Genomics 39:216-226(1997).</p> <p>Liu T., J. Proteome Res. 4:2070-2080(2005).</p> <p>Aliases: C FMS antibody, CD 115 antibody, CD115 antibody, CD115 antigen antibody, CFMS antibody, Colony stimulating factor 1 receptor antibody, Colony stimulating factor I receptor antibody, CSF 1 R antibody, CSF 1R antibody, CSF-1 receptor antibody, CSF-1-R antibody, CSF1 R antibody, CSF1R antibody, CSF1R_HUMAN antibody, CSFR antibody, EC 2.7.10.1 antibody, FIM 2 antibody, FIM2 antibody, FMS antibody, FMS proto oncogene antibody, FMS protooncogene antibody, HDLS antibody, M-CSF Receptor antibody, M-CSF-R antibody, Macrophage colony stimulating factor 1 receptor antibody, Macrophage colony stimulating factor I receptor antibody, Macrophage colony-stimulating factor 1 receptor antibody, McDonough feline sarcoma viral (v fms) oncogene homolog antibody, MCSFR antibody, Oncogen FMS antibody, Proto-oncogene c-Fms antibody, V-FMS McDonough feline sarcoma viral oncogen homolog, formerly antibody</p>
-------------	--

UniProt:	<a href="#">P07333</a>
Pathways:	<a href="#">RTK Signaling</a> , <a href="#">Inositol Metabolic Process</a> , <a href="#">Cell-Cell Junction Organization</a>

## Application Details

Application Notes:	WB:1:500-1:1000, IHC:1:50-1:100,
Restrictions:	For Research Use only

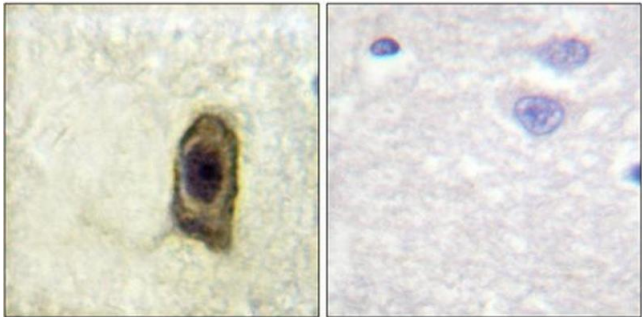
## Handling

Format:	Liquid
Buffer:	Rabbit IgG in phosphate buffered saline (without Mg2+ and Ca2+), pH 7.4, 150 mM NaCl,

Handling

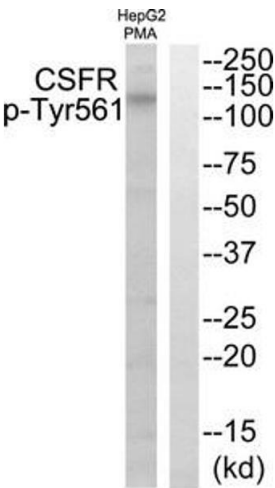
	0.02 % sodium azide and 50 % glycerol.
Preservative:	Sodium azide
Precaution of Use:	This product contains Sodium azide: a POISONOUS AND HAZARDOUS SUBSTANCE which should be handled by trained staff only.
Storage:	-20 °C,-80 °C
Storage Comment:	Upon receipt, store at -20°C or -80°C. Avoid repeated freeze.

Images



Immunohistochemistry

**Image 1.** Immunohistochemical analysis of paraffin-embedded human brain, using CSFR (Phospho-Tyr561) antibody (left) or the same antibody preincubated with blocking peptide (right).



Western Blotting

**Image 2.** Western blot analysis of extracts from HepG2 cells treated with PMA using CSFR (Phospho-Tyr561) Antibody. The lane on the right is treated with the antigen-specific peptide.