



[Go to Product page](#)

Datasheet for ABIN7139033

anti-EPH Receptor A4 antibody (pTyr596)

1 Image

Overview

Quantity:	100 µL
Target:	EPH Receptor A4 (EPHA4)
Binding Specificity:	pTyr596
Reactivity:	Human
Host:	Rabbit
Clonality:	Polyclonal
Conjugate:	This EPH Receptor A4 antibody is un-conjugated
Application:	Western Blotting (WB), ELISA

Product Details

Immunogen:	Peptide sequence around phosphorylation site of tyrosine 596 (R-T-Y(p)-V-D) derived from Human EPHA4 .
Isotype:	IgG
Cross-Reactivity:	Human, Mouse
Purification:	Antibodies were produced by immunizing rabbits with synthetic phosphopeptide and KLH conjugates. Antibodies were purified by affinity-chromatography using epitope-specific phosphopeptide. Non-phospho specific antibodies were removed by chromatography using

Target Details

Target:	EPH Receptor A4 (EPHA4)
Alternative Name:	EPHA4 (EPHA4 Products)

Target Details

Background:

Background:

Receptor tyrosine kinase which binds membrane-bound ephrin family ligands residing on adjacent cells, leading to contact-dependent bidirectional signaling into neighboring cells. The signaling pathway downstream of the receptor is referred to as forward signaling while the signaling pathway downstream of the ephrin ligand is referred to as reverse signaling. Highly promiscuous, it has the unique property among Eph receptors to bind and to be physiologically activated by both GPI-anchored ephrin-A and transmembrane ephrin-B ligands including EFNA1 and EFN3. Upon activation by ephrin ligands, modulates cell morphology and integrin-dependent cell adhesion through regulation of the Rac, Rap and Rho GTPases activity.

Rikova K., Cell 131:1190-1203(2007) [PubMed: 18083107].

Richter M., J. Neurosci. 27:14205-14215(2007) [PubMed: 18094260].

Fu W.Y., Nat. Neurosci. 10:67-76(2007) [PubMed: 17143272].

Aliases: Cek 8 antibody, CEK8 antibody, EK8 antibody, eph receptor a4 antibody, EPH-like kinase 8 antibody, EPHA4 antibody, EPHA4_HUMAN antibody, Ephrin type-A receptor 4 antibody, HEK 8 antibody, hEK8 antibody, Receptor protein-tyrosine kinase HEK8 antibody, Sek 1 antibody, SEK antibody, TYRO 1 protein tyrosine kinase antibody, TYRO1 antibody, Tyrosine-protein kinase receptor SEK antibody, Tyrosine-protein kinase TYRO1 antibody

UniProt:

[P54764](#)

Pathways:

[RTK Signaling](#)

Application Details

Application Notes:

WB:1:500-1:1000,

Restrictions:

For Research Use only

Handling

Format:

Liquid

Buffer:

Rabbit IgG in phosphate buffered saline (without Mg²⁺ and Ca²⁺), pH 7.4, 150 mM NaCl, 0.02 % sodium azide and 50 % glycerol.

Preservative:

Sodium azide

Precaution of Use:

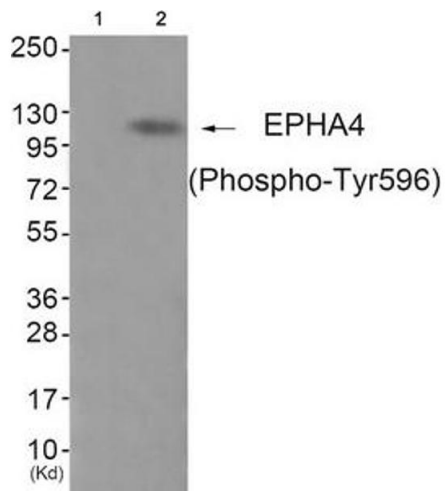
This product contains Sodium azide: a POISONOUS AND HAZARDOUS SUBSTANCE which should be handled by trained staff only.

Handling

Storage: -20 °C,-80 °C

Storage Comment: Upon receipt, store at -20°C or -80°C. Avoid repeated freeze.

Images



Western Blotting

Image 1. Western blot analysis of extracts from JK cells (Lane 2), using EPHA4 (Phospho-Tyr596) Antibody. The lane on the left is treated with antigen-specific peptide.