

Datasheet for ABIN7139039
anti-GAB2 antibody (pTyr643)[Go to Product page](#)

2 Images

Overview

Quantity:	100 µL
Target:	GAB2
Binding Specificity:	pTyr643
Reactivity:	Human
Host:	Rabbit
Clonality:	Polyclonal
Conjugate:	This GAB2 antibody is un-conjugated
Application:	Western Blotting (WB), ELISA, Immunohistochemistry (IHC)

Product Details

Immunogen:	Peptide sequence around phosphorylation site of tyrosine 643(V-D-Y(p)-V-Q) derived from Human Gab2 .
Isotype:	IgG
Cross-Reactivity:	Human, Mouse, Rat
Purification:	Antibodies were produced by immunizing rabbits with synthetic phosphopeptide and KLH conjugates. Antibodies were purified by affinity-chromatography using epitope-specific phosphopeptide. Non-phospho specific antibodies were removed by chromatography using

Target Details

Target:	GAB2
Alternative Name:	GAB2 (GAB2 Products)

Target Details

Background:	<p>Background:</p> <p>This gene is a member of the GRB2-associated binding protein (GAB) gene family and is similar to the GAB1 gene. These proteins contain pleckstrin homology (PH) domain, and bind SHP2 tyrosine phosphatase and GRB2 adapter protein. They act as adapters for transmitting various signals in response to stimuli through cytokine and growth factor receptors, and T- and B-cell antigen receptors. The protein encoded by this gene is the principal activator of phosphatidylinositol-3 kinase in response to activation of the high affinity IgE receptor. Two alternatively spliced transcripts encoding different isoforms have been described for this gene.</p> <p>Nishida K., Blood 93:1809-1816(1999).</p> <p>Nagase T., DNA Res. 5:31-39(1998).</p> <p>Salomon A.R., Proc. Natl. Acad. Sci. U.S.A. 100:443-448(2003).</p> <p>Aliases: GAB 2 antibody, Gab2 antibody, GAB2_HUMAN antibody, Grb 2 associated binder 2 antibody, GRB 2 associated binding protein 2 antibody, Grb2 associated binder 2 antibody, GRB2 associated binder 2 pp100 antibody, GRB2 associated binding protein 2 antibody, GRB2-associated binder 2 antibody, GRB2-associated-binding protein 2 antibody, Growth factor receptor bound protein 2 associated protein 2 antibody, Growth factor receptor bound protein 2-associated protein 2 antibody, KIAA0571 antibody, p97 antibody, PH domain containing adaptor molecule p97 antibody, pp100 antibody</p>
-------------	--

UniProt:	Q9UQC2
Pathways:	TCR Signaling , Fc-epsilon Receptor Signaling Pathway , Regulation of Leukocyte Mediated Immunity , Positive Regulation of Immune Effector Process , BCR Signaling , Warburg Effect

Application Details

Application Notes:	WB:1:500-1:1000, IHC:1:50-1:100,
Restrictions:	For Research Use only

Handling

Format:	Liquid
Buffer:	Rabbit IgG in phosphate buffered saline (without Mg ²⁺ and Ca ²⁺), pH 7.4, 150 mM NaCl, 0.02 % sodium azide and 50 % glycerol.
Preservative:	Sodium azide
Precaution of Use:	This product contains Sodium azide: a POISONOUS AND HAZARDOUS SUBSTANCE which

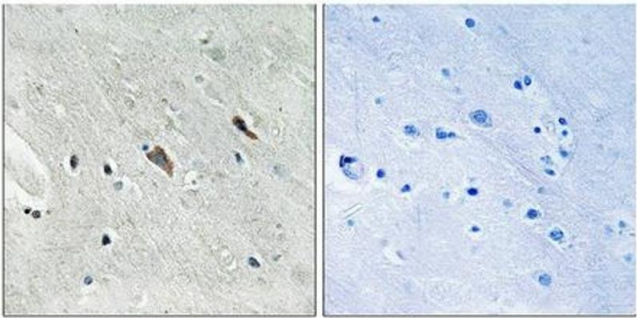
Handling

should be handled by trained staff only.

Storage: -20 °C,-80 °C

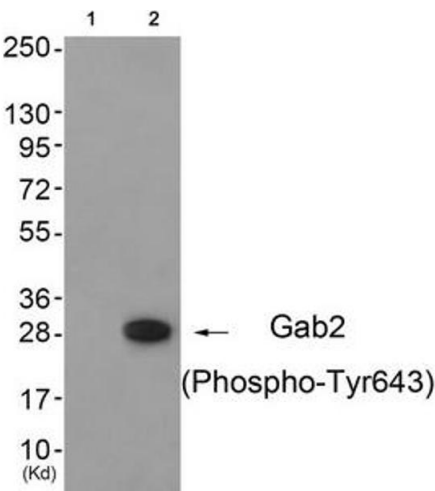
Storage Comment: Upon receipt, store at -20°C or -80°C. Avoid repeated freeze.

Images



Immunohistochemistry

Image 1. Immunohistochemical analysis of paraffin-embedded human brain tissue using Gab2 (Phospho-Tyr643) antibody (left) or the same antibody preincubated with blocking peptide (right).



Western Blotting

Image 2. Western blot analysis of extracts from 3T3 cells (Lane 2), using Gab2 (Phospho-Tyr643) Antibody. The lane on the left is treated with antigen-specific peptide.