

Datasheet for ABIN7139042

anti-EPB41 antibody (pTyr418, pTyr660)[Go to Product page](#)**1** Image

Overview

Quantity:	100 µL
Target:	EPB41
Binding Specificity:	pTyr418, pTyr660
Reactivity:	Human
Host:	Rabbit
Clonality:	Polyclonal
Conjugate:	This EPB41 antibody is un-conjugated
Application:	Western Blotting (WB), ELISA

Product Details

Immunogen:	Peptide sequence around phosphorylation site of tyrosine 660/418 (N-I-Y(p)-I-R) derived from Human EPB41.
Isotype:	IgG
Cross-Reactivity:	Human, Mouse
Purification:	Antibodies were produced by immunizing rabbits with synthetic phosphopeptide and KLH conjugates. Antibodies were purified by affinity-chromatography using epitope-specific phosphopeptide. Non-phospho specific antibodies were removed by chromatography using

Target Details

Target:	EPB41
Alternative Name:	EPB41 (EPB41 Products)

Target Details

Background:	<p>Background:</p> <p>Elliptocytosis is a hematologic disorder characterized by elliptically shaped erythrocytes and a variable degree of hemolytic anemia. Inherited as an autosomal dominant, elliptocytosis results from mutation in any one of several genes encoding proteins of the red cell membrane skeleton. The form discussed here is the one found in the 1950s to be linked to Rh blood group and more recently shown to be caused by a defect in protein 4.1. 'Rh-unlinked' forms of elliptocytosis are caused by mutation in the alpha-spectrin gene, the beta-spectrin gene, or the band 3 gene.</p> <p>Conboy J.G., Proc. Natl. Acad. Sci. U.S.A. 83:9512-9516(1986).</p> <p>Tang T.K., Adv. Exp. Med. Biol. 241:81-95(1988).</p> <p>Tang T.K., Proc. Natl. Acad. Sci. U.S.A. 85:3713-3717(1988).</p> <p>Aliases: 4.1R antibody, 41_HUMAN antibody, Band 4.1 antibody, E41P antibody, EL 1 antibody, EL1 antibody, EL1 gene antibody, Elliptocytosis 1 antibody, Elliptocytosis 1 RH linked antibody, EPB 4.1 antibody, EPB 41 antibody, EPB4.1 antibody, Epb41 antibody, Erythrocyte membrane protein band 4.1 (elliptocytosis 1 RH linked) antibody, Erythrocyte membrane protein band 4.1 antibody, Erythrocyte surface protein band 4.1 antibody, HE antibody, P4.1 antibody, Protein 4.1 antibody, Protein 4.1, red blood cell type antibody</p>
-------------	--

UniProt: [P11171](#)

Application Details

Application Notes:	WB:1:500-1:1000,
Restrictions:	For Research Use only

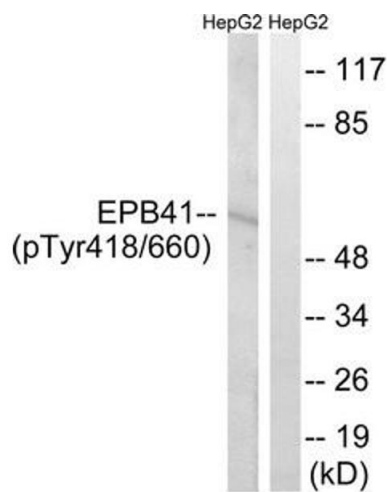
Handling

Format:	Liquid
Buffer:	Rabbit IgG in phosphate buffered saline (without Mg ²⁺ and Ca ²⁺), pH 7.4, 150 mM NaCl, 0.02 % sodium azide and 50 % glycerol.
Preservative:	Sodium azide
Precaution of Use:	This product contains Sodium azide: a POISONOUS AND HAZARDOUS SUBSTANCE which should be handled by trained staff only.
Storage:	-20 °C,-80 °C

Handling

Storage Comment: Upon receipt, store at -20°C or -80°C. Avoid repeated freeze.

Images



Western Blotting

Image 1. Western blot analysis of extracts from HepG2 cells treated with PMA using EPB41 (Phospho-Tyr660/418) Antibody. The lane on the right is treated with the antigen-specific peptide.