



[Go to Product page](#)

Datasheet for ABIN713906
anti-MAD2L1 antibody (AA 131-205)

2 Images

Overview

Quantity:	100 µL
Target:	MAD2L1
Binding Specificity:	AA 131-205
Reactivity:	Human
Host:	Rabbit
Clonality:	Polyclonal
Conjugate:	This MAD2L1 antibody is un-conjugated
Application:	ELISA, Immunohistochemistry (Paraffin-embedded Sections) (IHC (p)), Immunofluorescence (Cultured Cells) (IF (cc)), Immunofluorescence (Paraffin-embedded Sections) (IF (p)), Immunohistochemistry (Frozen Sections) (IHC (fro))

Product Details

Immunogen:	KLH conjugated synthetic peptide derived from human Mad2L1
Isotype:	IgG
Predicted Reactivity:	Human,Mouse,Rat,Cow,Pig,Horse,Chicken,Rabbit
Purification:	Purified by Protein A.

Target Details

Target:	MAD2L1
Alternative Name:	Mad2l1 (MAD2L1 Products)

Target Details

Background: Mad2L1 is required for the execution of the mitotic checkpoint which monitors the process of kinetochore spindle attachment and delays the onset of anaphase when this process is not complete. It inhibits the activity of the anaphase promoting complex by sequestering CDC20 until all chromosomes are aligned at the metaphase plate.

Subcellular location: Cytoplasm, Nucleus

Synonyms: HsMAD 2, MAD 2, MAD 2A, MAD2 like 1, MAD2 like protein 1, MAD2 mitotic arrest deficient like 1, Mitotic arrest deficient yeast homolog like 1, MD2L1_HUMAN.

Gene ID: 4085

Application Details

Application Notes: ELISA 1:500-1000
IHC-P 1:200-400
IHC-F 1:100-500
IF(IHC-P) 1:50-200
IF(IHC-F) 1:50-200
IF(ICC) 1:50-200

Restrictions: For Research Use only

Handling

Format: Liquid

Concentration: 1 µg/µL

Buffer: 0.01M TBS(pH 7.4) with 1 % BSA, 0.03 % Proclin300 and 50 % Glycerol.

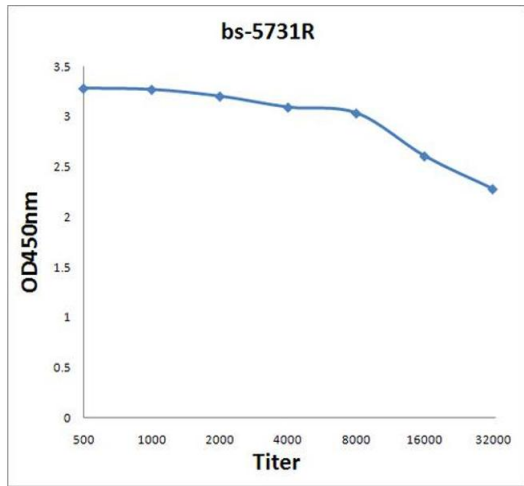
Preservative: ProClin

Precaution of Use: This product contains ProClin: a POISONOUS AND HAZARDOUS SUBSTANCE, which should be handled by trained staff only.

Storage: -20 °C

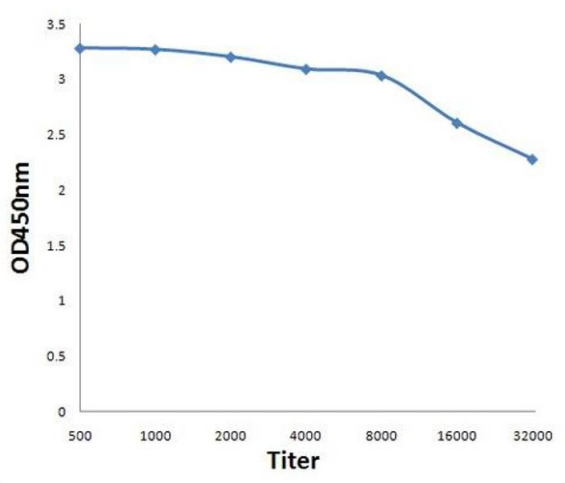
Storage Comment: Store at -20°C for one year. Avoid repeated freeze/thaw cycles.

Expiry Date: 12 months



ELISA

Image 1. Antigen: 2 µg/100 µL Primary: Antiserum, 1:500, 1:1000, 1:2000, 1:4000, 1:8000, 1:16000, 1:32000; Secondary: HRP conjugated Rabbit Anti-Goat IgG at 1: 5000; TMB staining Read the data in Microplate Reader by 450nm.



ELISA

Image 2. Antigen: 0.2ug/100ul, Primary: Antiserum, 1:500, 1:1000, 1:2000, 1:4000, 1:8000, 1:16000, 1:32000, Secondary: HRP conjugated Goat-Anti-Rabbit IgG at 1: 5000, TMB staining, Read the data in MicroplateReader by 450nm